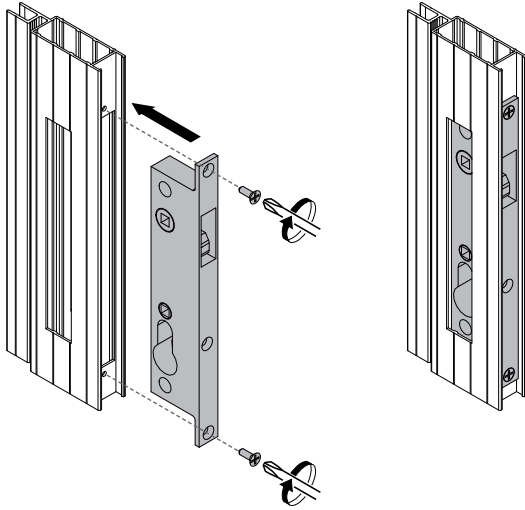


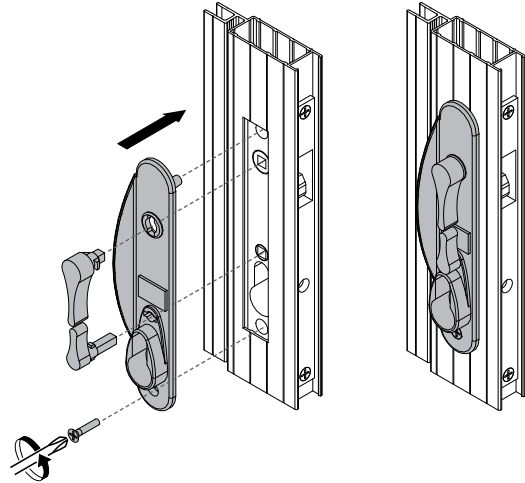
Instructions

Barrier Door Lock Installation

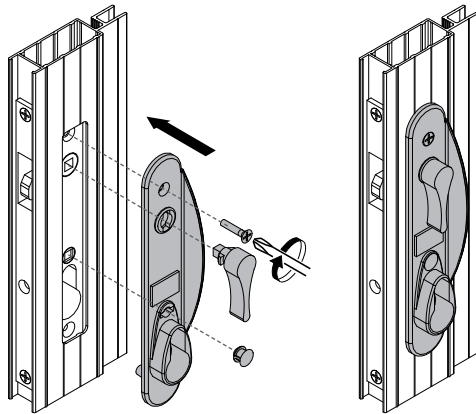
- 1** With lock body in unlocked position, insert into cutout. Secure with two 12mm countersunk self tapping screws supplied



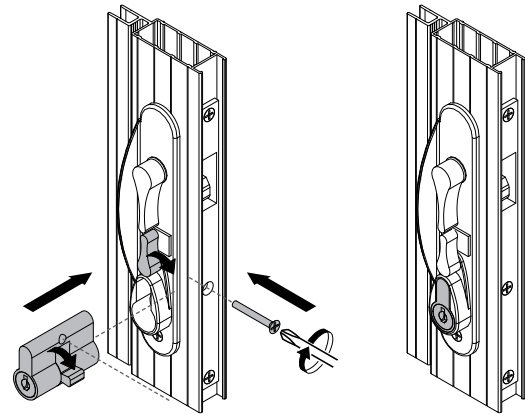
- 2** Select "handle" that will be used internally, fit operating and snib levers, ensuring correct orientation.



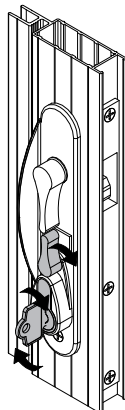
- 3** Fit plastic snib plug to external handle. Fit "handles" to lock ensuring the snib lever is in an upright position. Secure but do not tighten with two 18mm countersunk thread forming screws provided.



- 4** To allow fitment of lock cylinder, lock the mechanism using the snib lever. Position the cylinder in the lock body so the cam turns towards the front end of the door. Secure with 32mm countersunk metal thread screw supplied.



- 5** Operate lock by unlocking with key first and then by using snib. Ensure free operation. Secure all screws. Do not over tighten handle securing screws.



- 6** Ensure lock body is in an unlocked position. Position latch striker into lock body.

Partially close the door and mark position of the striker.

Remove striker from lock body. Drill two 3mm dia holes and fit to door jamb where marked using 12mm countersunk screws supplied.

