

Sliding Window - Features & Benefits

FRAME

- Robust 102mm semi commercial aluminium window frame - ideal for larger window applications.

SASH

- 55mm sash stile slides effortlessly on heavy duty double bogey rollers.
- Head, sill and jamb rails all have flat infill for clean lines.
- Sashes can be reversed*.
- Operating sashes can easily be removable for cleaning and maintenance.
- Sash punched holes are fitted with infill caps.

**Only on two lite configurations; Striker holes in jamb will be visible.*

SILL

- Modern sill design with built-in sump sill and no insect traps for easy maintenance and cleaning.
- Sill track includes a rigid infill - helping eliminate paint wear in the track.

GLAZING & ENERGY EFFICIENCY

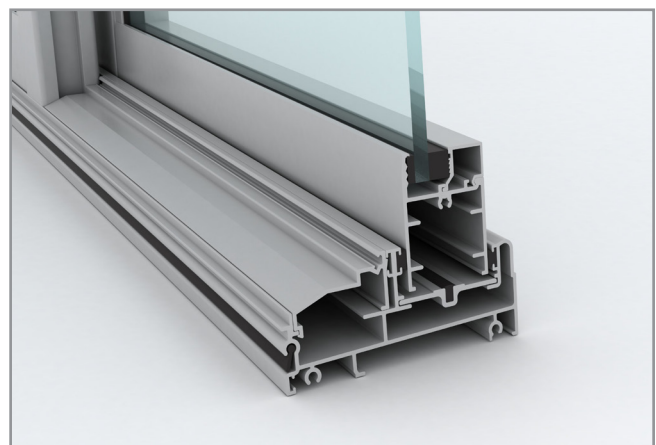
- All Trend® Windows and Doors comply with Australian Standards AS1288.
- Glazing options from 4mm single glazed to 24mm insulated glazed units (IGUs) .
- Energy efficiency options available to help reduce home energy consumption.
- All glazing options are Window Energy Rating Scheme (WERS) rated - providing a wide range of energy efficient solutions.

ACOUSTICS

- Acoustic solutions available for improved noise reduction
- High R_w ratings available

WIND & WATER RATINGS

- All Trend® Windows and Doors are designed to meet and surpass 700Pa wind velocity rating and 150Pa water penetration rating and comply with Australian Standards AS2047.
- Pascal deflection rates up to 2200Pa.
- Sliding window rated at an air infiltration of $0.84L/s\ m^2$ (below the the National Construction Code (NCC) for Air conditioned spaces of $1.00L/s\ m^2$) perfect for both air conditioned and non-air conditioned spaces.





Sliding Window - Features & Benefits

SECURITY

- Sliding windows come standard with patented and architecturally designed Quantum® key lock.
- 100mm child-safe window opening restrictor is available.
- Optional concealed intergrated vent-lock available - allowing secure partial opening for ventilation.
- Optional **Prowler Proof** security screens available.

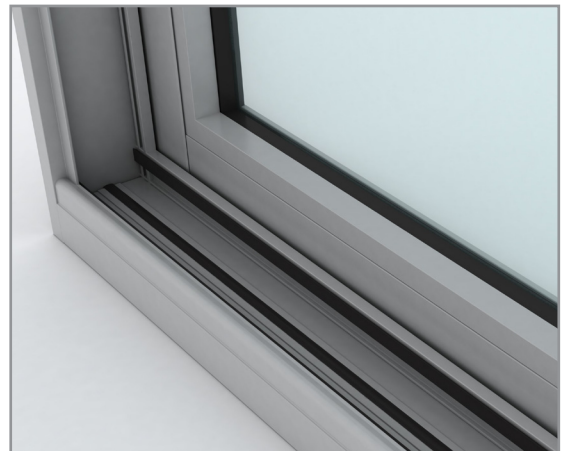
BUSHFIRE

- Xtreme® Bushfire Protection option available.
- Xtreme® options have been tested by CSIRO to meet BAL-40 - compliant to AS1530.8.1 within Australian Standards AS3959-2009.



HARDWARE

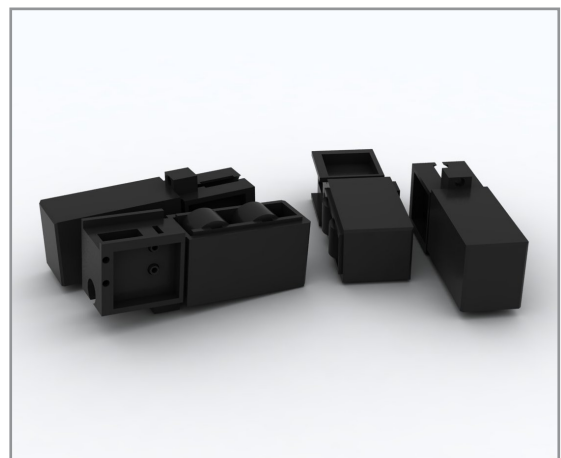
- **Infinity** Satin Chrome hardware with key lock comes standard on sliding windows.
- Optional colours are available:
 - Pearl White
 - Stone Beige
 - Anodic Natural Matt
 - Gloss Black
- Heavy duty dual roller system
- Window locks can be keyed alike to other Quantum® products for ease of use.



OPTIONS

- Glazing options also available in bar layout styles:
 - Colonial
 - Federation
 - Ovolo glazing bar style*
- Wide range of powder coated colours.
- Easy to fit and remove flyscreens available.
- Customised WERS ratings.
- Variety of sizes and custom made options available (including bay window styles).
- Variety of configuration options available.

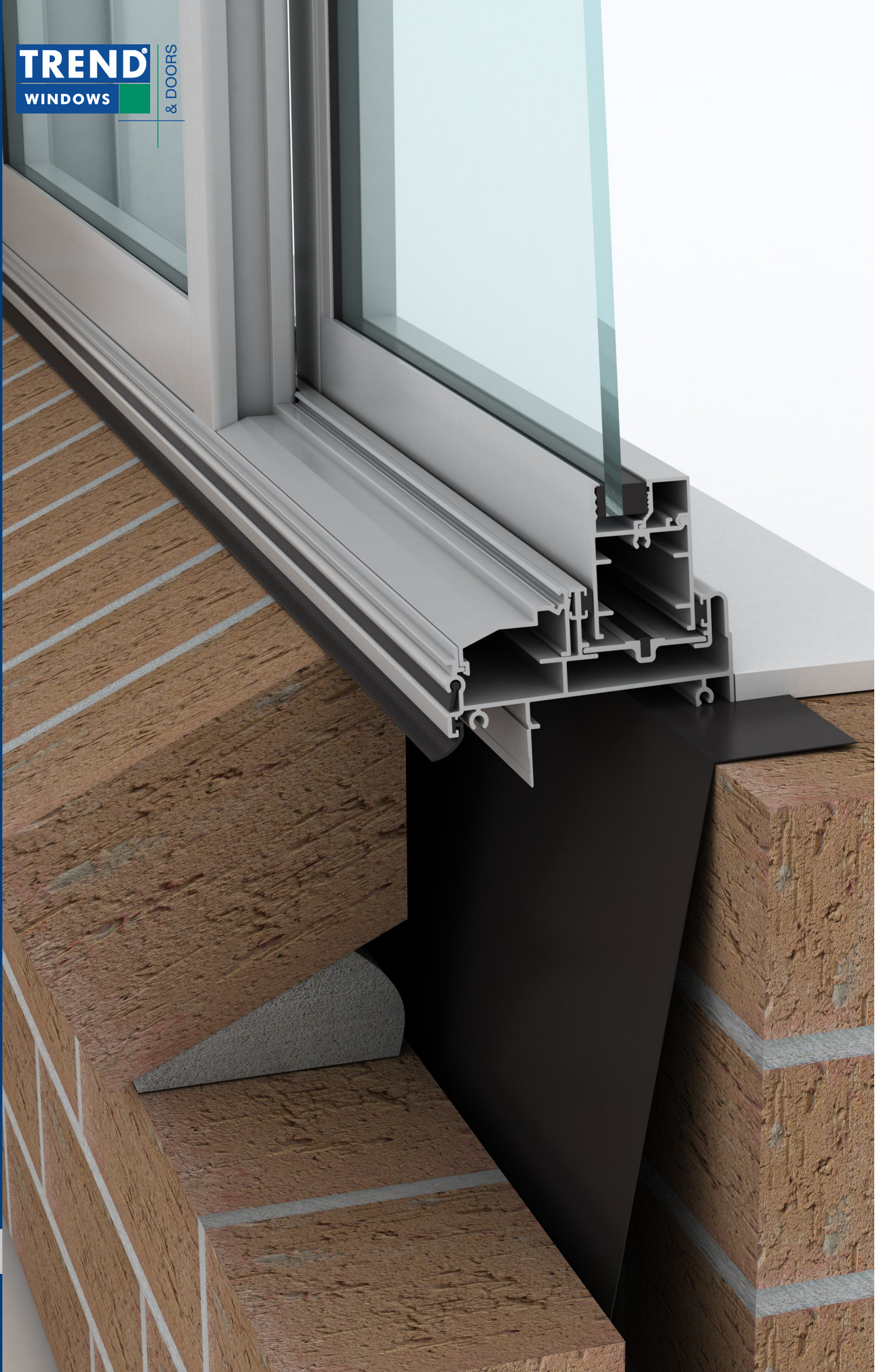
**Ovolo only available in single glazing.*



DELIVERY

- Protective wrapping for delivery to site comes standard for all Quantum® products.

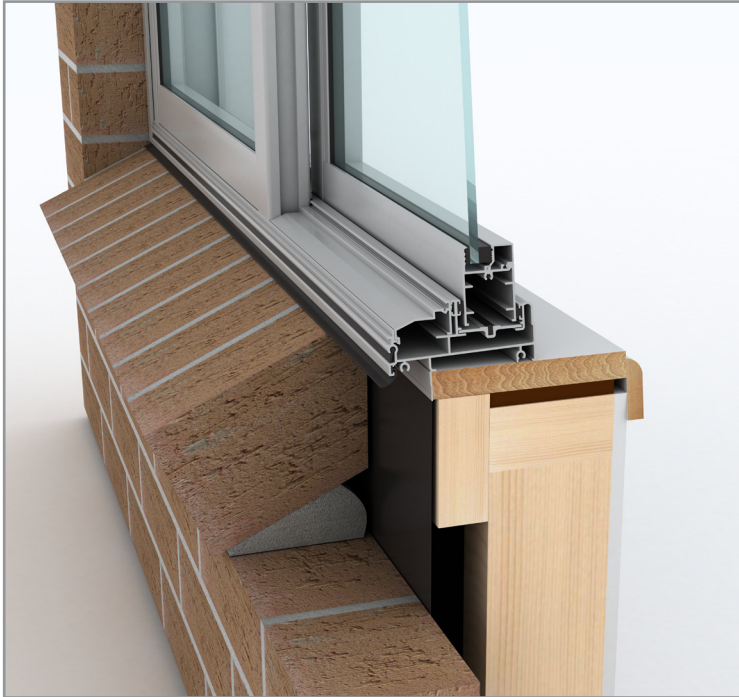
Please note that drawings displayed are not to scale



Quantum® Sliding Window Installation

Sliding Window - Installation

Building In Detail | Brick Veneer - 240mm wall



INSTALLING FRAME CORRECTLY

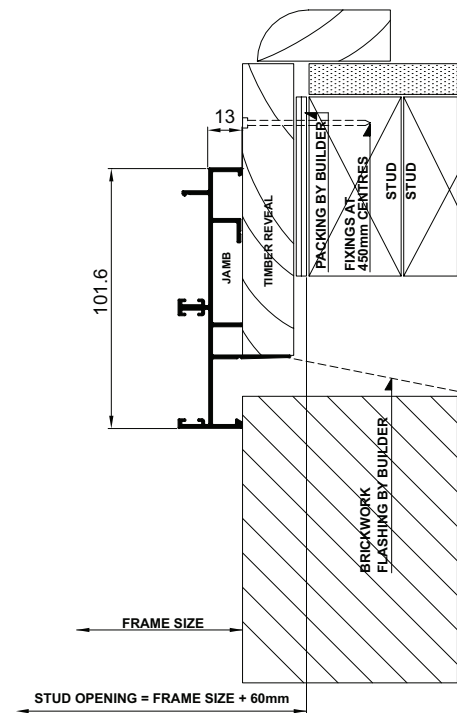
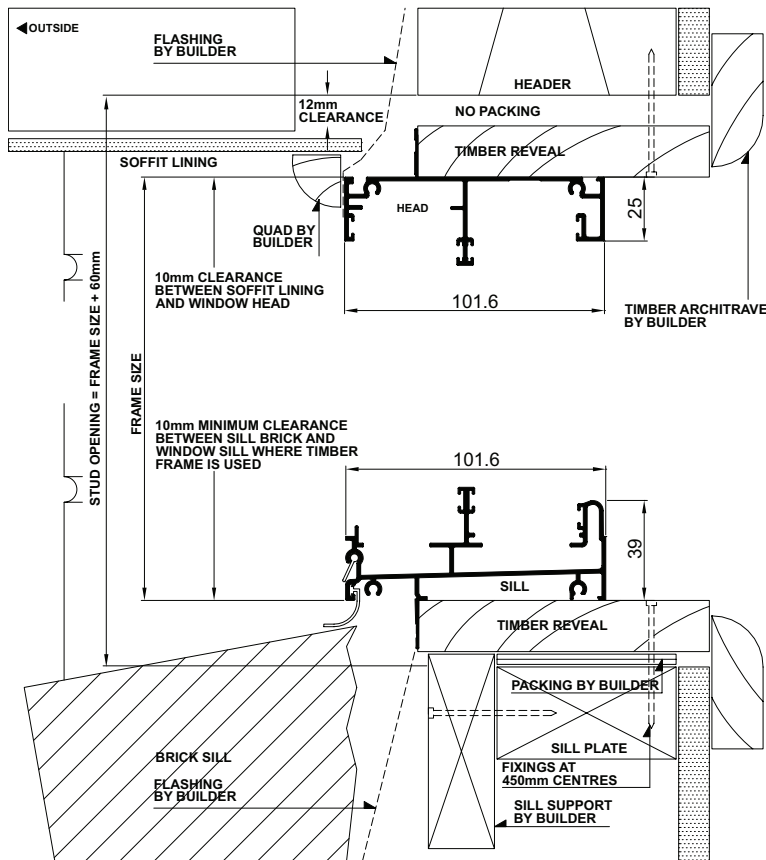
- Fit flashing to window surround (refer to drawing below).
- Measure the frame opening to ensure that there is sufficient room for the product and additional packing.

Stud Opening:

Height = Frame Size + 60mm

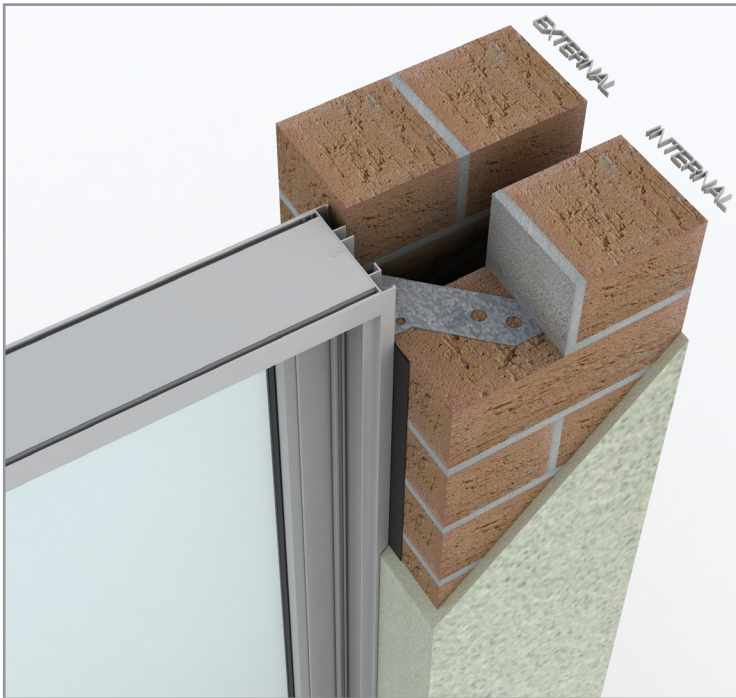
Width = Frame Size + 60mm

- Secure aluminum windows by nailing through reveal into studwork - fixing at 450mm maximum centres.
- Sill bricks should be at least 10mm clear of window frame to allow settlement in brick veneer construction.
- Header beam should be at least 12mm clear of window frame.
- Do not permit weight of eaves or arch bars to bear on any window or door frame. **(Windows and doors are not load bearing.)**
- To ensure the satisfactory long term performance of window, install sill support (refer to drawings below).



Sliding Window - Installation

Building In Detail | **Double Brick - 280mm wall**



INSTALLING FRAME CORRECTLY

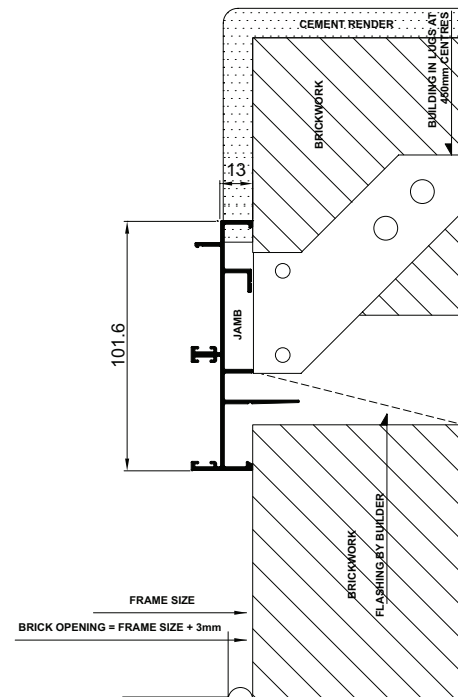
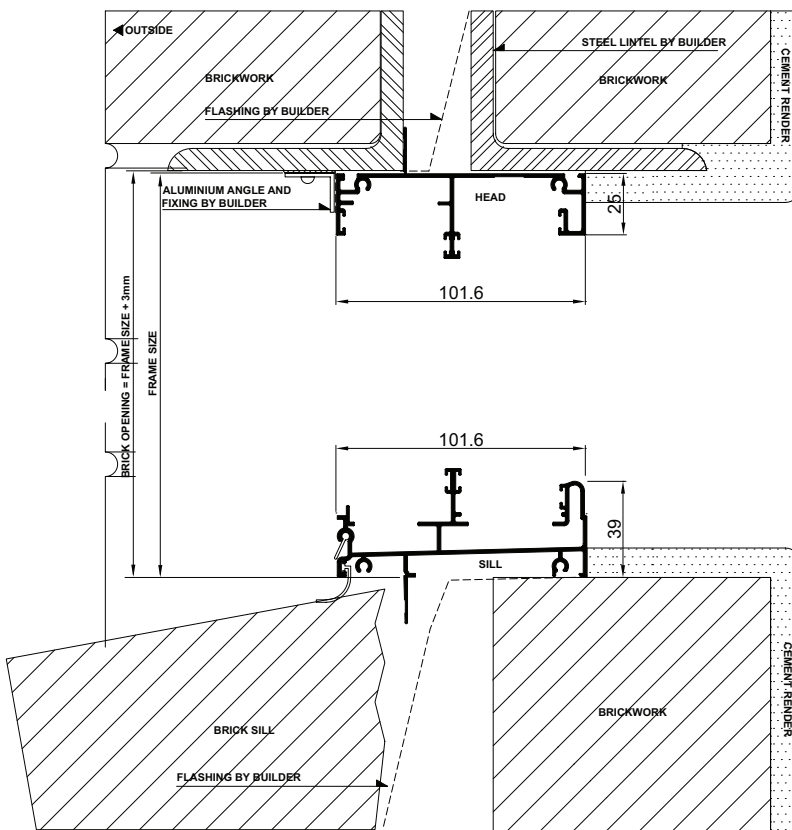
- Fit flashing to window surround (refer to drawing below).
- Measure the frame opening to ensure that there is sufficient room for the product and additional packing.

Brick Opening:

Height = Frame Size + 3mm

Width = Frame Size + 3mm

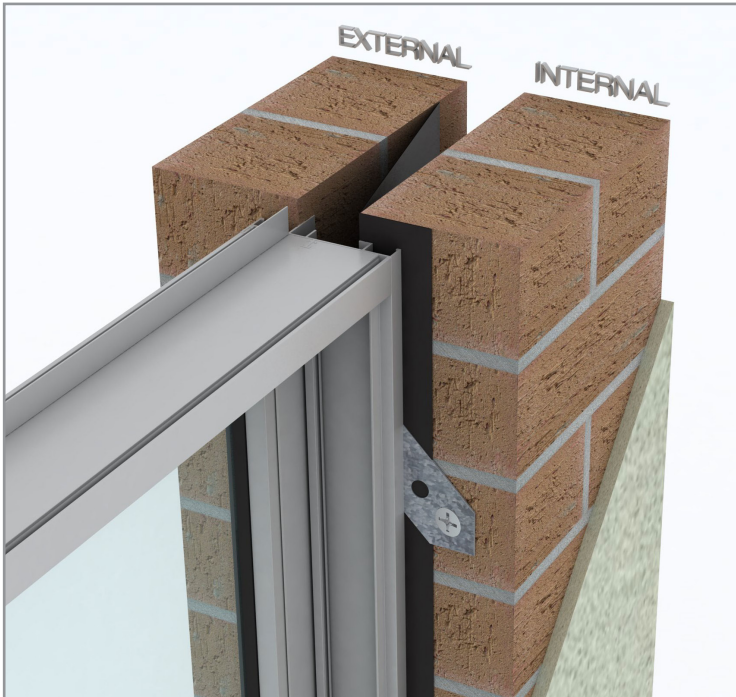
- Secure aluminum windows by using building lug - fixing at 450mm maximum centres.
- Sill bricks should be at least 10mm clear of window frame to allow settlement in brick veneer construction.
- Do not permit weight of eaves or arch bars to bear on any window or door frame. **(Windows and doors are not load bearing.)**



Please note that drawings displayed are not to scale

Sliding Window - Installation

Building In Detail | Double Brick - 280mm wall | Prepared Opening



INSTALLING FRAME CORRECTLY

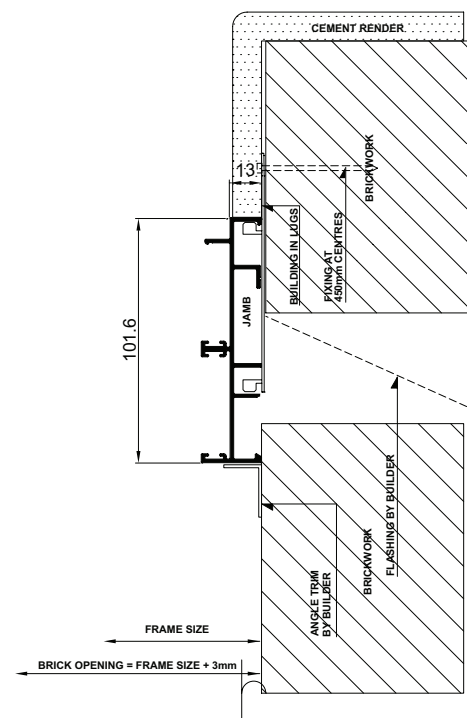
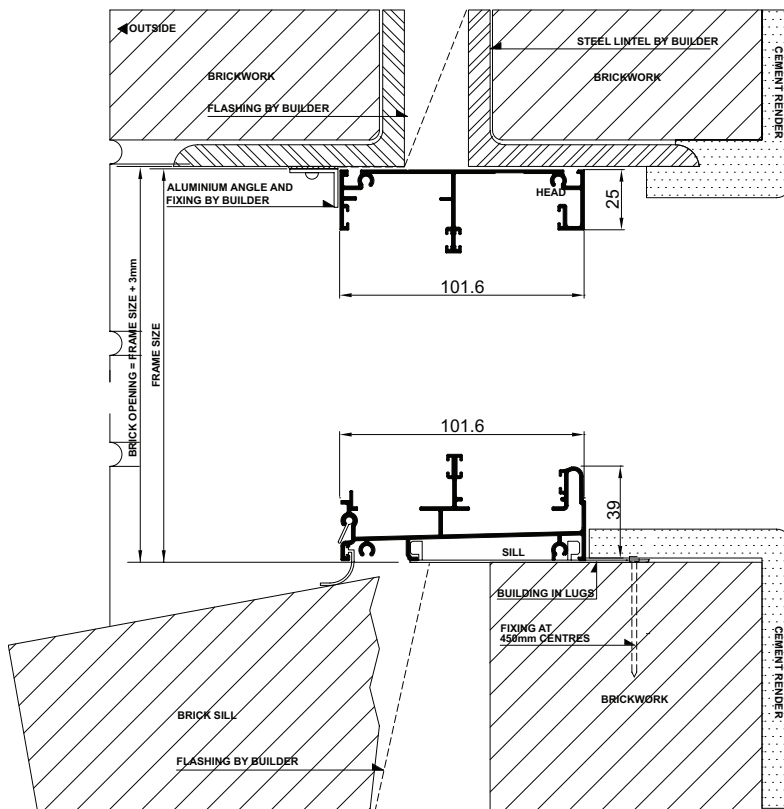
- Fit flashing to window surround (refer to drawing below).
- Measure the frame opening to ensure that there is sufficient room for the product and additional packing.

Brick Opening:

Height = Frame Size + 3mm

Width = Frame Size + 3mm

- Secure aluminum windows by using building lug - fixing at 450mm maximum centres.
- Sill bricks should be at least 10mm clear of window frame to allow settlement in brick veneer construction.
- Do not permit weight of eaves or arch bars to bear on any window or door frame. **(Windows and doors are not load bearing.)**





INSTALLING FRAME CORRECTLY

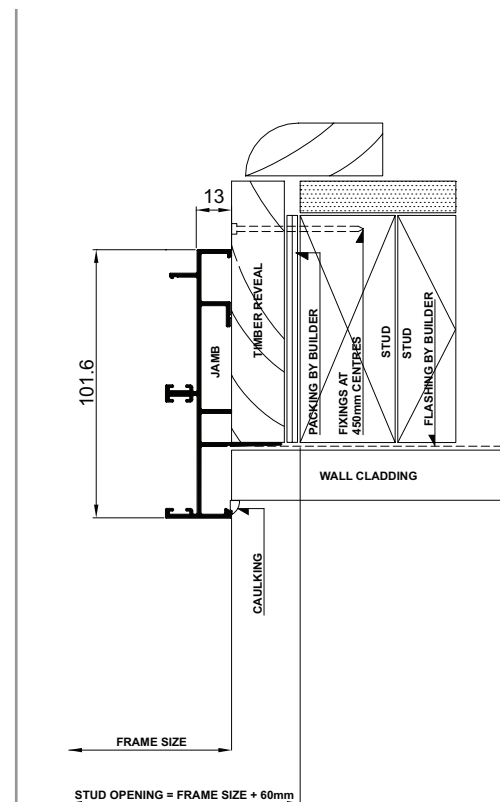
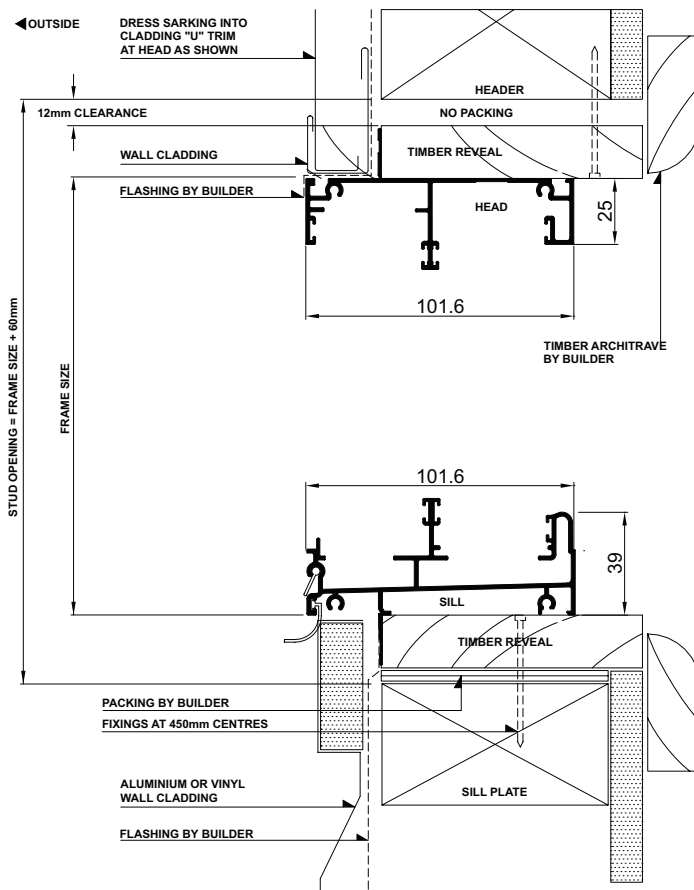
- Fit flashing to window surround (refer to drawing below).
- Measure the frame opening to ensure that there is sufficient room for the product and additional packing.

Stud Opening:

Height = Frame Size + 60mm

Width = Frame Size + 60mm

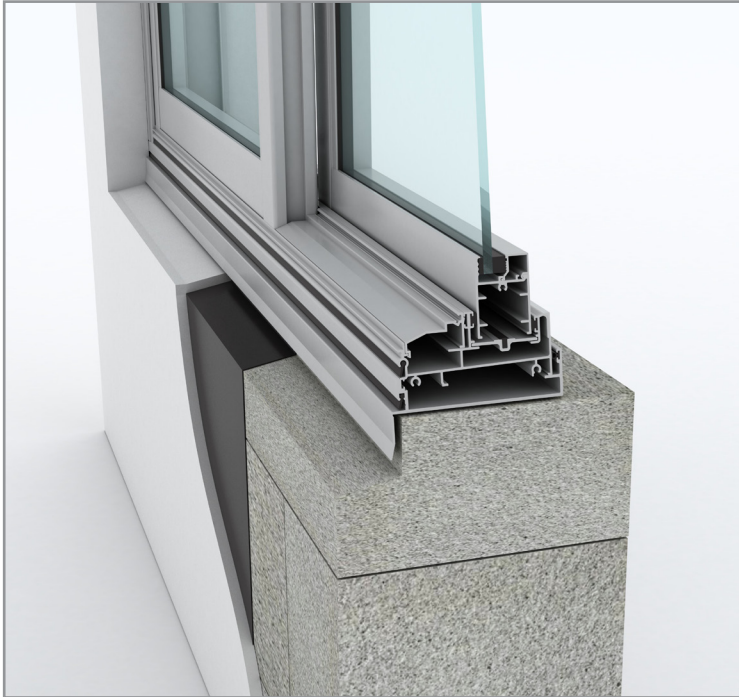
- Secure aluminum windows by nailing through reveal into studwork - fixing at 450mm maximum centres.
- Header beam should be at least 12mm clear of window frame.
- Do not permit weight of eaves or arch bars to bear on any window or door frame. **(Windows and doors are not load bearing.)**
- To ensure the satisfactory long term performance of windows, install sill support (refer to drawings below).



Please note that drawings displayed are not to scale

Sliding Window - Installation

Building In Detail | **Blockwork**



INSTALLING FRAME CORRECTLY

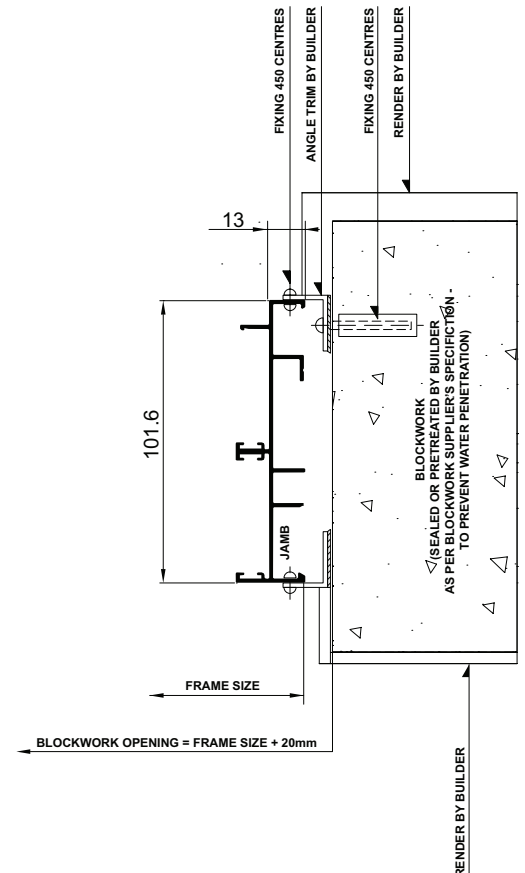
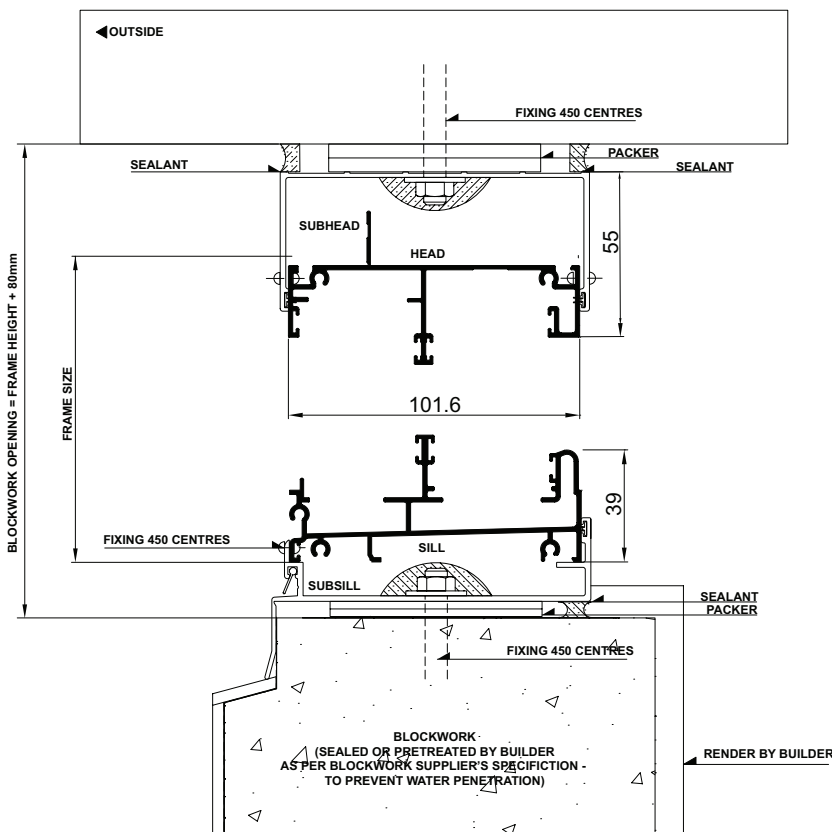
- Measure the frame opening to ensure that there is sufficient room for the product and additional packing.

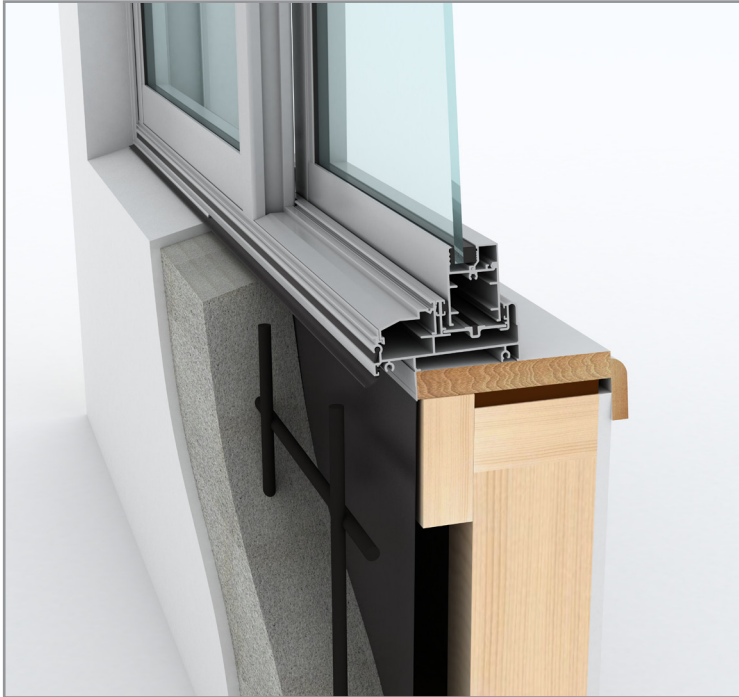
Blockwork Opening:

Height = Frame Size + 80mm

Width = Frame Size + 20mm

- Fit subframe to opening and seal fixings.
- Seal ends of subsill with angle.
- Fit window to subframe (screw or pop-rivet).
- Do not permit weight of eaves or arch bars to bear on any window or door frame. **(Windows and doors are not load bearing.)**





INSTALLING FRAME CORRECTLY

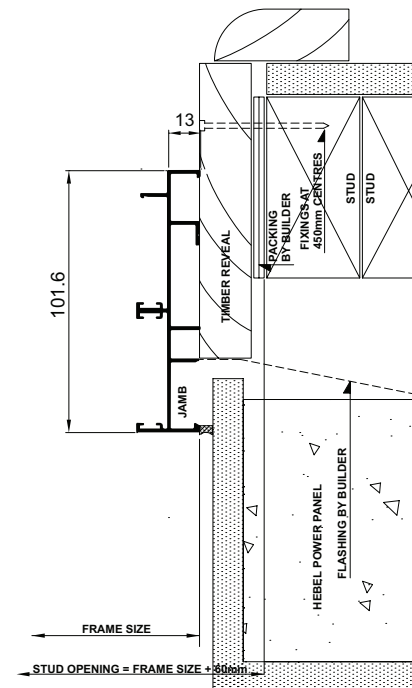
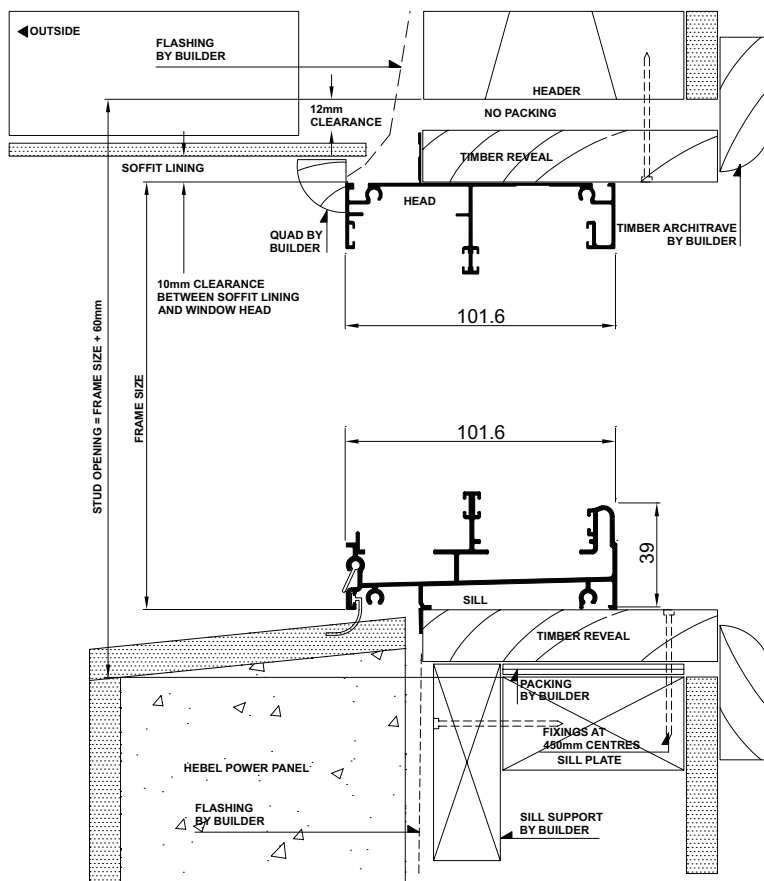
- Fit flashing to window surround (refer to drawing below).
- Measure the frame opening to ensure that there is sufficient room for the product and additional packing.

Stud Opening:

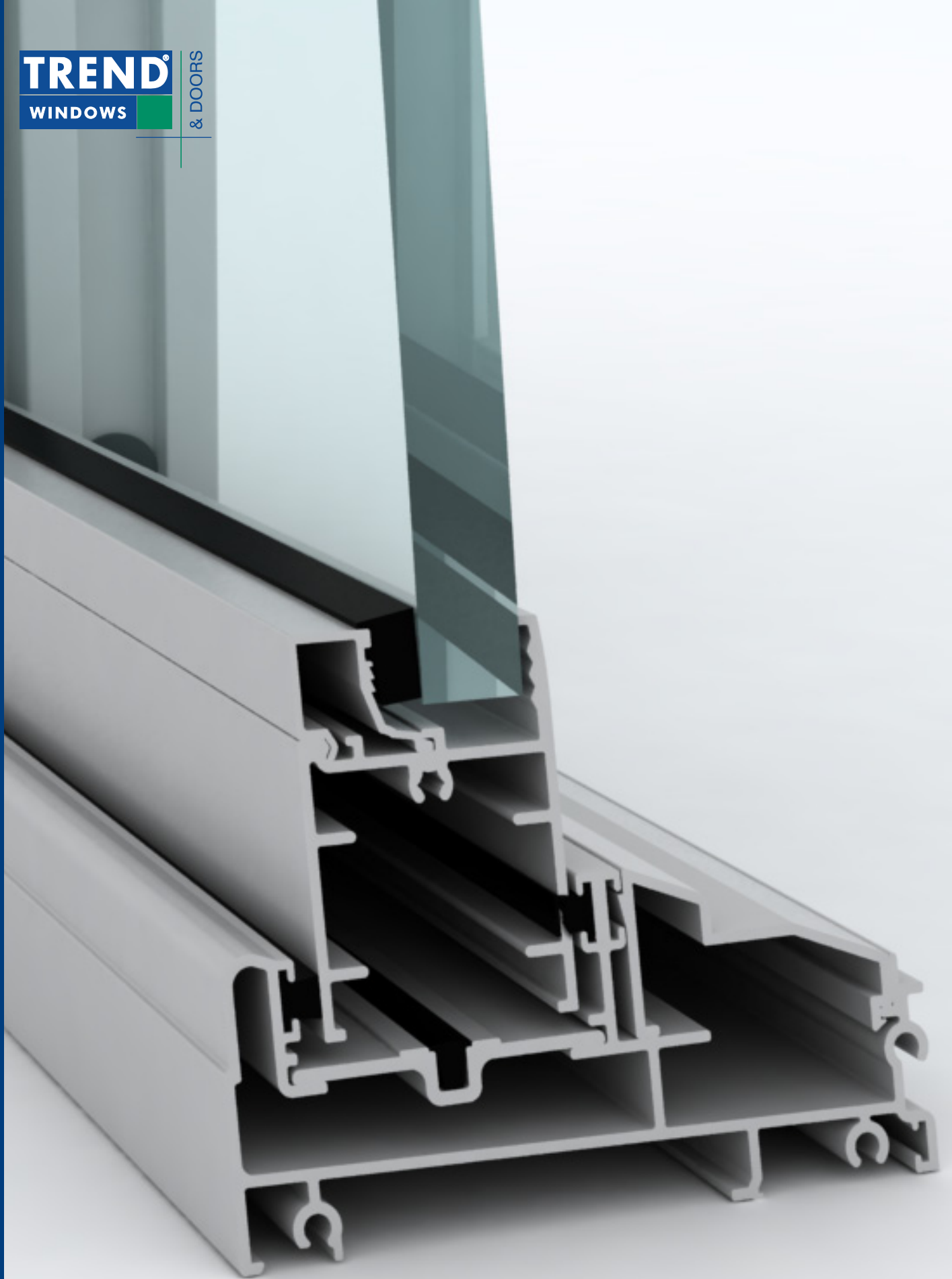
$$\text{Height} = \text{Frame Size} + 60\text{mm}$$

$$\text{Width} = \text{Frame Size} + 60\text{mm}$$

- Secure aluminum windows by nailing through reveal into studwork - fixing at 450mm maximum centres.
- Caulk between render and frame.
- Header beam should be at least 12mm clear of window frame.
- Do not permit weight of eaves or arch bars to bear on any window or door frame. **(Windows and doors are not load bearing.)**
- To ensure the satisfactory long term performance of windows, install sill support (refer to drawings below).



Please note that drawings displayed are not to scale

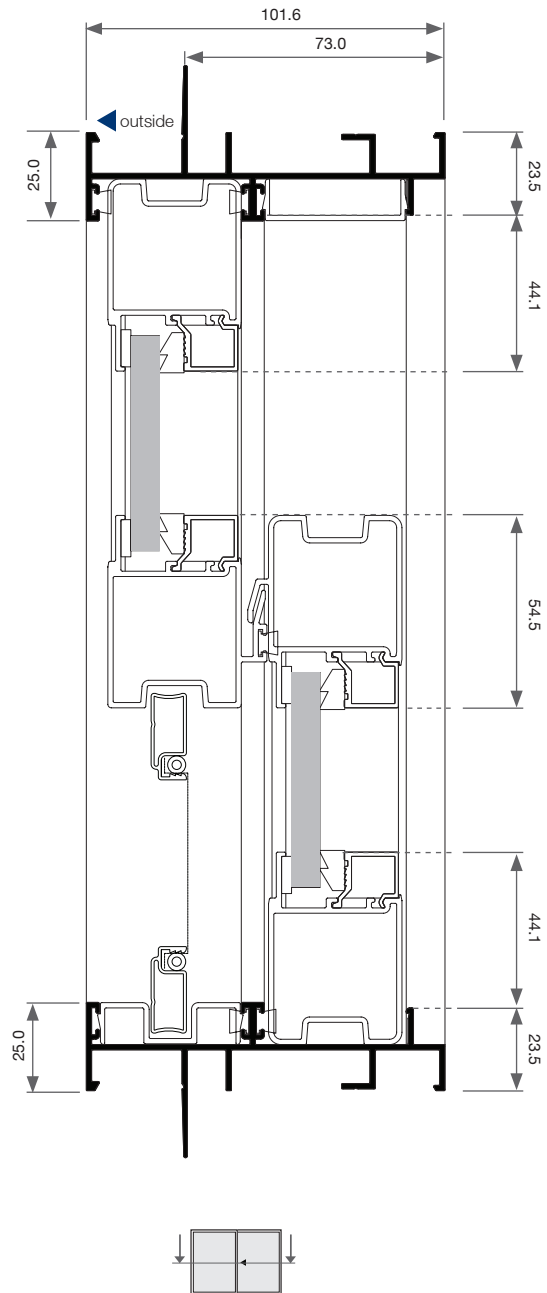
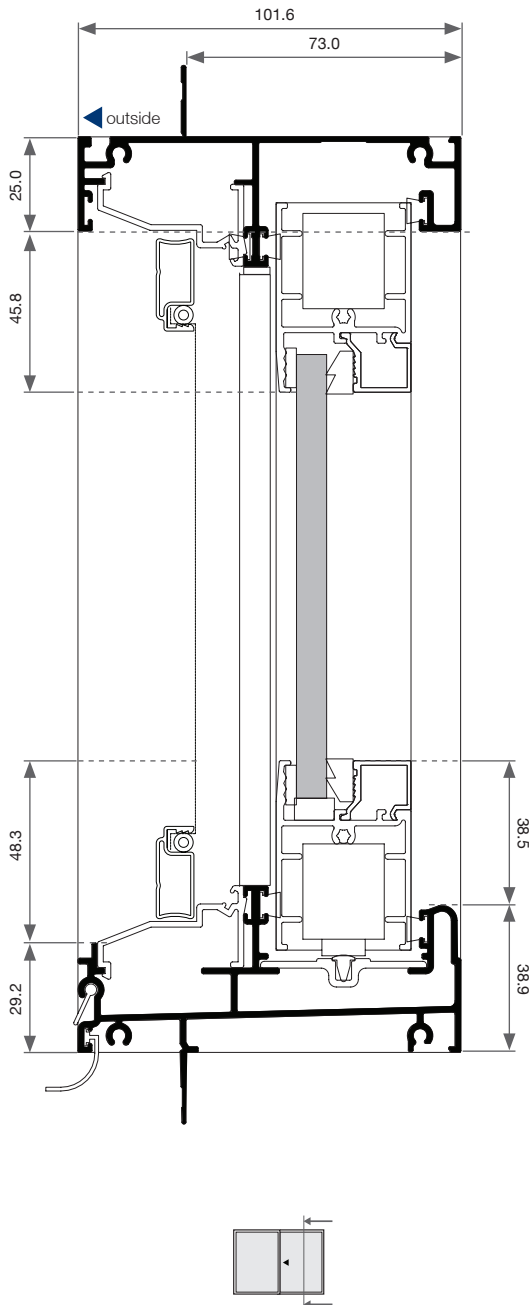


Quantum[®] Sliding Window

Cross Sectional View

Sliding Window - Cross Sectional View

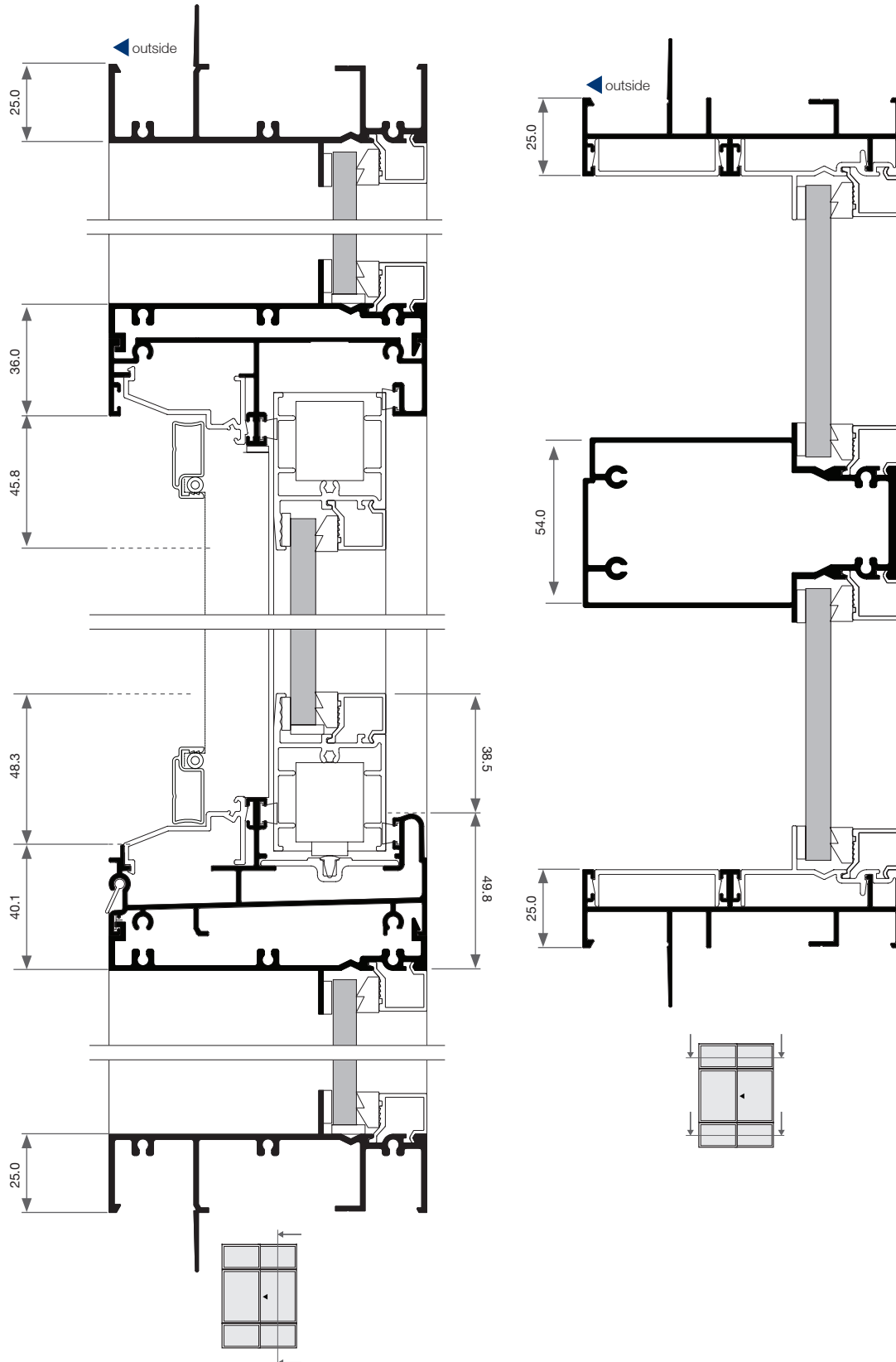
Two Lite



Sliding Window - Cross Sectional View



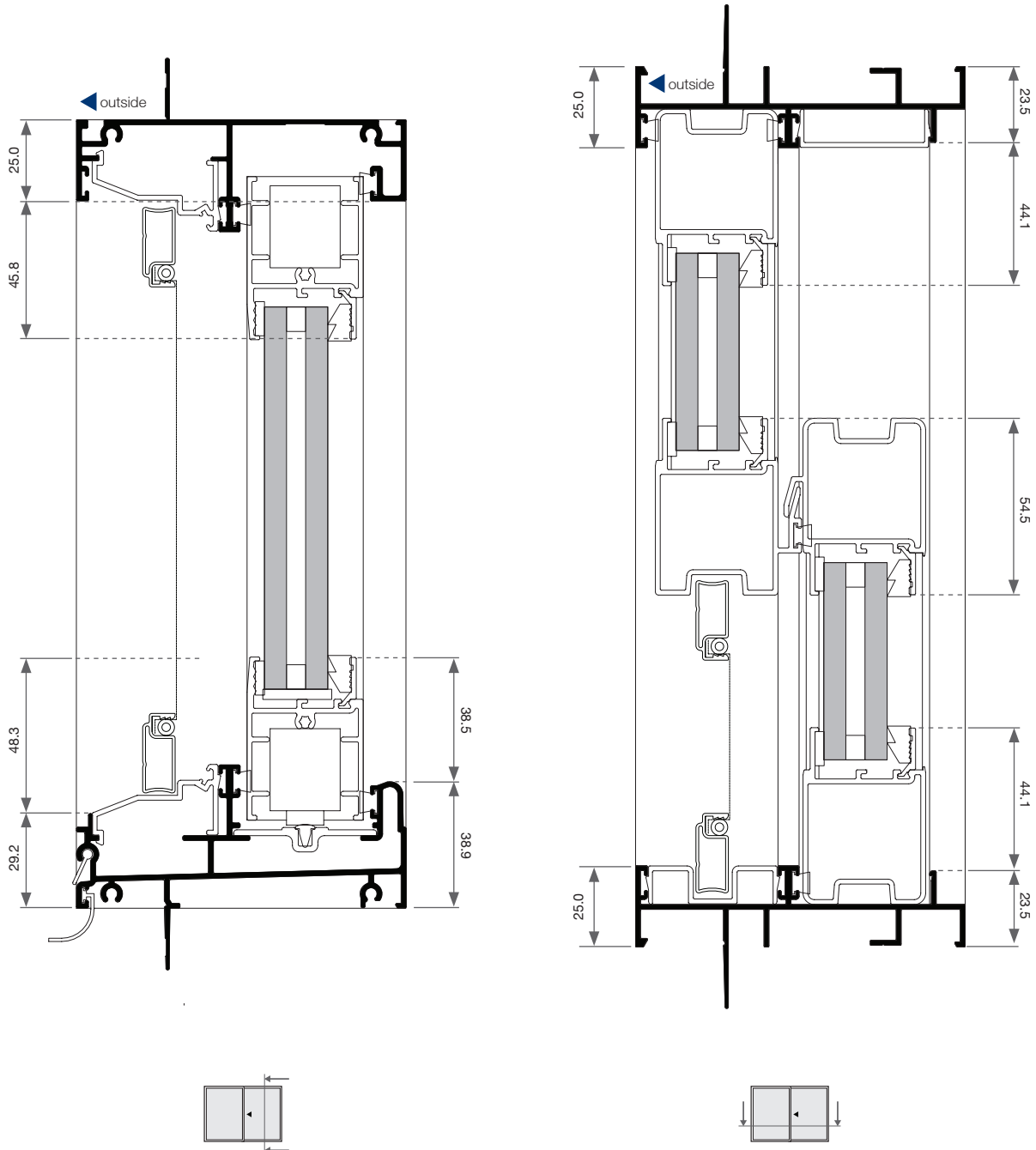
Two Lite | Transom



Please note that drawings displayed are not to scale

Sliding Window - Cross Sectional View

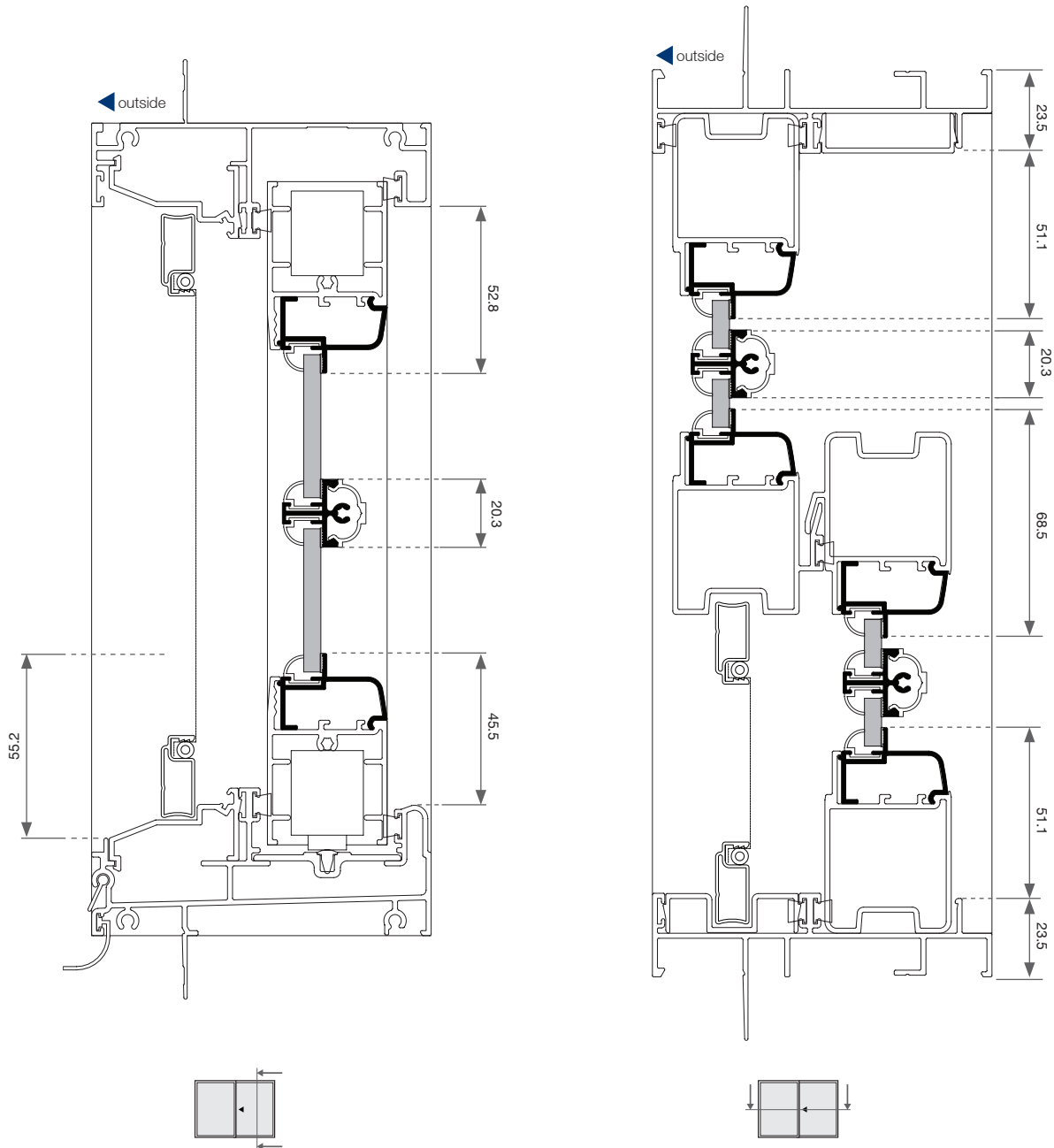
Double Glazed



Sliding Window - Cross Sectional View



Ovolo



Please note that drawings displayed are not to scale