

Crestlite® Pivot Door Features & Benefits

Pivot Door - Features & Benefits

FRAME

Single or paired doors are available.
Robust 102mm commercial aluminium door frame.
Inward, outward or both types of doors are available.

PANEL

Door panels - 65mm rounded profile on rails and stiles and can be revealed.
Stiles are available in 65mm or 115mm.
Mid rail options of 50mm or 115mm are available.
Optional 50mm glue on bars also available.
Standard 65mm stiles can be supplied with 115mm midrail option.

SILL

Sill threshold complies with disability standards under AS1428.
Variety of thresholds available.

GLAZING & ENERGY EFFICIENCY

All Trend® Windows and Doors comply with AS2047.
Glazing options from 5mm toughened glazed to 12.38m thickness.
Frame contains deep pockets allowing for greater overlapping strength of glass.
Secure captive wedge used for glazing frames.
Energy efficiency options available to help reduce energy consumption.
All glazing options are Window Energy Rating Scheme (WERS) rated - providing a wide range of energy efficient solutions.

ACOUSTICS

Acoustic solutions available for improved noise reduction.
High R_w ratings available.



Note: To obtain maximum rating detail contact your nearest Trend Architectural Consultant.

WIND & WATER RATINGS

All Trend® Windows and Doors are designed to meet and surpass 700Pa wind velocity rating and 150Pa water penetration rating and comply with AS2047.
Pascal deflection rates up to 2200Pa.

HARDWARE

Specialised handles are available.
Infinity black hardware is supplied as standard.
Door locks can be keyed alike to other Trend®

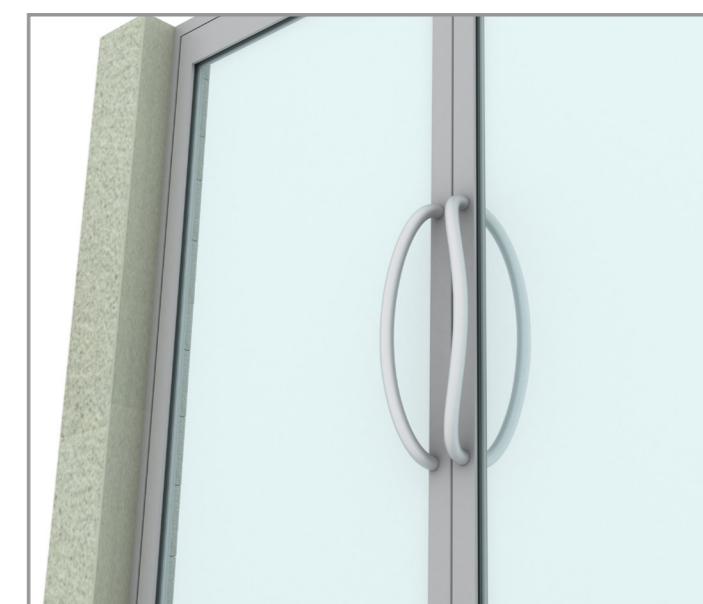
INSTALLATION

Installation must be carried out by an authorised Trend Windows & Doors installer.

FINISHES

Wide range of powdercoat finishes are available (including warranty powders and anodised options).

Pivot Door - Features & Benefits





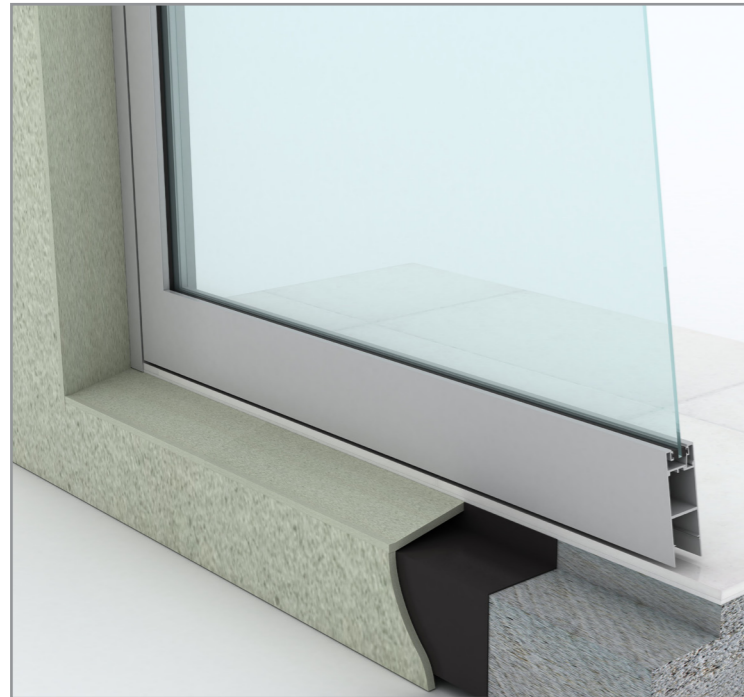
Crestlite® Pivot Door Installation

Pivot Door - Installation

Pivot Door - Installation

Building In Detail | **Blockwork - No Sill**

Building In Detail | **Blockwork - With Sill**



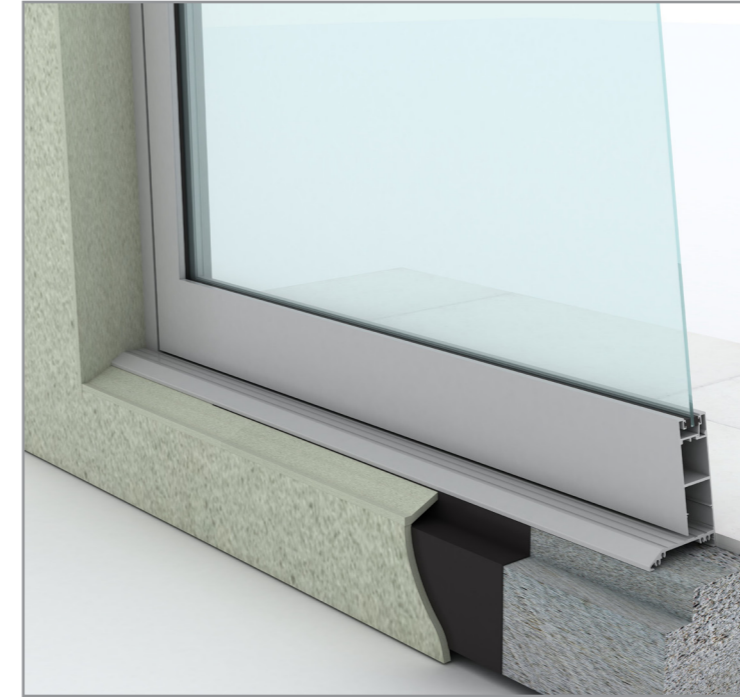
INSTALLING FRAME CORRECTLY

Fit flashing to door surround (refer to drawing below).
Measure the frame opening to ensure that there is sufficient room for the product and additional packing.

Blockwork Opening:

Height = Frame Size + 50mm
Width = Frame Size + 20mm

Header beam should be at least 12mm clear of window frame.
Do not permit weight of eaves or arch bars to bear on any window or door frame. **(Windows and doors are not load bearing.)**
To ensure the satisfactory long term performance of doors, sill must be fully supported.
Ensure outside finish does not block sill drainage holes.



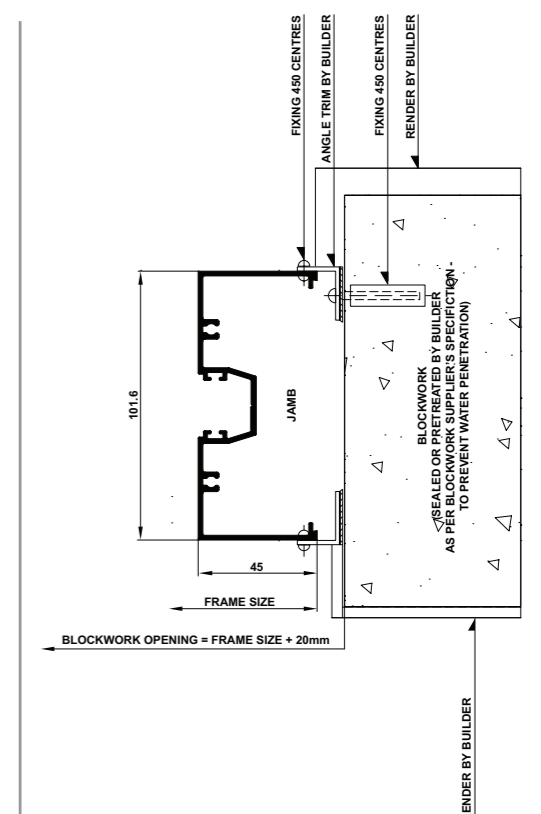
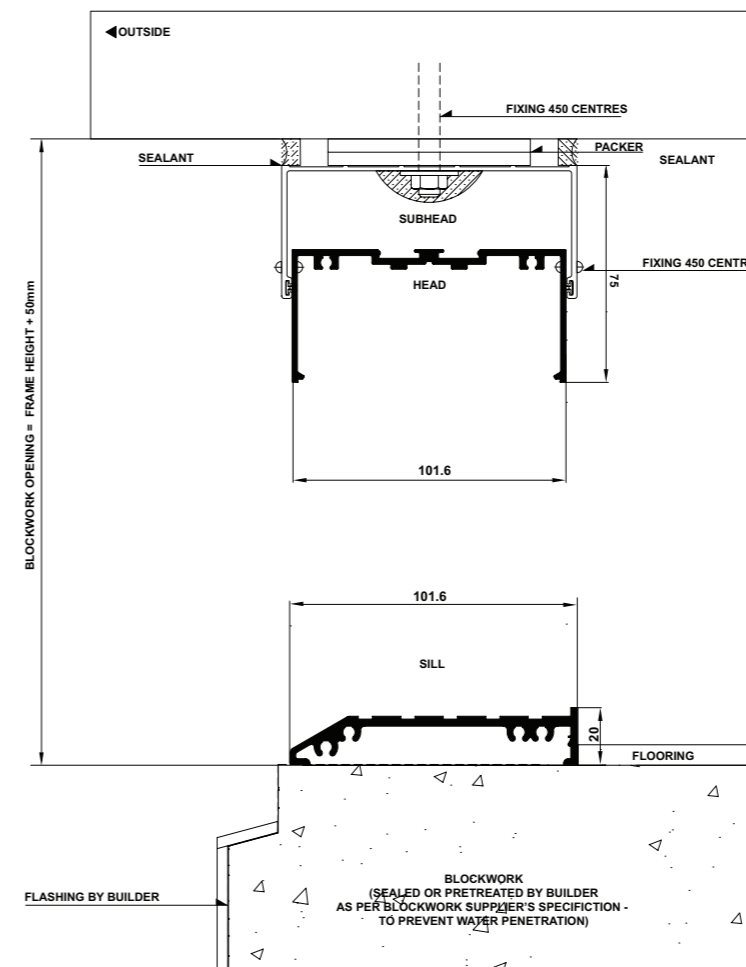
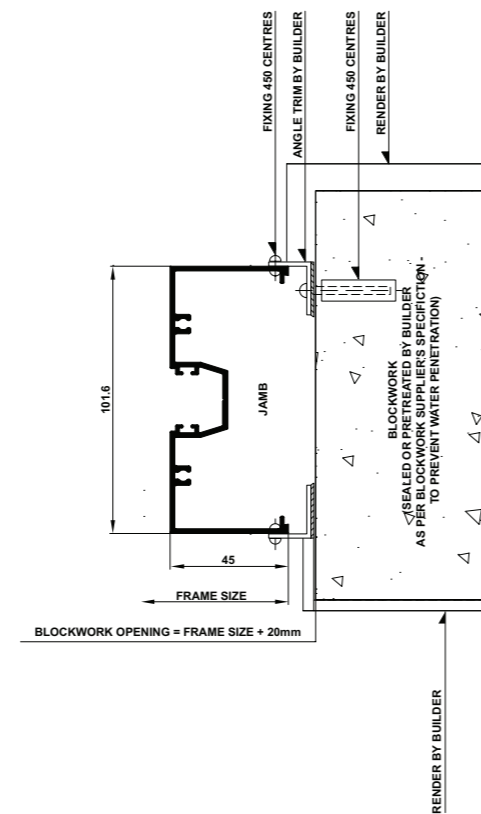
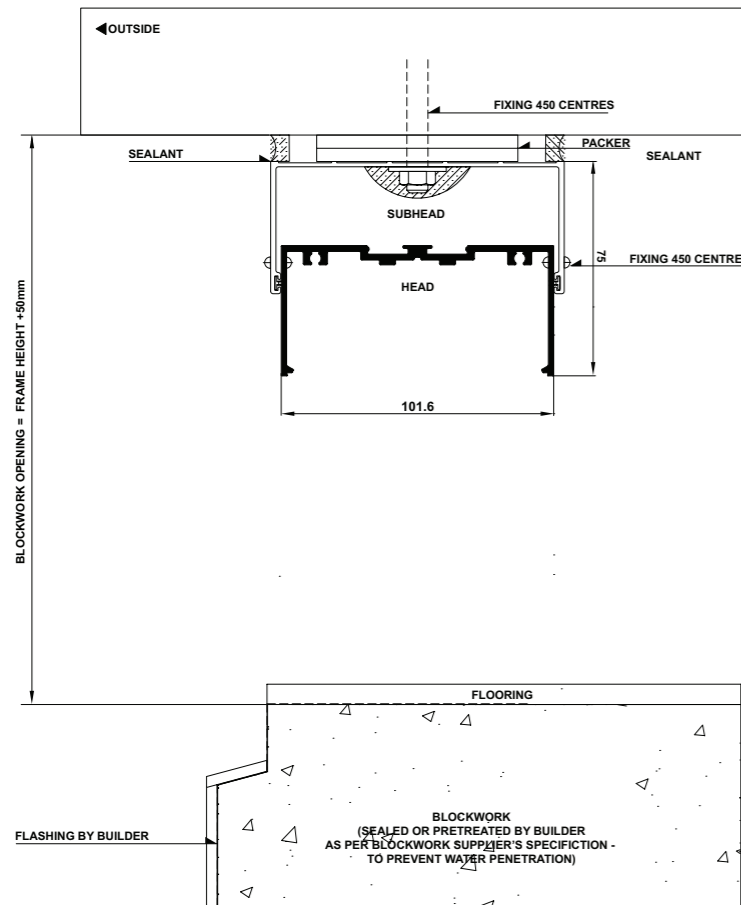
INSTALLING FRAME CORRECTLY

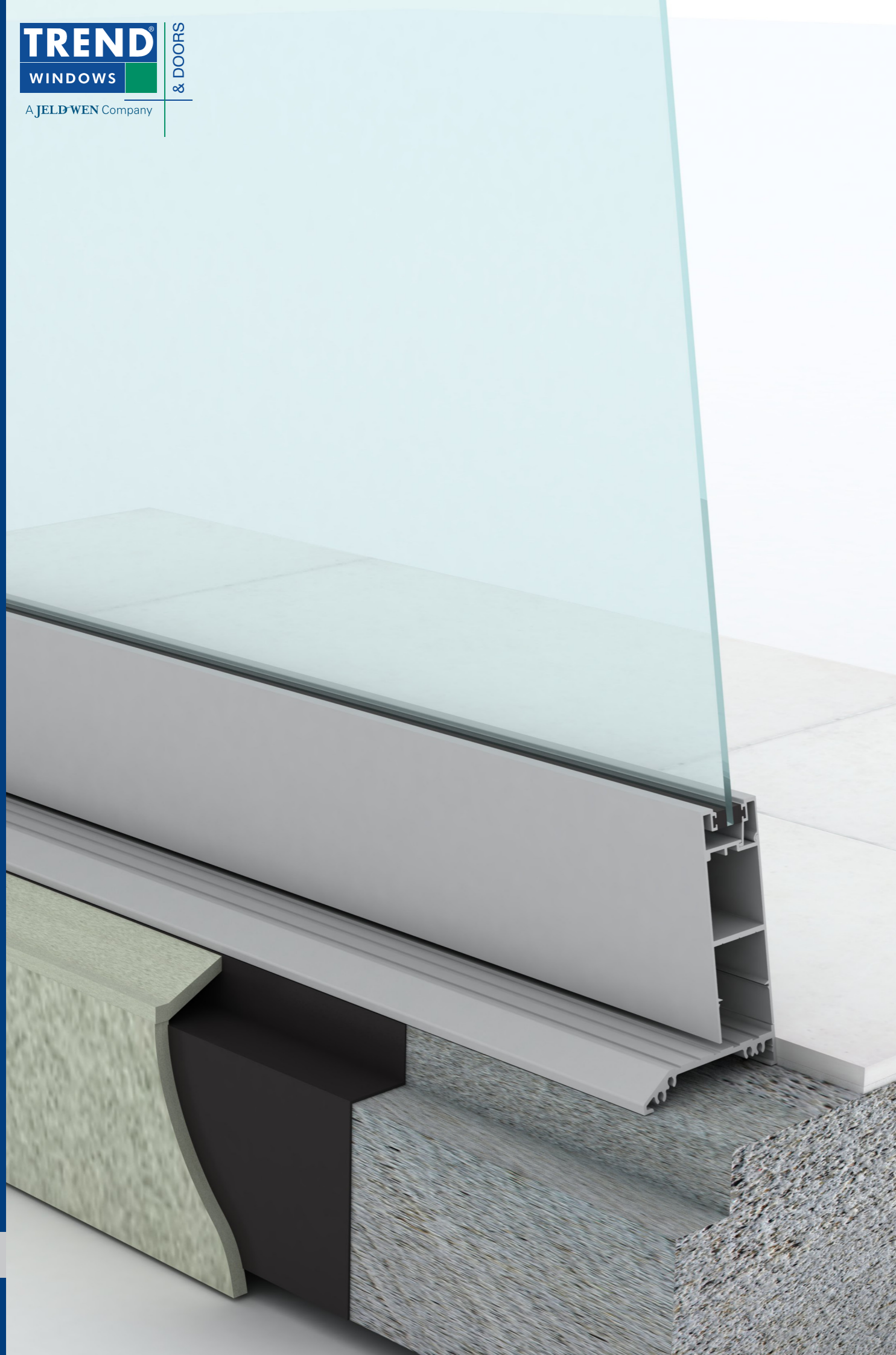
Fit flashing to door surround (refer to drawing below).
Measure the frame opening to ensure that there is sufficient room for the product and additional packing.

Blockwork Opening:

Height = Frame Size + 50mm
Width = Frame Size + 20mm

Header beam should be at least 12mm clear of window frame.
Do not permit weight of eaves or arch bars to bear on any window or door frame. **(Windows and doors are not load bearing.)**
To ensure the satisfactory long term performance of doors, sill must be fully supported.
Ensure outside finish does not block sill drainage holes.





Crestlite® Pivot Door Cross Sectional Views



Pivot Door - Cross Sectional Views

Single Open In | Elevation and Plan View

