



Crestlite® 200 Centre Glazed Double Glazed **Features & Benefits**

200 Centre Glazed Double Glazed - Features & Benefits

FRAME

- Robust commercial aluminium window frame - ideal for larger fixed lite applications.
- Frame profile measures 50mm x 102mm.
- Frames can be glazed from inside or outside - must be specified on order.
- Commercial look for apartments, units or high end residential projects

SILL

- Modern sill provides a clean appearance from the inside and the outside.

GLAZING & ENERGY EFFICIENCY

- All Trend® Windows and Doors comply with AS1288, AS/NZS466, AS/NZA1170 and AS/NZS1664.
- Frame contains deep pockets allowing for greater overlapping of glass.
- Glazing options from 18mm to 24mm insulated glazed units (IGUs).
- Maximum single fixed lite panel is up to 8 sqm each.
- Maximum multiple fixed lite panels is up to 6 sqm each.
- Secure captive wedge used for glazing frames.
- Energy efficiency options available to help reduce energy consumption.
- All glazing options are Window Energy Rating Scheme (WERS) rated - providing a wide range of energy efficient solutions.

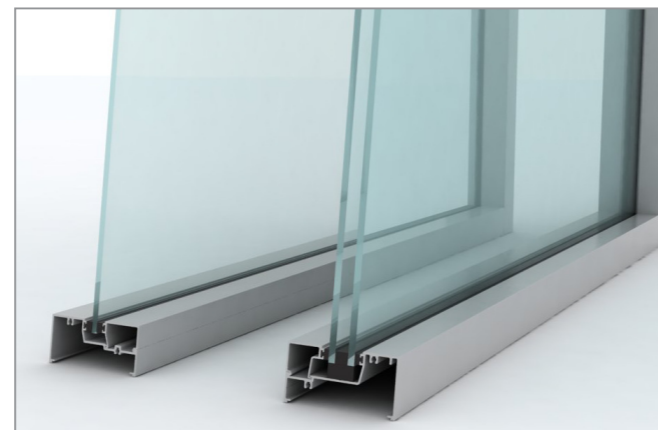
ACOUSTICS

- Acoustic solutions available for improved noise reduction.
- High R_w ratings or STC ratings available.

FRAME ADAPTABILITY

- Crestlite® hinge door, pivot door and awning sashes are designed to be adapted to this frame.

Note: To obtain maximum rating detail contact your nearest Trend Architectural Consultant.

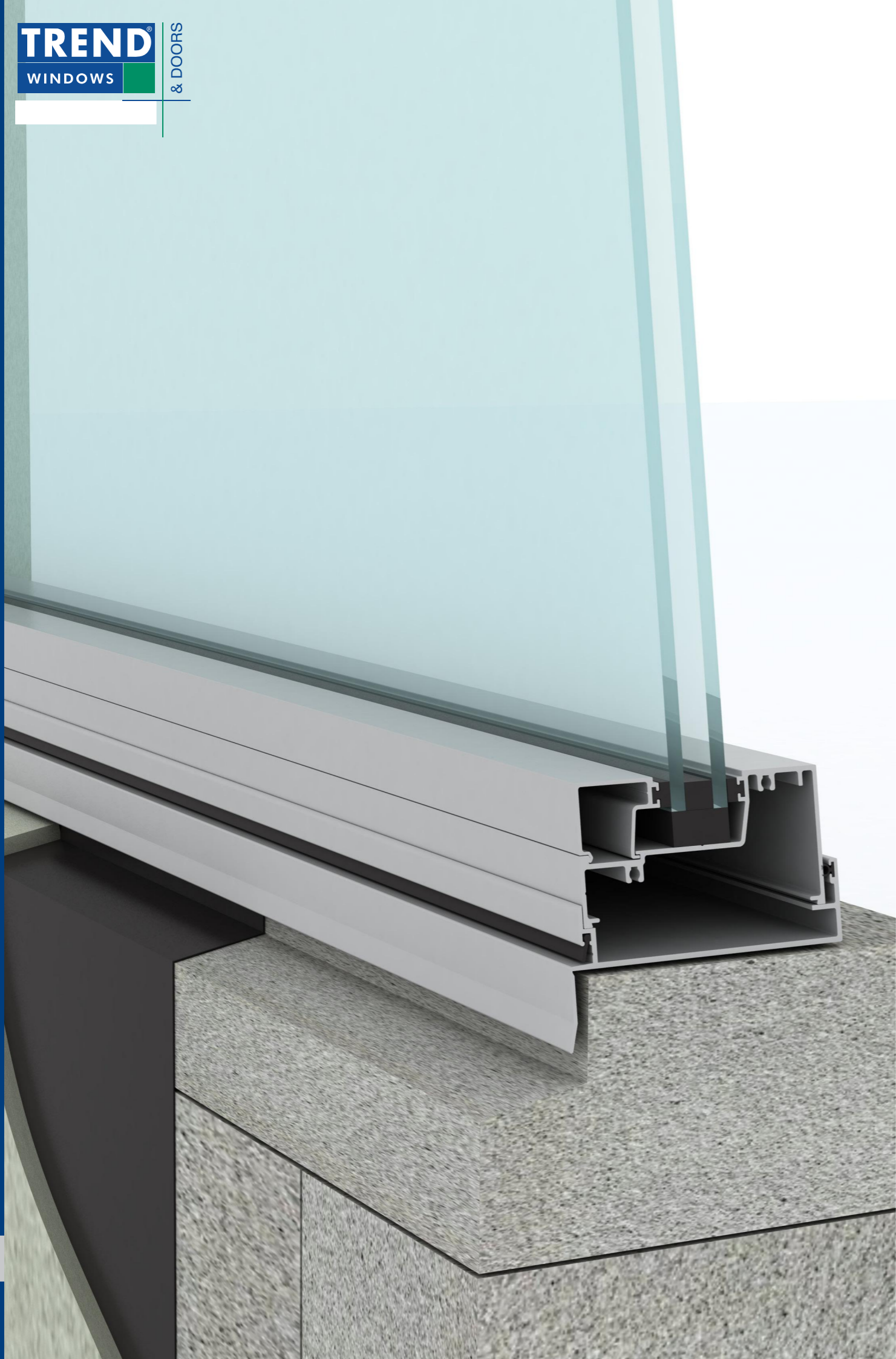


WIND & WATER RATINGS

- All Trend® Windows and Doors are designed to meet and surpass 700Pa wind velocity rating and 150Pa water penetration rating and comply with AS2047.
- Pascal deflection rates up to 2200Pa.
- Centre glazed double glazed rated at an air infiltration of 0.84L/s m² (below the the National Construction Code (NCC) for Air conditioned spaces of 1.00L/s m²) perfect for both air conditioned and non-air conditioned spaces.

FINISHES

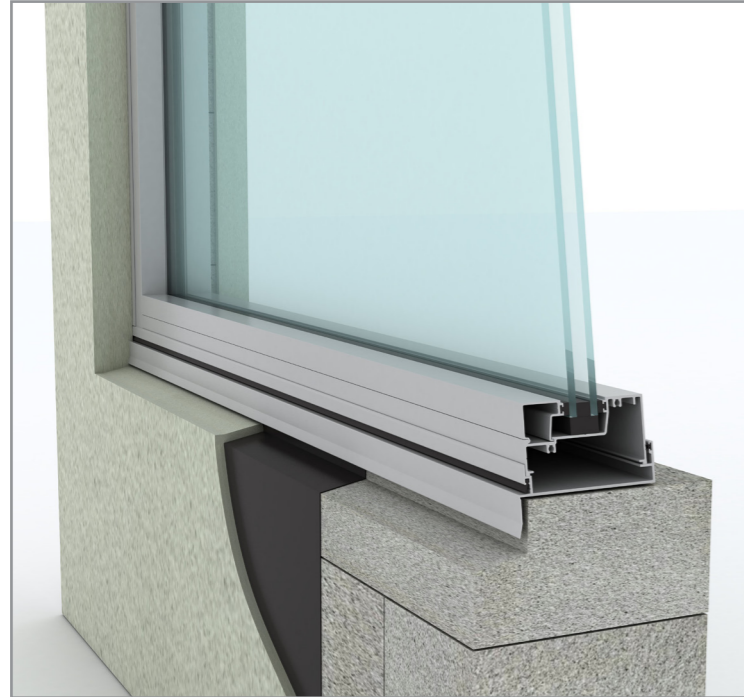
- Wide range of powdercoat finishes are available (including warranty powders and anodised options).



Crestlite[®] 200 Centre Glazed Double Glazed Installation

200 Centre Glazed Double Glazed - Installation

Building In Detail | **Blockwork**



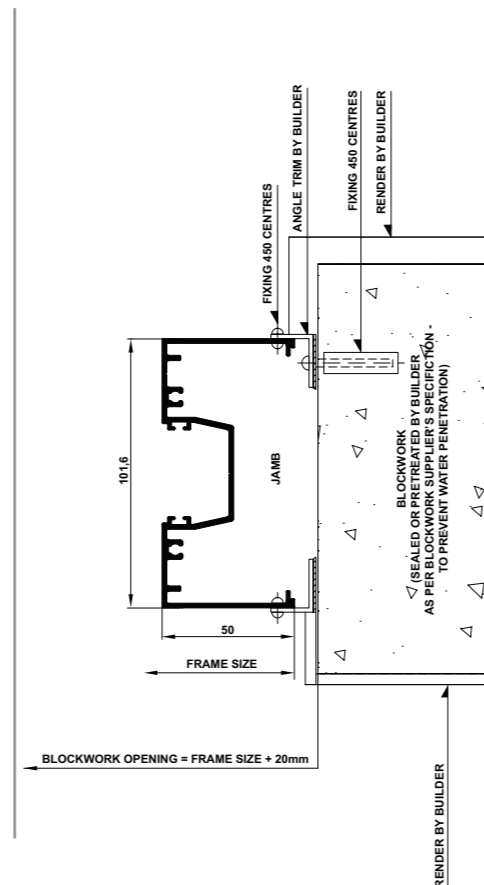
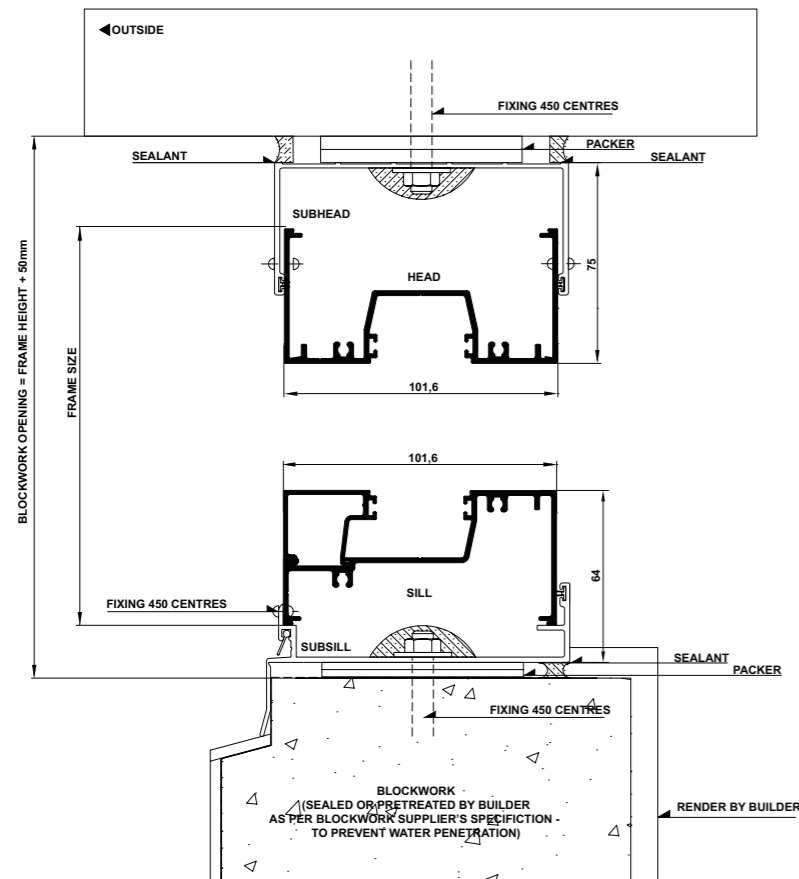
INSTALLING FRAME CORRECTLY

- Measure the frame opening to ensure that there is sufficient room for the product and additional packing.

Blockwork Opening:

Height = Frame Size + 50mm
Width = Frame Size + 20mm

- Header beam should be at least 12mm clear of window frame.
- Fit subframe to opening and seal fixings.
- Seal ends of subsill with angle.
- Fit window to subframe (screw or pop-rievet).
- Do not permit weight of eaves or arch bars to bear on any window or door frame. **(Windows and doors are not load bearing.)**





Crestlite® 200 Centre Glazed Double Glazed **Cross Sectional Views**

200 Centre Glazed Double Glazed - Cross Sectional View

200 Centre Glazed Double Glazed - Cross Sectional View

Single Lite

Two Lite with Lowlite

