

QLD



WINDOW AND DOOR SPECIFICATION FOR 7-STARS

ACHIEVING ENERGY EFFICIENCY

Under the NCC 2022 Energy Efficiency Provisions, all new homes and building permits issued in Queensland from May 1st, 2024, must meet a minimum energy efficiency rating of 7 stars. Here, we'll help you understand how your windows and doors can help you achieve this, regardless of whether you're building or renovating.

What does this mean for your windows and doors?

Energy efficiency exists on a scale, with cost and design preferences influencing your choices for your home. In warmer climates, achieving a 7-star energy rating is easier with windows and doors with a low Solar Heat Gain Coefficient (SHGC), which helps reduce heat gain from the sun to keep your home cooler. A low U-value further enhances energy efficiency by reducing heat transfer, helping to maintain a comfortable indoor temperature year-round with less reliance on heating and cooling.



Introducing the Good, Better, Best, Superior offer

While performance will be an important factor in determining what glass you choose, other considerations such as cost, window colours, availability, and lead times may influence your decision. Our offer below allows you to achieve 7-star compliance at a competitive cost. There are many other options available to suit a range of requirements.

Good 

LOW E CLEAR

Synergy Sliding Window SHGC: 0.62

A good upgrade from Standard Clear Single Glazing is Low E Clear. The glass is coated in thin layers of metallic oxide when manufactured, which reflects radiant heat helping to maintain a cooler interior.

Better 

LOW E NEUTRAL

Synergy Sliding Window SHGC: 0.46

For an even better performance for difficult climate zones, orientations or house designs, you can choose Low E Neutral which provides a significant improvement in reducing your SHGC.

Best 

LOW E GREY

Synergy Sliding Window SHGC: 0.32

A single glazed unit with Low E Grey toned glass. This combination of glass provides superior energy efficiency and will help with compliance for even the most demanding designs or sites.

Superior 

LOW E GREY – DG

Synergy Sliding Window SHGC: 0.32

Double glazing with Low E Grey toned glass provides a significant improvement in the U value helping to retain heat in cooler months, and SHGC helping to prevent the heat from the sun entering your house in the warmer months.

Applying this to your build

For the standard single-storey and double-storey home, it's easy to choose from our Good, Better, Best and Superior options. Alongside design and orientation, the products and glazing on the following pages will assist in achieving 7-stars for your building.



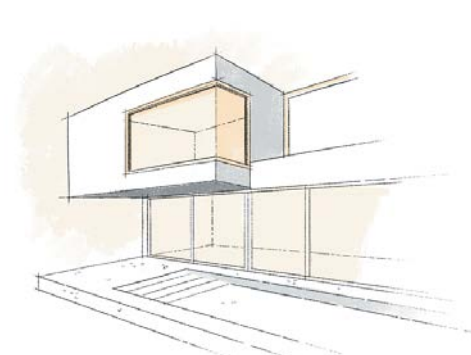
Single Storey Detached

Up to 27% glazing ratio



Double Storey Townhouse

Up to 20% glazing ratio



Double Storey Detached

Up to 28% glazing ratio

		Awning	Fixed	SD	SW	Single Storey	Townhouse	Double Storey
Good	Synergy • Low E Clear	0.56	0.66	0.60	0.62	SG Clear HC Low E 7+ UV & 0.75+ SHGC	SG Clear HC Low E 7+ UV & 0.75+ SHGC	—
Better	Synergy • Low E Neutral	0.43	0.49	0.47	0.46	SG Neutral HC Low E 6.5 UV & 0.65 SHGC	SG Neutral HC Low E 6.5 UV & 0.65 SHGC	SG Neutral HC Low E 6.5 UV & 0.65 SHGC
Best	Synergy • Low E Grey	0.30	0.34	0.32	0.32	—	SG Grey HC Low E 5.5 UV & 0.55 SHGC	SG Grey HC Low E 5.5 UV & 0.55 SHGC
Superior	Synergy • Low E Grey – DG	0.32	0.37	0.34	0.32	—	—	DG Grey Low E 4 UV & 0.41 SHGC

The above values are the SHGC.

DG - Double Glazed

SG - Single Glazed

SC - Soft Coat Low E

HC - Hard Coat Low E

SD - Sliding Doors

SW - Sliding Windows

Dive deeper into the numbers

Please see below for a guide to our Good, Better, Best and Superior offer.

WERS Code	Product Series	Option	Glass Type	U Value	SHGC	Reduction % of U Value
Residential Awning Window						
TND-002-002	Synergy	Standard	Clear	6.5	0.65	-
TND-002-TBA	Synergy	Good	Low E Clear	5.1	0.56	14%
TND-002-038	Synergy	Better	Low E Neutral	5	0.43	34%
TND-002-037	Synergy	Best	Low E Grey	5	0.3	54%
TND-002-TBA	Synergy	Superior	Low E Grey – DG	3.3	0.32	51%
Residential Fixed Window						
TND-003-033	Synergy	Standard	Clear	5.9	0.78	-
TND-003-032	Synergy	Good	Low E Clear	4	0.66	15%
TND-003-029	Synergy	Better	Low E Neutral	4	0.49	37%
TND-003-026	Synergy	Best	Low E Grey	3.9	0.34	56%
TND-003-TBA	Synergy	Superior	Low E Grey – DG	2.2	0.37	53%
Residential Sliding Window						
TND-001-001	Synergy	Standard	Clear	6.5	0.73	-
TND-001-TBA	Synergy	Good	Low E Clear	4.7	0.62	15%
TND-001-040	Synergy	Better	Low E Neutral	4.7	0.46	37%
TND-001-039	Synergy	Best	Low E Grey	4.7	0.32	56%
TND-001-TBA	Synergy	Superior	Low E Grey – DG	3.3	0.32	56%
Residential Sliding Door						
TND-017-001	Synergy	Standard	Clear	6.4	0.73	-
TND-017-020	Synergy	Good	Low E Clear	4.4	0.6	18%
TND-017-035	Synergy	Better	Low E Neutral	4.6	0.47	36%
TND-017-032	Synergy	Best	Low E Grey	4.6	0.32	56%
TND-017-TBA	Synergy	Superior	Low E Grey – DG	2.8	0.34	53%
Architectural Awning Window						
TND-059-002	Quantum	Standard	Clear	6.7	0.56	-
TND-059-032	Quantum	Good	Low E Clear	5.7	0.48	14%
TND-059-020	Quantum	Better	Low E Neutral	5.6	0.37	34%
TND-059-023	Quantum	Best	Low E Grey	5.6	0.27	52%
TND-059-TBA	Quantum	Superior	Low E Grey – DG	3.9	0.28	50%
Architectural Fixed Window						
TND-024-001	Quantum	Standard	Clear	6.2	0.75	-
TND-024-006	Quantum	Good	Low E Clear	4.4	0.65	13%
TND-024-019	Quantum	Better	Low E Neutral	4.5	0.49	35%
TND-024-016	Quantum	Best	Low E Grey	4.4	0.33	56%
TND-031-TBA	Quantum	Superior	Low E Grey – DG	2.3	0.37	51%
Architectural Sliding Window						
TND-078-002	Quantum	Standard	Clear	6.7	0.67	-
TND-078-031	Quantum	Good	Low E Clear	5.2	0.58	13%
TND-078-019	Quantum	Better	Low E Neutral	5.2	0.43	36%
TND-078-022	Quantum	Best	Low E Grey	5.1	0.3	55%
TND-079-057	Quantum	Superior	Low E Grey – DG	3.4	0.29	57%
Architectural Sliding Door						
TND-017-001	Quantum	Standard	Clear	6.4	0.73	-
TND-017-020	Quantum	Good	Low E Clear	4.4	0.6	18%
TND-017-035	Quantum	Better	Low E Neutral	4.6	0.47	36%
TND-017-032	Quantum	Best	Low E Grey	4.6	0.32	56%
TND-017-TBA	Quantum	Superior	Low E Grey – DG	2.8	0.34	53%



The information contained in this document is general in nature, and before relying on the material in any important matters, users should carefully evaluate its accuracy, currency, completeness and relevance for their purpose. This document is not intended, and should not be relied upon as, the ultimate and complete source of information, a substitute for consulting the relevant legislation or for obtaining appropriate professional advice relevant to your particular circumstances. While every effort has been made to ensure the information is accurate, Trend Windows and Doors does not accept responsibility or liability for any loss, damage, cost or expense incurred as a result of the use of, or reliance on, information contained in this document. No responsibility is accepted by Trend Windows and Doors for any mistakes, errors or omissions in this document.