

## Louvre Window - Features & Benefits

### FRAME

- Overall frame size 130mm wide.
- When using 130mm frame, minimum recommended reveal size is 138mm.
- Installed as a single frame or ideal for combination styles with other Quantum® products.

### LOUVRE BLADES

- Blades are 152mm or 102mm widths.
- Opaque, tinted or toughened glass blades available.
- Timber, aluminium blades available.
- 6mm toughened glass blades are supplied as standard.

### GLAZING & ENERGY EFFICIENCY

- All Trend® Windows and Doors comply with Australian Standards AS1288.
- 6mm glass supplied only as standard.
- Optional frosted, etched, tinted or toughened glass available.
- Energy efficiency options available to help reduce home energy consumption.
- All glazing options are Window Energy Rating Scheme (WERS) rated - providing a wide range of energy efficient solutions.

### ACOUSTICS

- Acoustic solutions available for improved noise reduction.

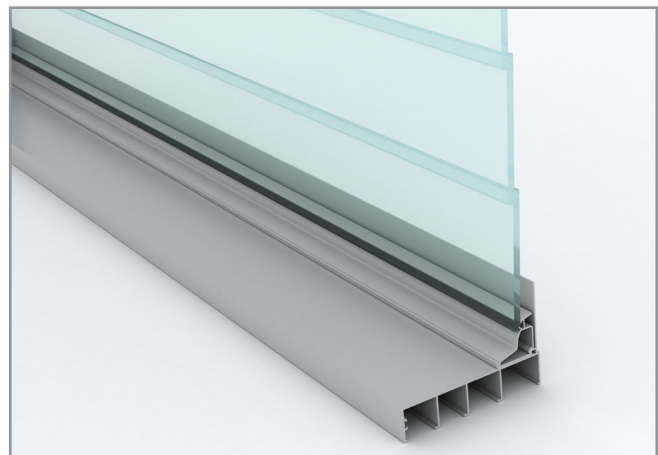
### WIND & WATER RATINGS

- All Trend® Windows and Doors are designed to meet and surpass 700Pa wind velocity rating and 150Pa water penetration rating and comply with Australian Standards AS2047.
- Louvre windows rated at an air infiltration of 1.48L/s m<sup>2</sup>.

### SECURITY

- 100mm safety window restrictor is available if required.
- Security bars to fit standard blade widths\*\*.
- **Breezway** Stronghold System available.

\*\*Breezway 130mm Easy Frame louvre only.





## Louvre Window - Features & Benefits

### BUSHFIRE

---

- Meets BAL-29 - to Australian Standards AS3959-2009.

### HARDWARE

---

- Handles can be configured to left, right, high or low placement.
- Optional *Altair Power Louvre* available for “out-of-reach” configurations.
- Optional key lock available.
- Optional, easy to operate A13, low profile and “O-Ring” handles available.



### OPTIONS

---

- Wide range of powder coated colours.
- Customised WERS ratings.
- Variety of sizes and custom made options available.
- Variety of configuration options available.
- Easy to install flyscreens fitted to exterior of window.

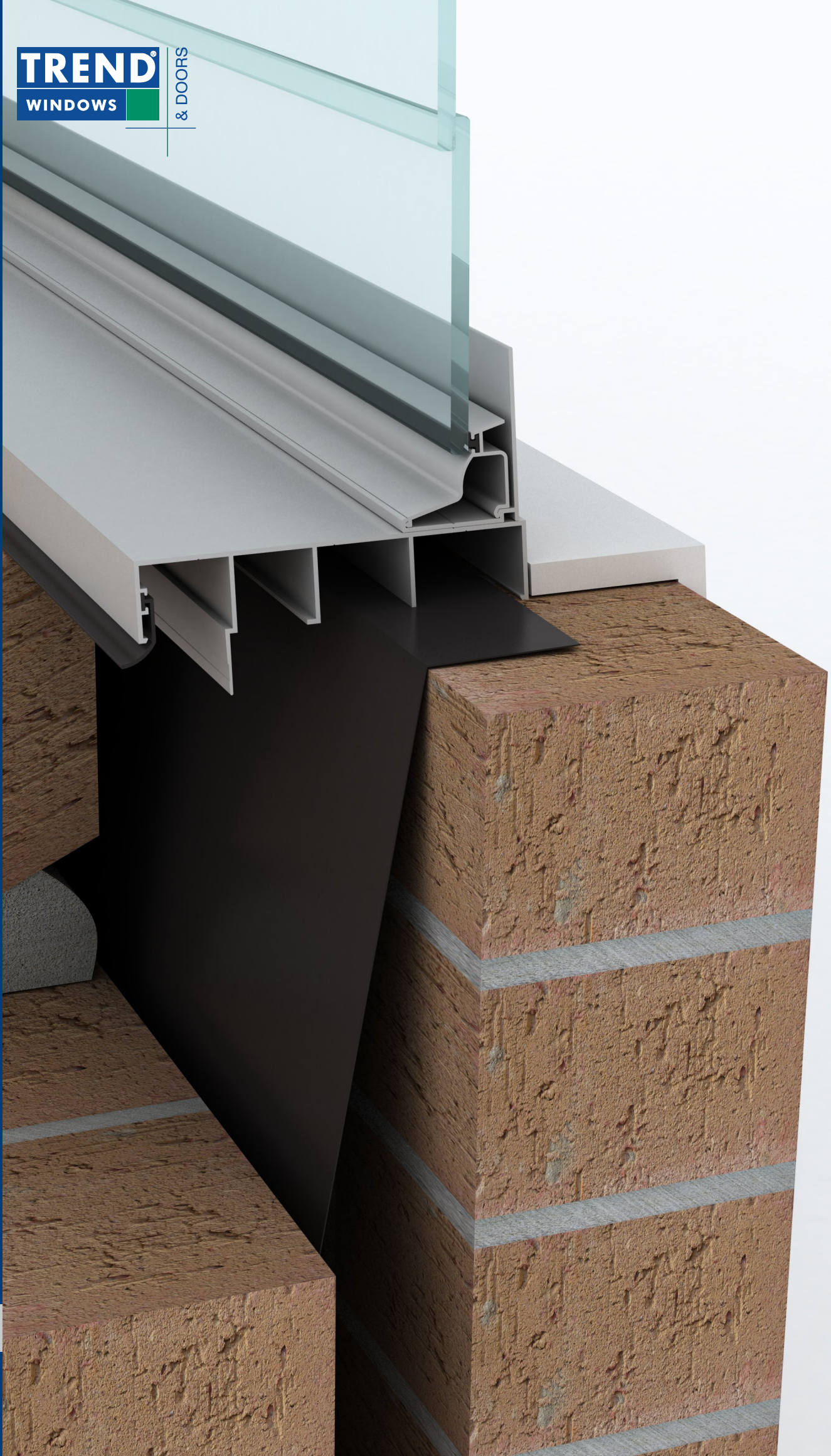


### DELIVERY

---

- Protective wrapping for delivery to site comes standard for all Quantum® products.

Please note that drawings displayed are not to scale





# Quantum<sup>®</sup> Louvre Window Installation

---

# Louvre Window - Installation

Building In Detail | Brick Veneer - 240mm wall



## INSTALLING FRAME CORRECTLY

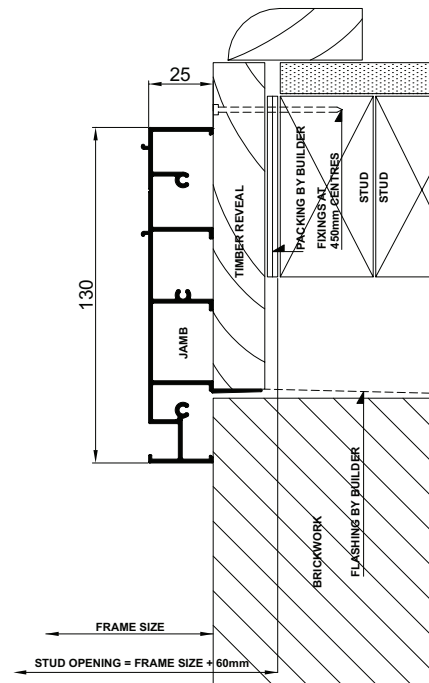
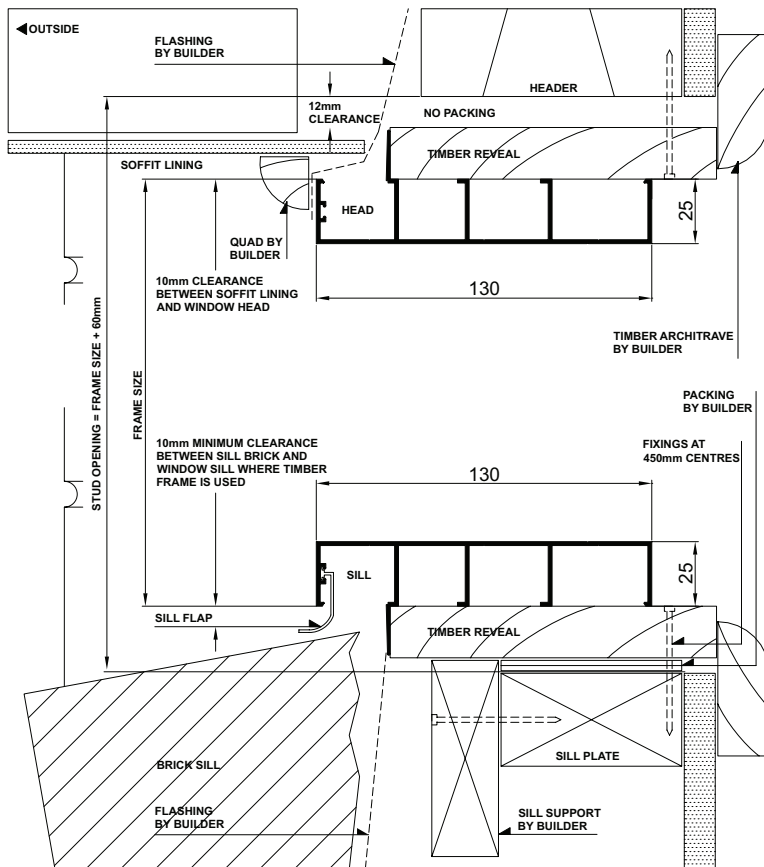
- Fit flashing to window surround (refer to drawing below).
- Measure the frame opening to ensure that there is sufficient room for the product and additional packing.

### Stud Opening:

Height = Frame Size + 60mm

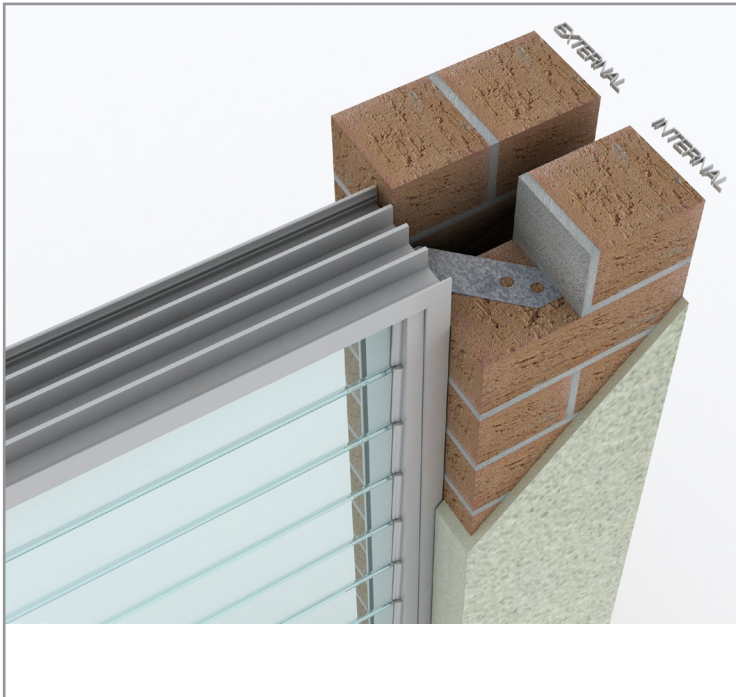
Width = Frame Size + 60mm

- Secure aluminum windows by nailing through reveal into studwork - fixing at 450mm maximum centres.
- Sill bricks should be at least 10mm clear of window frame to allow settlement in brick veneer construction.
- Header beam should be at least 12mm clear of window frame.
- Do not permit weight of eaves or arch bars to bear on any window or door frame. **(Windows and doors are not load bearing.)**
- To ensure the satisfactory long term performance of window, install sill support (refer to drawings below).



# Louvre Window - Installation

Building In Detail | **Double Brick - 280mm wall**



## INSTALLING FRAME CORRECTLY

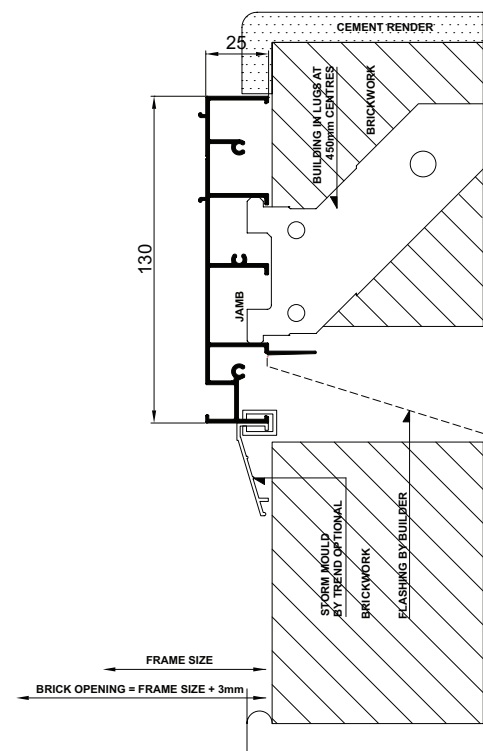
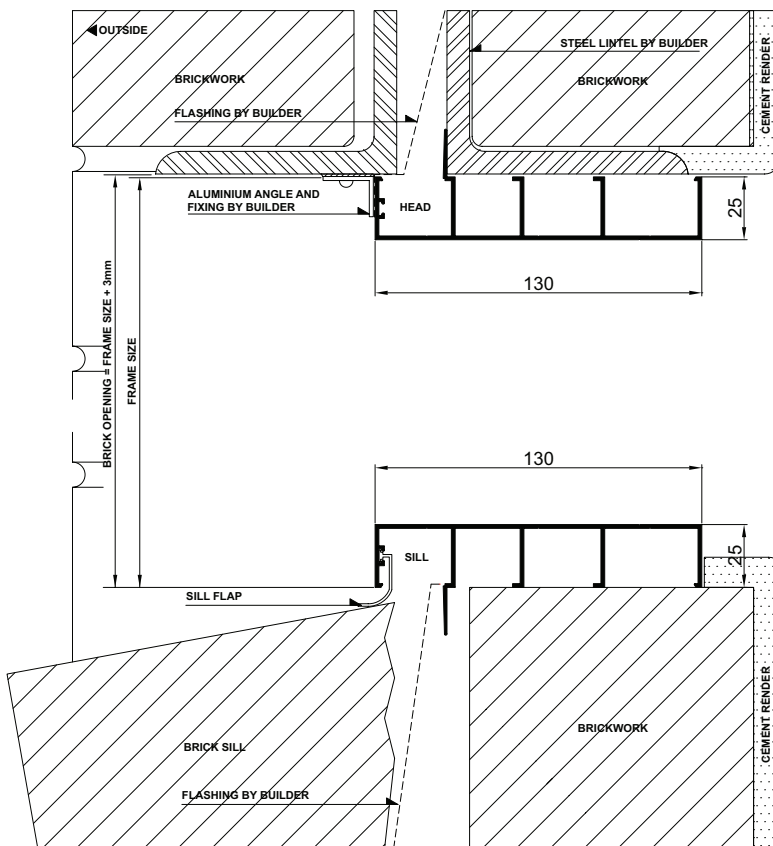
- Fit flashing to window surround (refer to drawing below).
- Measure the frame opening to ensure that there is sufficient room for the product and additional packing.

### **Brick Opening:**

Height = Frame Size + 3mm

Width = Frame Size + 3mm

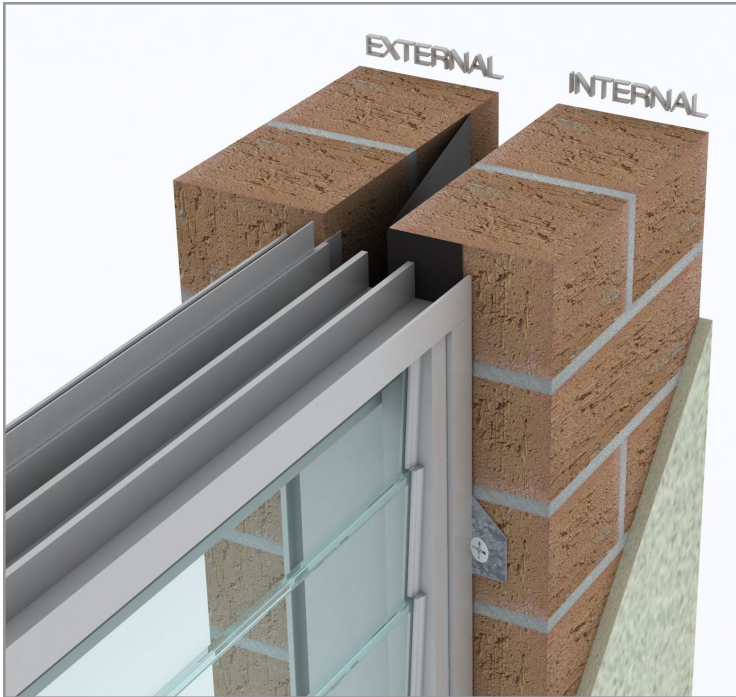
- Secure aluminum windows by using building lug - fixing at 450mm maximum centres.
- Sill bricks should be at least 10mm clear of window frame to allow settlement in brick veneer construction.
- Do not permit weight of eaves or arch bars to bear on any window or door frame. **(Windows and doors are not load bearing.)**



Please note that drawings displayed are not to scale

# Louvre Window - Installation

Building In Detail | Double Brick - 280mm wall | Prepared Opening



## INSTALLING FRAME CORRECTLY

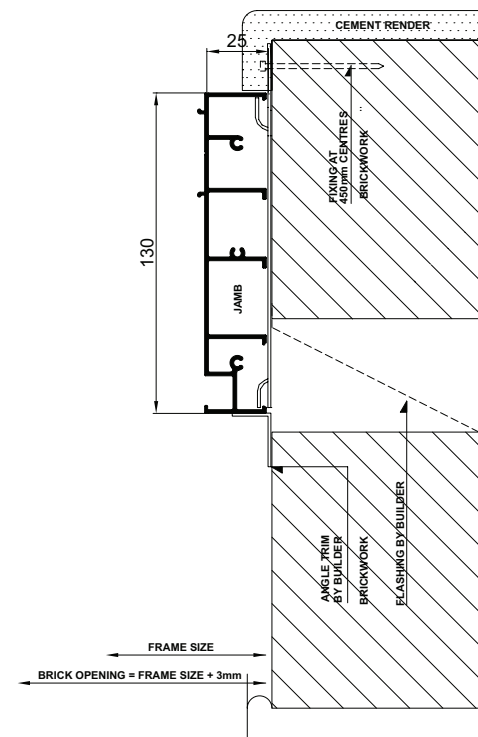
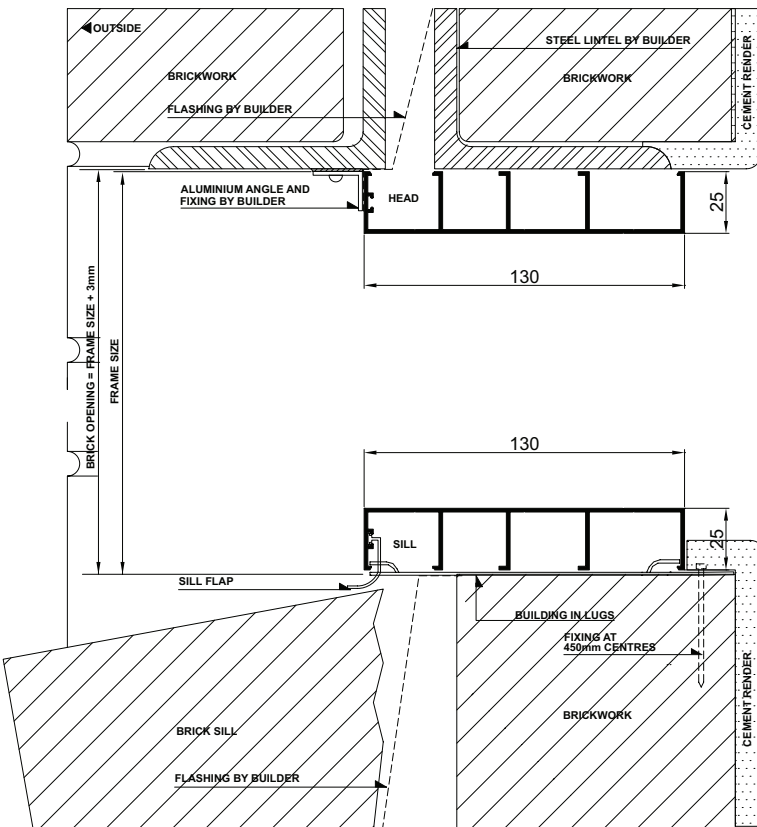
- Fit flashing to window surround (refer to drawing below).
- Measure the frame opening to ensure that there is sufficient room for the product and additional packing.

### Brick Opening:

Height = Frame Size + 3mm

Width = Frame Size + 3mm

- Secure aluminum windows by using building lug - fixing at 450mm maximum centres.
- Sill bricks should be at least 10mm clear of window frame to allow settlement in brick veneer construction.
- Do not permit weight of eaves or arch bars to bear on any window or door frame. **(Windows and doors are not load bearing.)**



# Louvre Window - Installation

Building In Detail | Cladding on Studwall



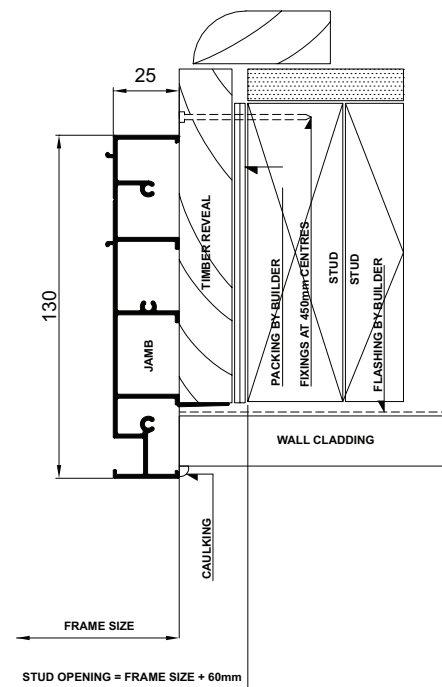
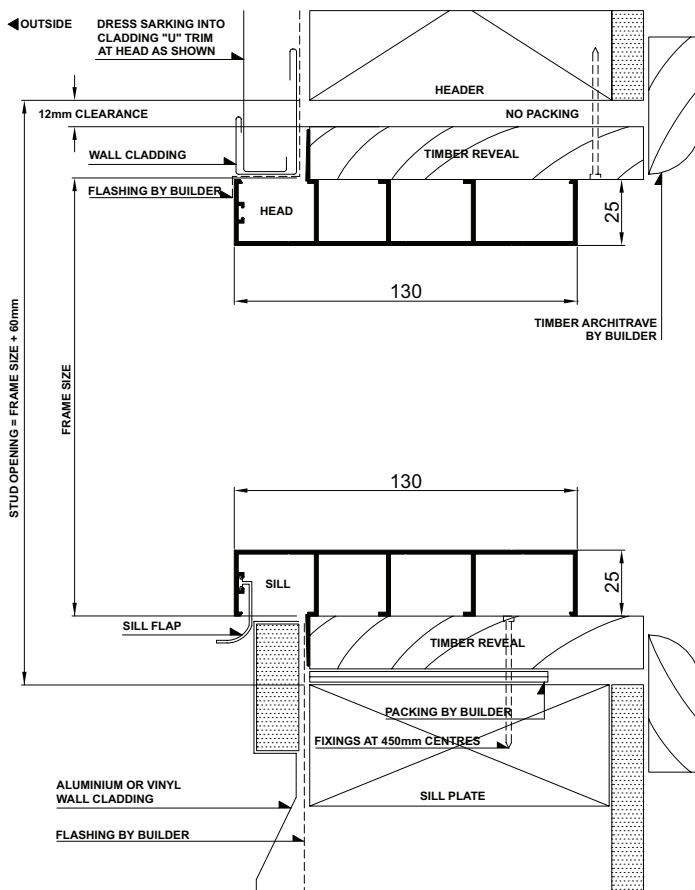
## INSTALLING FRAME CORRECTLY

- Fit flashing to window surround (refer to drawing below).
- Measure the frame opening to ensure that there is sufficient room for the product and additional packing.

### Stud Opening:

Height = Frame Size + 60mm  
Width = Frame Size + 60mm

- Secure aluminum windows by nailing through reveal into studwork - fixing at 450mm maximum centres.
- Header beam should be at least 12mm clear of window frame.
- Do not permit weight of eaves or arch bars to bear on any window or door frame. **(Windows and doors are not load bearing.)**
- To ensure the satisfactory long term performance of windows, install sill support (refer to drawings below).



Please note that drawings displayed are not to scale



# Louvre Window - Installation

Building In Detail | **Blockwork**



## INSTALLING FRAME CORRECTLY

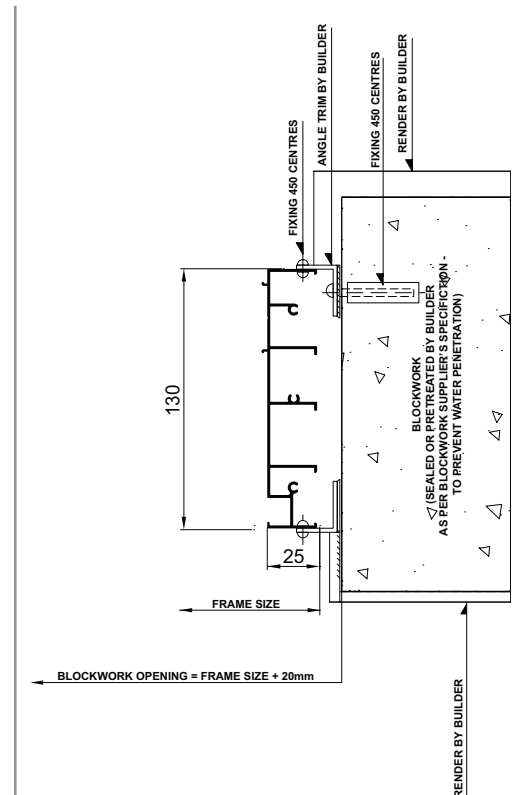
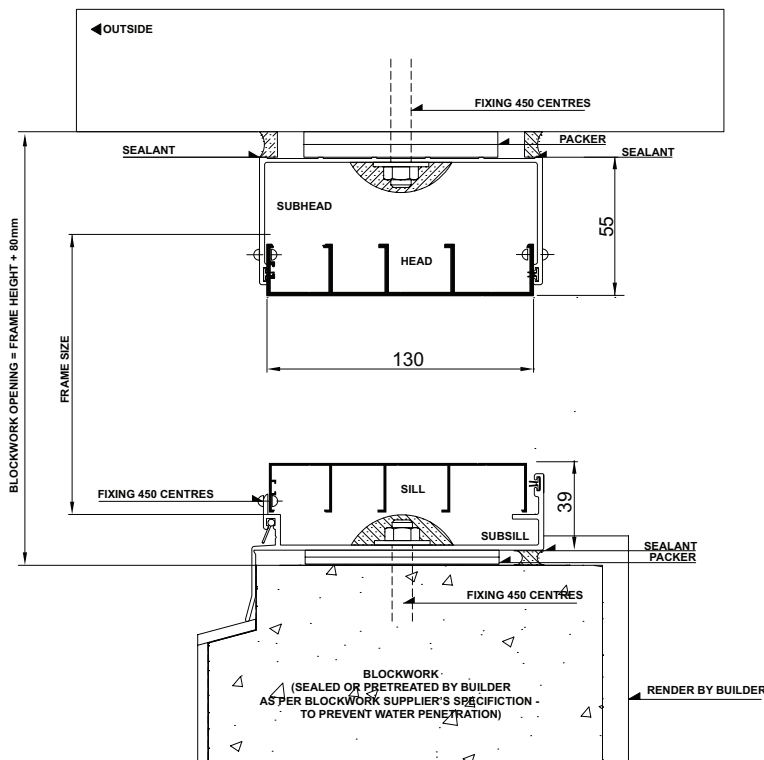
- Measure the frame opening to ensure that there is sufficient room for the product and additional packing.

**Blockwork Opening:**

Height = Frame Size + 80mm

Width = Frame Size + 20mm

- Fit subframe to opening and seal fixings.
- Seal ends of subsill with angle.
- Fit window to subframe (screw or pop-rivet).
- Do not permit weight of eaves or arch bars to bear on any window or door frame. **(Windows and doors are not load bearing.)**



# Louvre Window - Installation

Building In Detail | Hebel Power Panel



## INSTALLING FRAME CORRECTLY

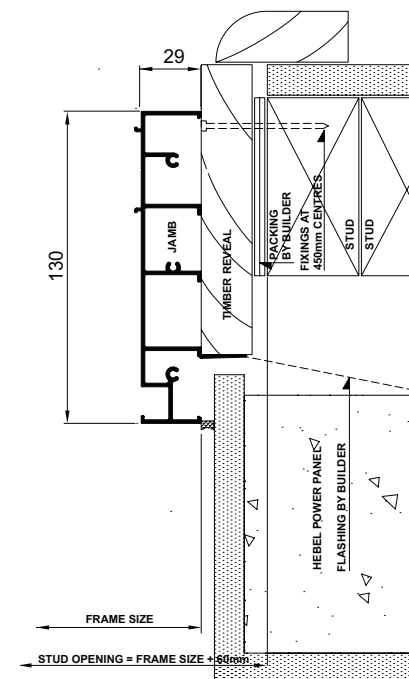
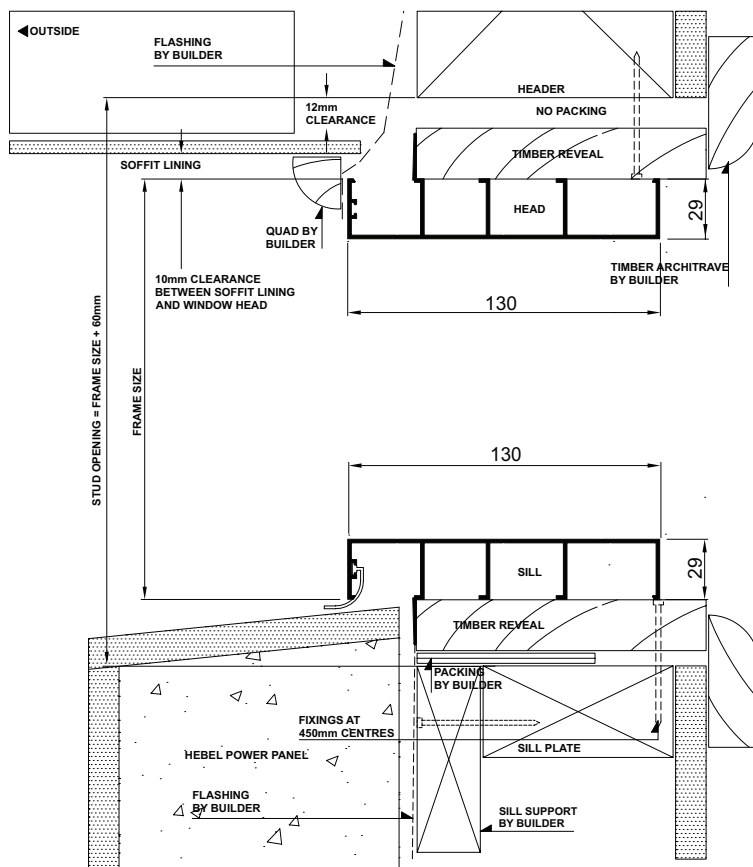
- Fit flashing to window surround (refer to drawing below).
- Measure the frame opening to ensure that there is sufficient room for the product and additional packing.

### Stud Opening:

Height = Frame Size + 60mm

Width = Frame Size + 60mm

- Secure aluminum windows by nailing through reveal into studwork - fixing at 450mm maximum centres.
- Caulk between render and frame.
- Header beam should be at least 12mm clear of window frame.
- Do not permit weight of eaves or arch bars to bear on any window or door frame. **(Windows and doors are not load bearing.)**
- To ensure the satisfactory long term performance of windows, install sill support (refer to drawings below).



Please note that drawings displayed are not to scale



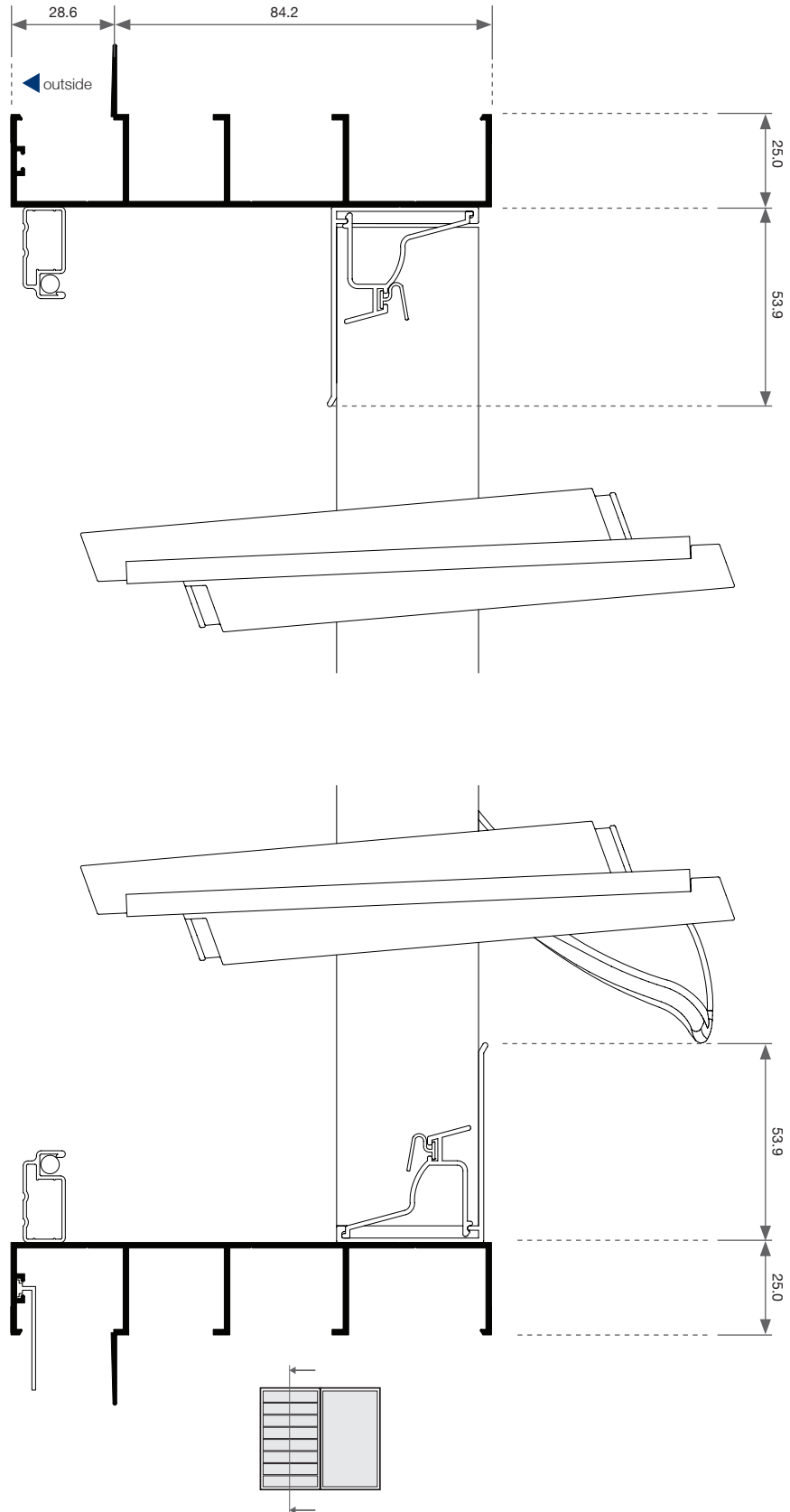
# Quantum<sup>®</sup> Louvre Window

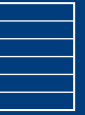
---

## Cross Sectional Views

## Louvre Window - Cross Sectional View

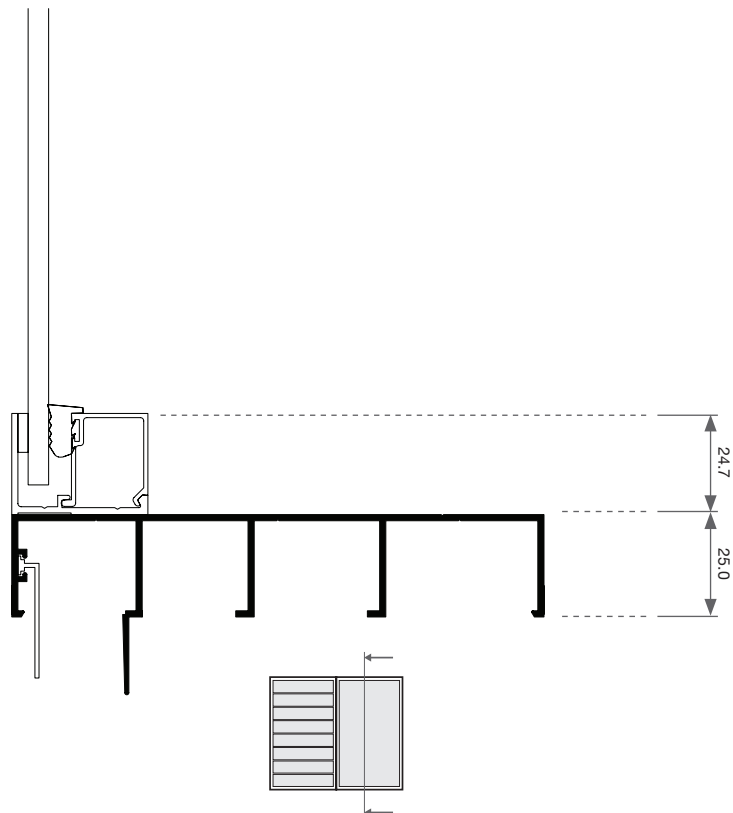
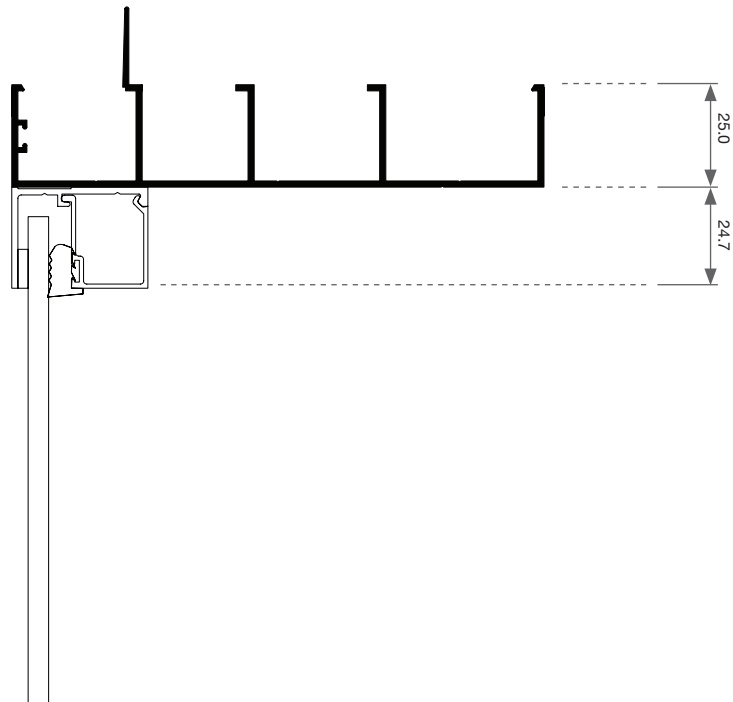
### Two Lite | Blades | Elevation





# Louvre Window - Cross Sectional View

Two Lite | Fixed Lite | Elevation



Please note that drawings displayed are not to scale

## Louvre Window - Cross Sectional View

Two Lite | Plan

