



Quantum[®] Hinge Door Features & Benefits

Hinge Door - Features & Benefits

FRAME

- Robust 102mm semi commercial aluminium door frame.

PANEL

- Durable hinged panels.
- Individual panels can measure up to 2400mm high (2700mm high in heavy duty panels) and up to 920 wide (1000mm wide in heavy duty panels).
- Single or paired french doors available.
- Sash punched holes are fitted with infill caps.
- Open-in and Open-out option available.

SILL

- Sill has built-in sump sill and no insect traps for easy maintenance and cleaning.

GLAZING & ENERGY EFFICIENCY

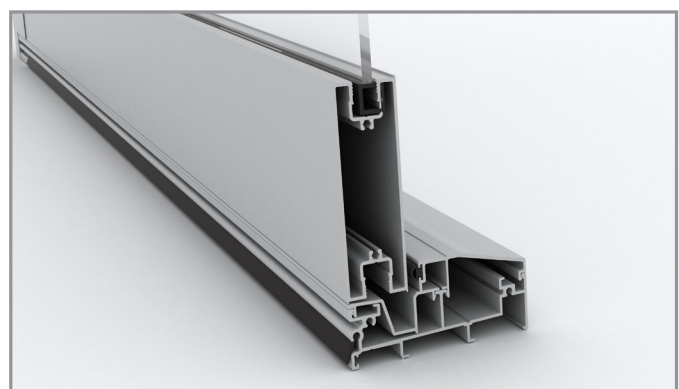
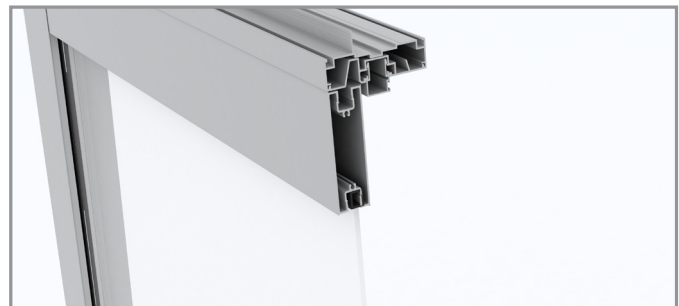
- All Trend® Windows and Doors comply with Australian Standards AS1288.
- Glazing options from 4mm single glazed to 18mm insulated glazed units (IGUs).
- Available in a range of glazing styles.
- Energy efficiency options available to help reduce home energy consumption.
- All glazing options are Window Energy Rating Scheme (WERS) rated - providing a wide range of energy efficient solutions.

ACOUSTICS

- Acoustic solutions available for improved noise reduction.
- High R_w ratings available.

WIND & WATER RATINGS

- All Trend® Windows and Doors are designed to meet and surpass 700Pa wind velocity rating and 150Pa water penetration rating and comply with Australian Standards AS2047.
- Pascal deflection rates up to 2200Pa.
- Hinge door rated at an air infiltration of 1.00L/s m².





Hinge Door - Features & Benefits

SECURITY

- **Infinity** night latch key lock hardware supplied as standard.
- Mortice lock mechanism pulls the door panels in tight in the center, top and bottom locking the doors securely.
- Optional security, barrier and **Prowler Proof** screens available.

BUSHFIRE

- Xtreme® Bushfire Protection option available*.
- Xtreme® options have been tested by CSIRO to meet BAL-40 - compliant to AS1530.8.1 within Australian Standards AS3959-2009.



HARDWARE

- **Infinity** Satin Chrome hardware supplied as standard
- **Infinity** hinge door lock include night latch feature - locking doors when handle is in vertical position.
- Four point locking to improve sealing supplied as standard.
- Optional colours available are:
 - Pearl White
 - Stone Beige
 - Anodic Natural Matt
 - Gloss Black
- Door locks can be keyed alike to other Quantum® products for ease of use.
- Hinges made out of durable stainless steel - optional black colour is also available.
- Parliament hinges available where door needs to be flush to the brickwork.
- Adjustable lift off hinge supplied as standard allows the door to be adjusted vertically and horizontally by up to 3mm.



OPTIONS

- Glazing options also available in bar layout styles:
 - Colonial
 - Federation
 - Ovolo glazing bar style*
- Wide range of powder coating colours.
- Customised WERS ratings.
- Variety of sizes and custom made options available.
- Variety of configuration options available.

* Ovolo available in single glazing only.



DELIVERY

- Protective wrapping for delivery to site comes standard for all Quantum® products.

Please note that drawings displayed are not to scale



Quantum[®] Hinge Door

Installation

Hinge Door - Installation

Building In Detail | Brick Veneer - 240mm wall



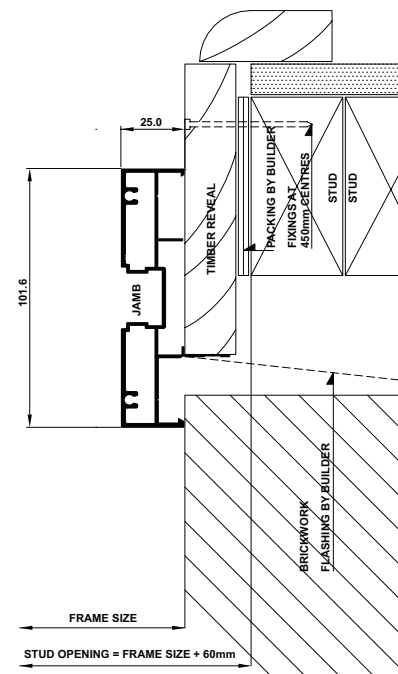
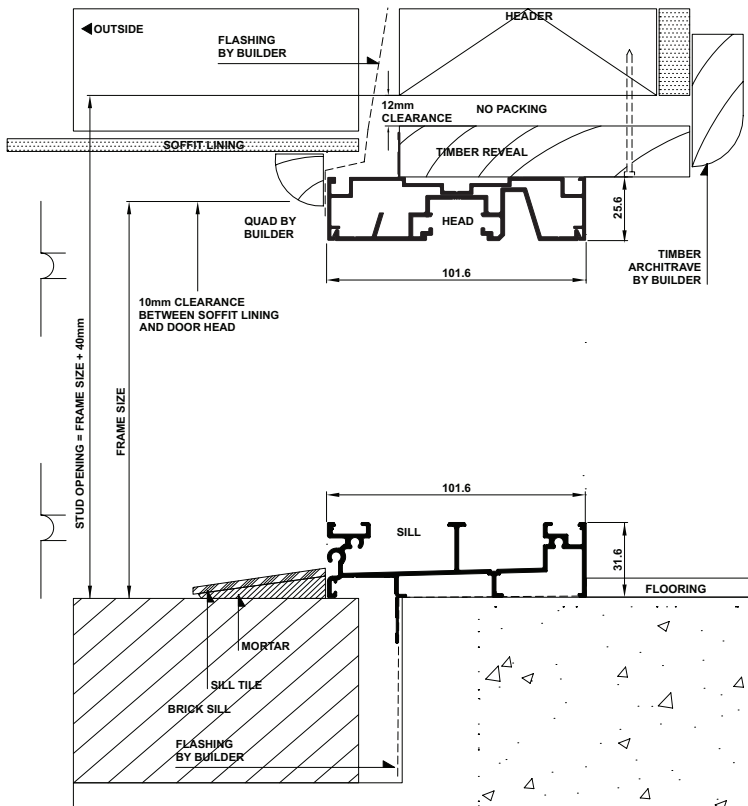
INSTALLING FRAME CORRECTLY

- Fit flashing to door surround (refer to drawing below).
- Measure the frame opening to ensure that there is sufficient room for the product and additional packing.

Stud Opening:

Height = Frame Size + 40mm
Width = Frame Size + 60mm

- Secure aluminum door by nailing through reveal into studwork - fixing at 450mm maximum centres.
- Sill bricks should be at least 10mm clear of door frame to allow settlement in brick veneer construction.
- Header beam should be at least 12mm clear of door frame.
- Do not permit weight of eaves or arch bars to bear on any window or door frame. **(Windows and doors are not load bearing.)**
- To ensure the satisfactory long term performance of doors, sill must be fully supported.
- Ensure outside finish does not block sill drainage holes.





Hinge Door - Installation

Building In Detail | Brick Veneer - 240mm wall | Sump Sill



INSTALLING FRAME CORRECTLY

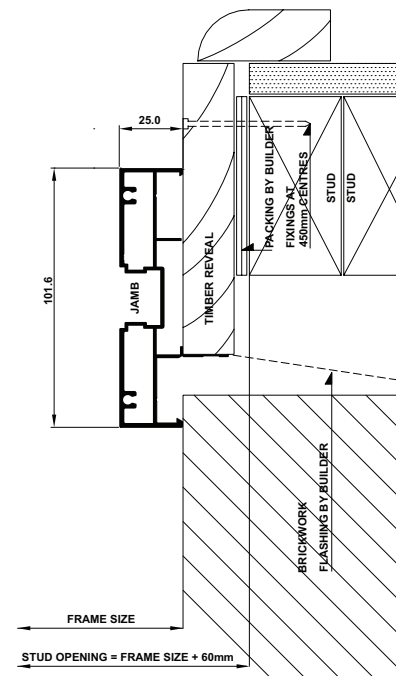
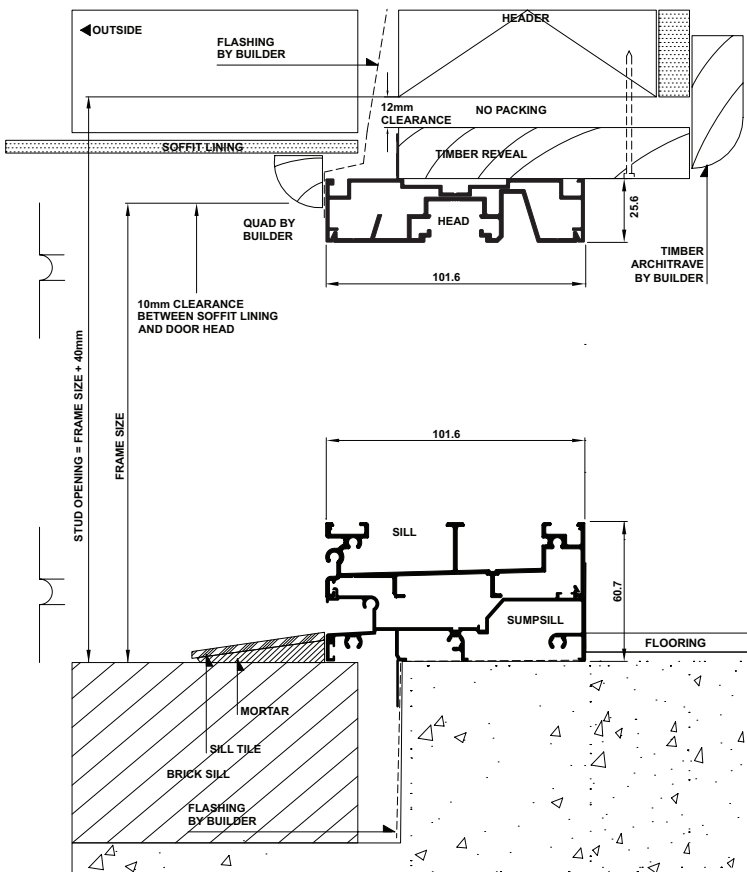
- Fit flashing to door surround (refer to drawing below).
- Measure the frame opening to ensure that there is sufficient room for the product and additional packing.

Stud Opening:

Height = Frame Size + 40mm

Width = Frame Size + 60mm

- Secure aluminum door by nailing through reveal into studwork - fixing at 450mm maximum centres.
- Sill bricks should be at least 10mm clear of door frame to allow settlement in brick veneer construction.
- Header beam should be at least 12mm clear of door frame.
- Do not permit weight of eaves or arch bars to bear on any window or door frame. **(Windows and doors are not load bearing.)**
- To ensure the satisfactory long term performance of doors, sill must be fully supported.
- Ensure outside finish does not block sill drainage holes.



Please note that drawings displayed are not to scale

Hinge Door - Installation

Building In Detail | Brick Veneer - 240mm wall | Rebated



INSTALLING FRAME CORRECTLY

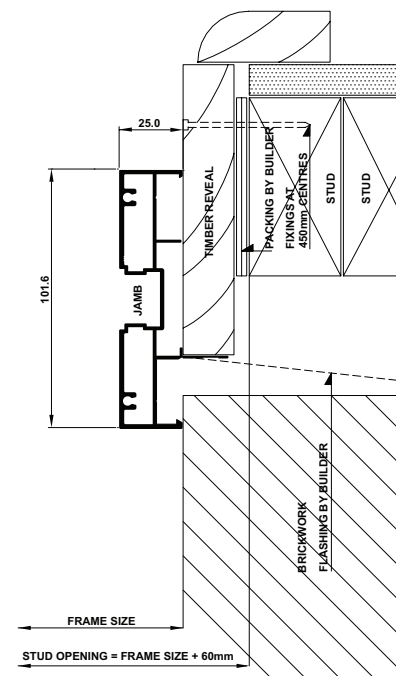
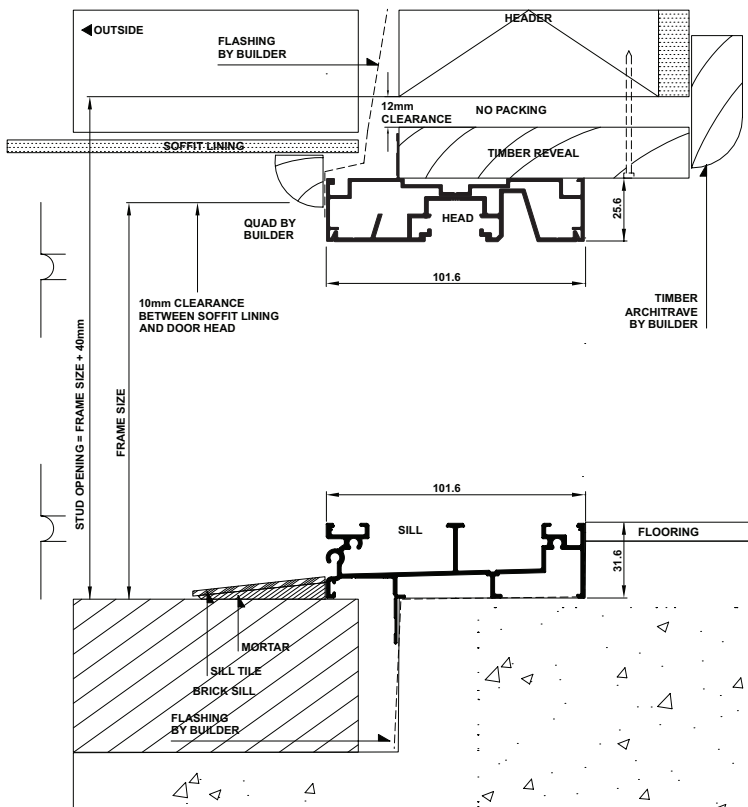
- Fit flashing to door surround (refer to drawing below).
- Measure the frame opening to ensure that there is sufficient room for the product and additional packing.

Stud Opening:

Height = Frame Size + 40mm

Width = Frame Size + 60mm

- Secure aluminum door by nailing through reveal into studwork - fixing at 450mm maximum centres.
- Sill bricks should be at least 10mm clear of door frame to allow settlement in brick veneer construction.
- Header beam should be at least 12mm clear of door frame.
- Do not permit weight of eaves or arch bars to bear on any window or door frame. **(Windows and doors are not load bearing.)**
- To ensure the satisfactory long term performance of doors, sill must be fully supported.
- Ensure outside finish does not block sill drainage holes.



Hinge Door - Installation

Building In Detail | Brick Veneer - 240mm wall | Rebated | Sump Sill



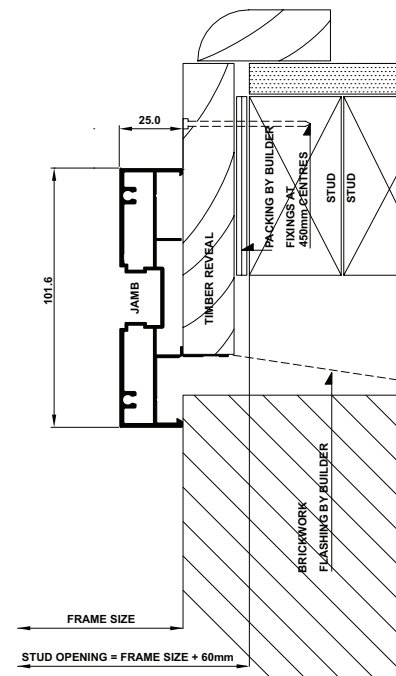
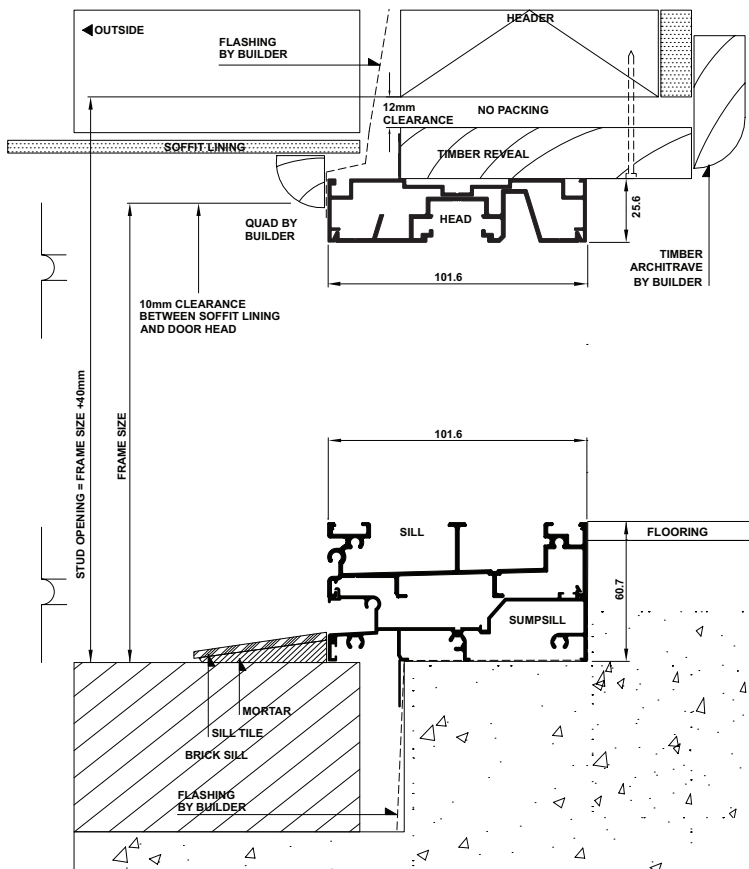
INSTALLING FRAME CORRECTLY

- Fit flashing to door surround (refer to drawing below).
- Measure the frame opening to ensure that there is sufficient room for the product and additional packing.

Stud Opening:

Height = Frame Size + 40mm
Width = Frame Size + 60mm

- Secure aluminum door by nailing through reveal into studwork - fixing at 450mm maximum centres.
- Sill bricks should be at least 10mm clear of door frame to allow settlement in brick veneer construction.
- Header beam should be at least 12mm clear of door frame.
- Do not permit weight of eaves or arch bars to bear on any window or door frame. **(Windows and doors are not load bearing.)**
- To ensure the satisfactory long term performance of doors, sill must be fully supported.
- Ensure outside finish does not block sill drainage holes.



Please note that drawings displayed are not to scale

Hinge Door - Installation

Building In Detail | Brick Veneer - 240mm wall | Joists



INSTALLING FRAME CORRECTLY

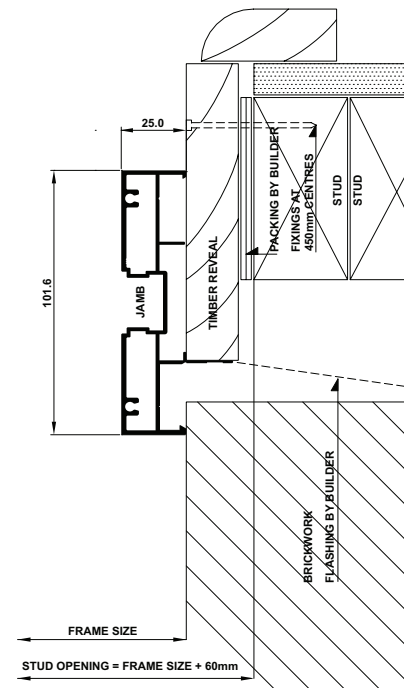
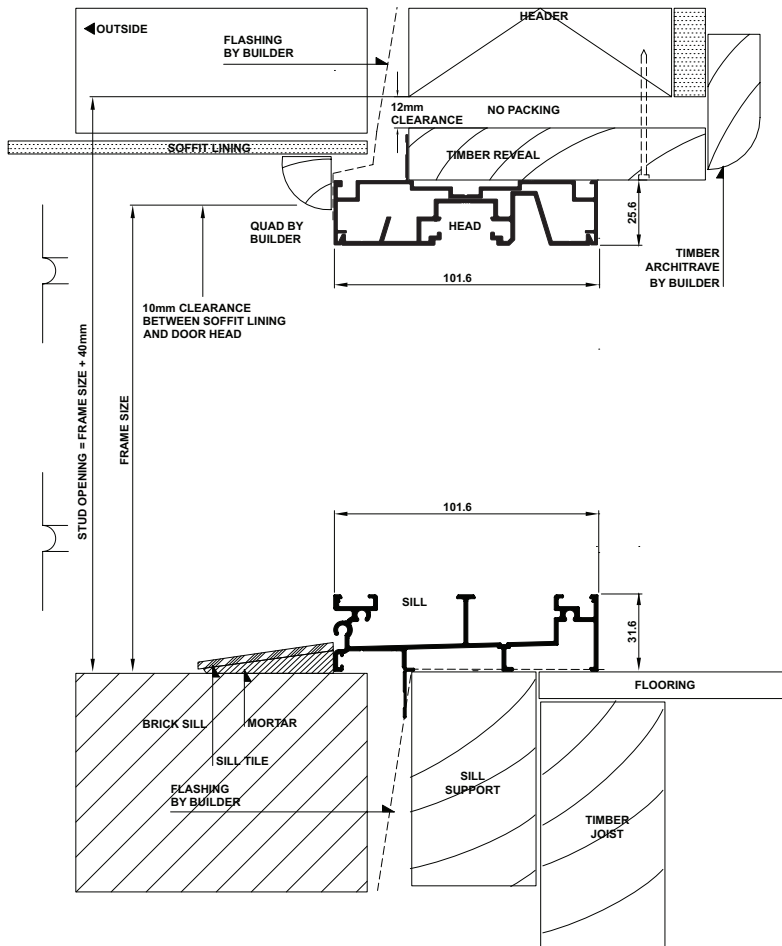
- Fit flashing to door surround (refer to drawing below).
- Measure the frame opening to ensure that there is sufficient room for the product and additional packing.

Stud Opening:

Height = Frame Size + 40mm

Width = Frame Size + 60mm

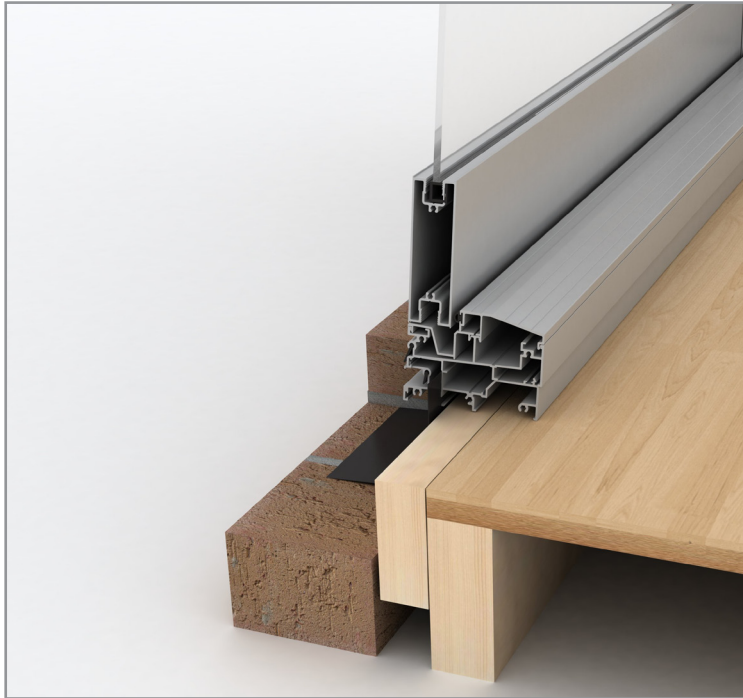
- Secure aluminum door by nailing through reveal into studwork - fixing at 450mm maximum centres.
- Sill bricks should be at least 10mm clear of door frame to allow settlement in brick veneer construction.
- Header beam should be at least 12mm clear of door frame.
- Do not permit weight of eaves or arch bars to bear on any window or door frame. **(Windows and doors are not load bearing.)**
- To ensure the satisfactory long term performance of doors, sill must be fully supported.
- Ensure outside finish does not block sill drainage holes.



Hinge Door - Installation



Building In Detail | Brick Veneer - 240mm wall | Joists | Sump Sill



INSTALLING FRAME CORRECTLY

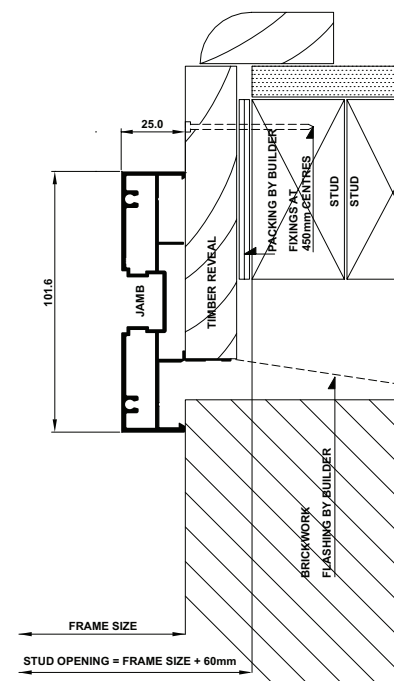
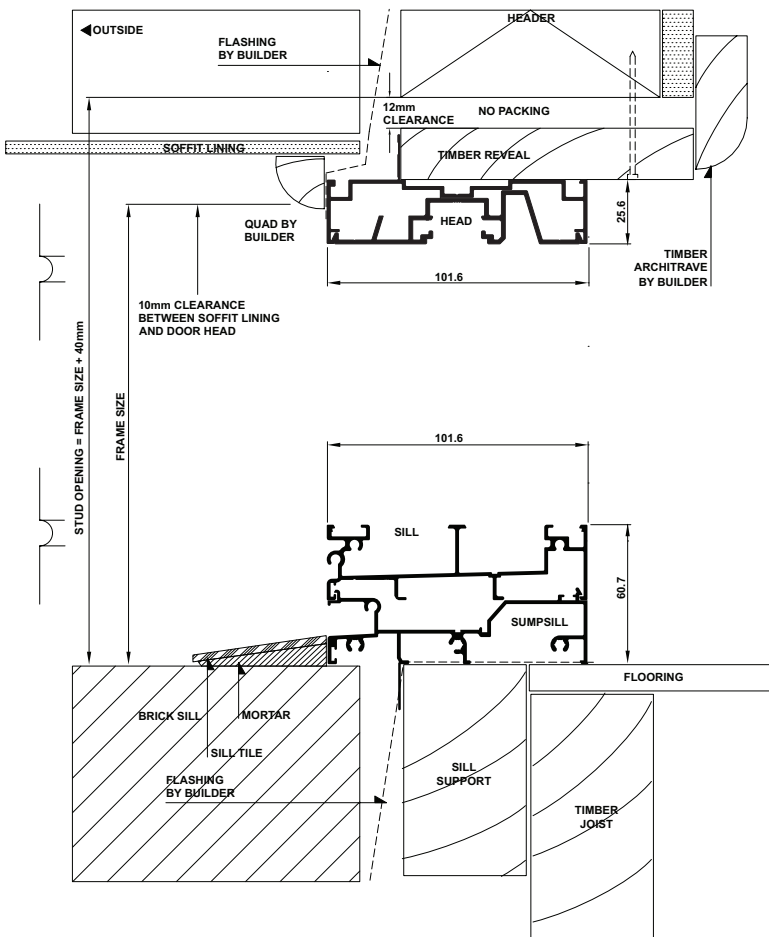
- Fit flashing to door surround (refer to drawing below).
- Measure the frame opening to ensure that there is sufficient room for the product and additional packing.

Stud Opening:

Height = Frame Size + 40mm

Width = Frame Size + 60mm

- Secure aluminum door by nailing through reveal into studwork - fixing at 450mm maximum centres.
- Sill bricks should be at least 10mm clear of door frame to allow settlement in brick veneer construction.
- Header beam should be at least 12mm clear of door frame.
- Do not permit weight of eaves or arch bars to bear on any window or door frame. **(Windows and doors are not load bearing.)**
- To ensure the satisfactory long term performance of doors, sill must be fully supported.
- Ensure outside finish does not block sill drainage holes.



Please note that drawings displayed are not to scale

Hinge Door - Installation

Building In Detail | Double Brick - 280mm wall



INSTALLING FRAME CORRECTLY

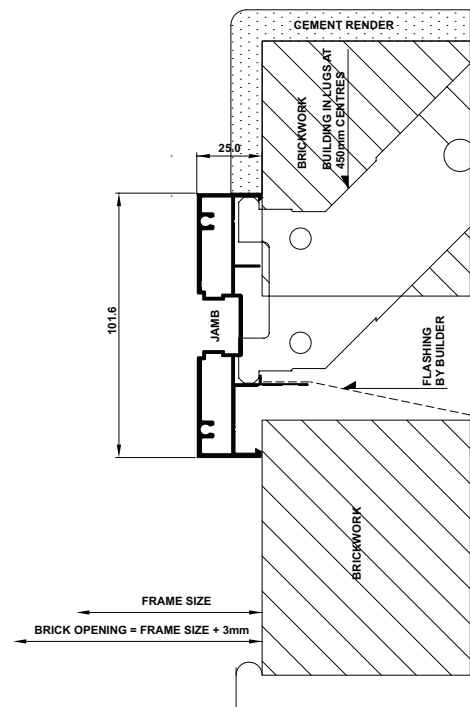
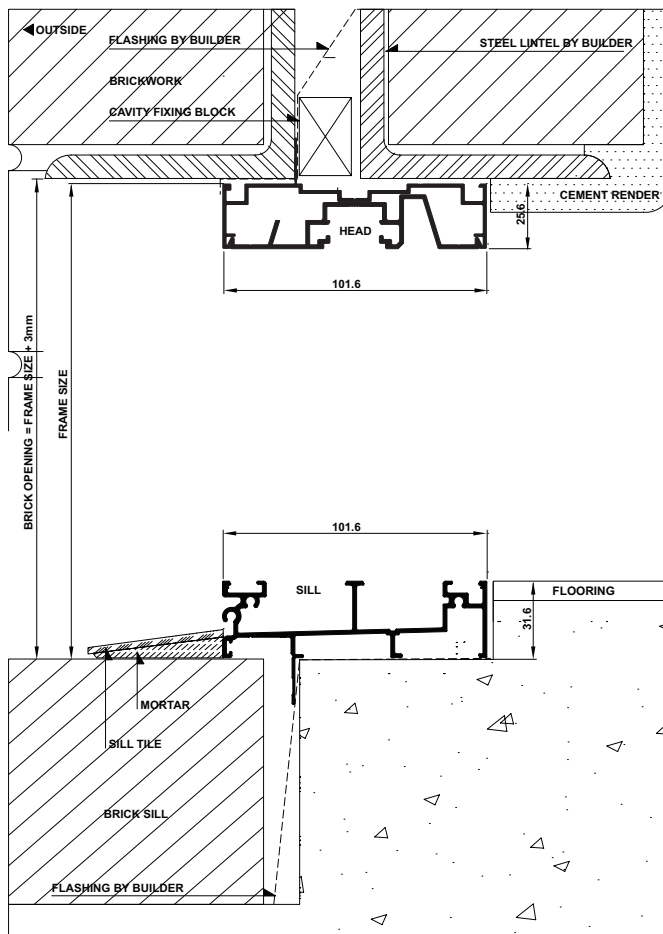
- Fit flashing to door surround (refer to drawing below).
- Measure the frame opening to ensure that there is sufficient room for the product and additional packing.

Stud Opening:

Height = Frame Size + 3mm

Width = Frame Size + 3mm

- Secure aluminum door by nailing through reveal into studwork - fixing at 450mm maximum centres.
- Header beam should be at least 12mm clear of window frame.
- Do not permit weight of eaves or arch bars to bear on any window or door frame. **(Windows and doors are not load bearing.)**
- To ensure the satisfactory long term performance of doors, sill must be fully supported.
- Ensure outside finish does not block sill drainage holes.

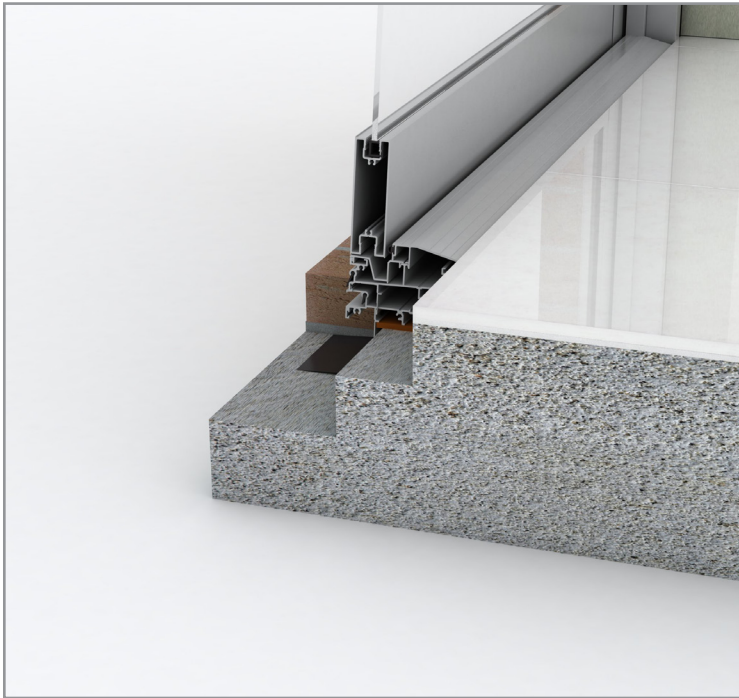


Please note that drawings displayed are not to scale



Hinge Door - Installation

Building In Detail | Double Brick - 280mm wall | Sump Sill



INSTALLING FRAME CORRECTLY

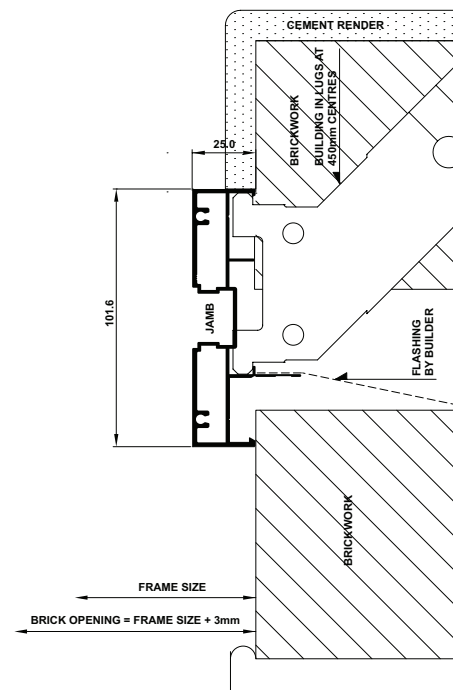
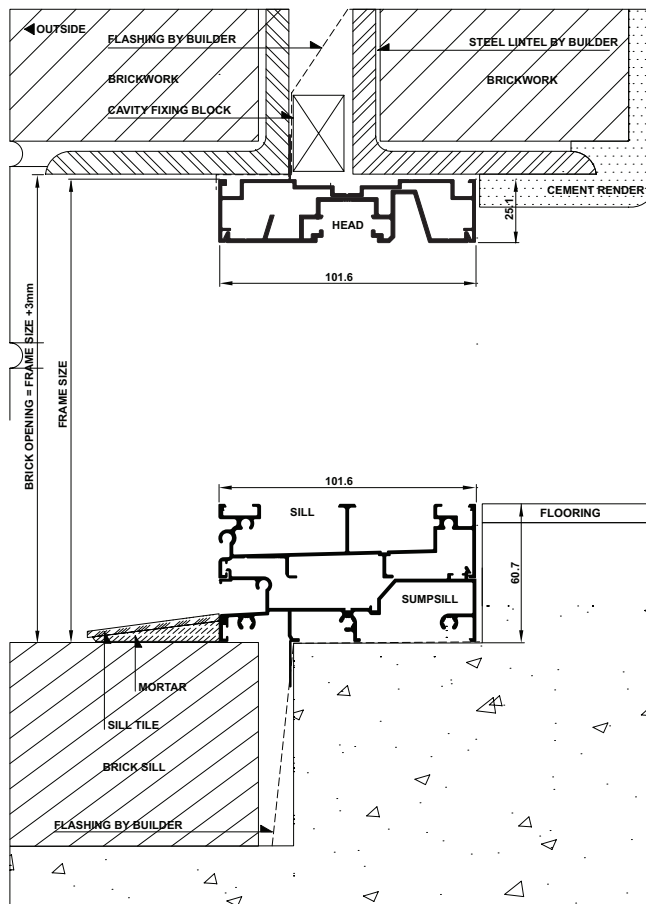
- Fit flashing to door surround (refer to drawing below).
- Measure the frame opening to ensure that there is sufficient room for the product and additional packing.

Stud Opening:

Height = Frame Size + 3mm

Width = Frame Size + 3mm

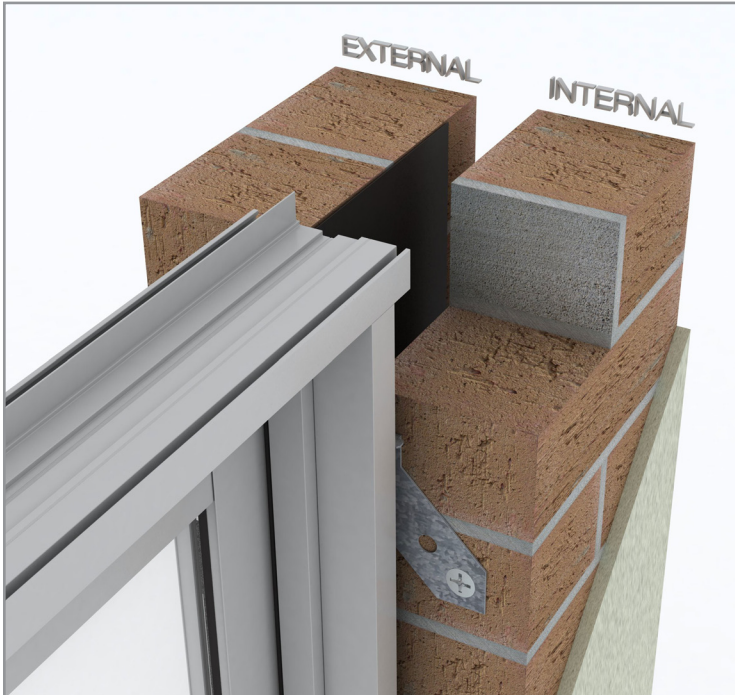
- Secure aluminum door by nailing through reveal into studwork - fixing at 450mm maximum centres.
- Header beam should be at least 12mm clear of window frame.
- Do not permit weight of eaves or arch bars to bear on any window or door frame. **(Windows and doors are not load bearing.)**
- To ensure the satisfactory long term performance of doors, sill must be fully supported.
- Ensure outside finish does not block sill drainage holes.



Please note that drawings displayed are not to scale

Hinge Door - Installation

Building In Detail | Double Brick - 280mm wall | Prepared Opening



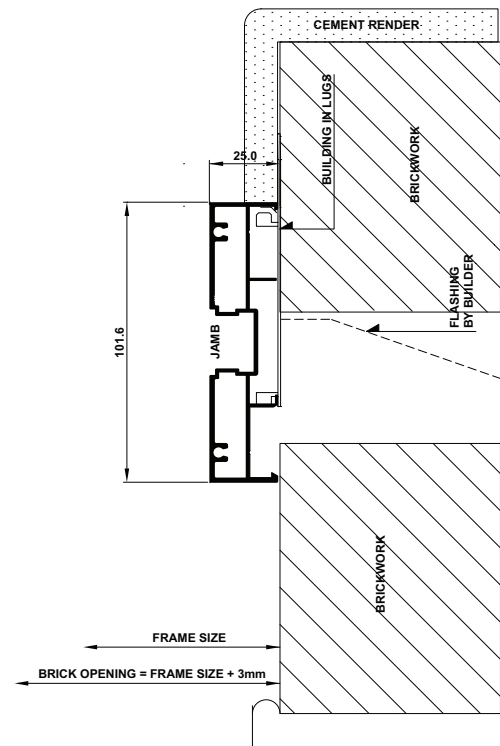
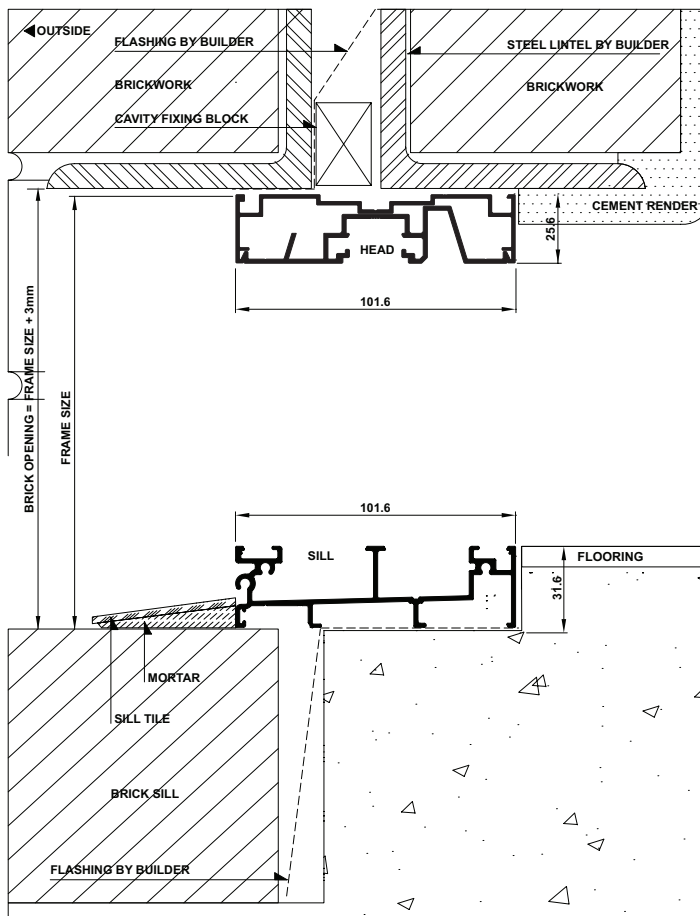
INSTALLING FRAME CORRECTLY

- Fit flashing to door surround (refer to drawing below).
- Measure the frame opening to ensure that there is sufficient room for the product and additional packing.

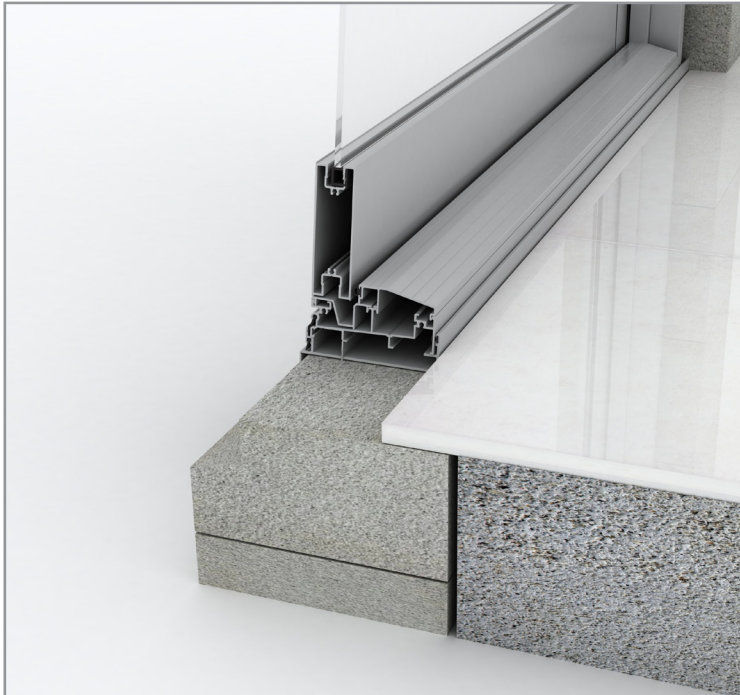
Brick Opening:

Height = Frame Size + 3mm
Width = Frame Size + 3mm

- Secure aluminum doors using building lug into mortar - fixing at 450mm max centres
- Sill bricks should be at least 10 mm clear of window frame.
- Do not permit weight of eaves or arch bars to bear on any window or door frame. **(Windows and doors are not load bearing.)**
- To ensure the satisfactory long term performance of doors, sill must be fully supported.
- Ensure outside finish does not block sill drainage holes.



Please note that drawings displayed are not to scale



INSTALLING FRAME CORRECTLY

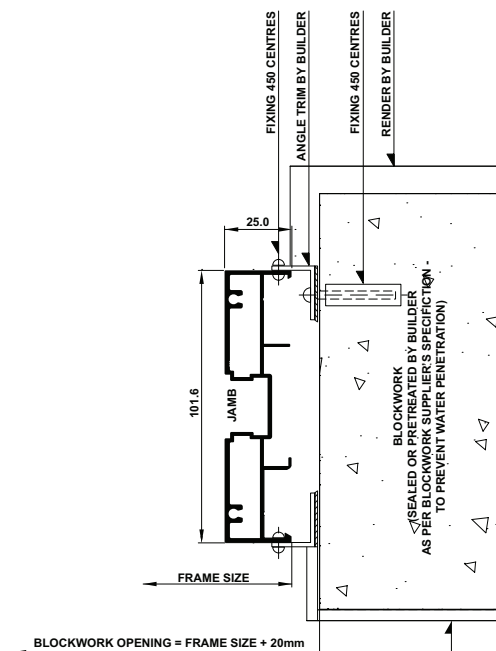
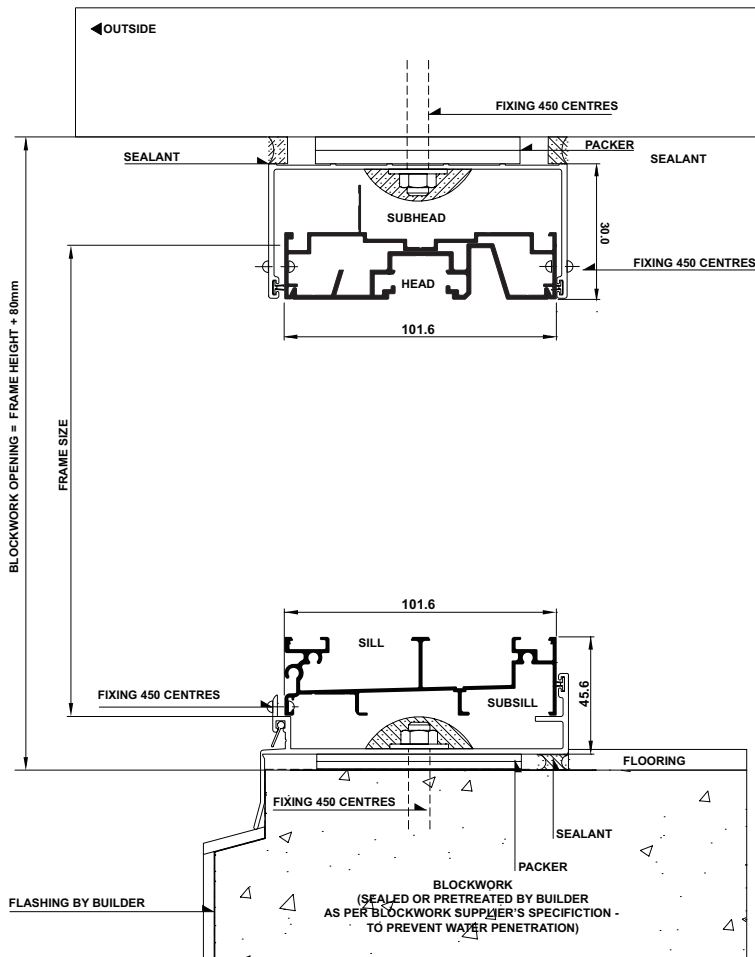
- Measure the frame opening to ensure that there is sufficient room for the product and additional packing.

Blockwork Opening:

Height = Frame Size + 80mm

Width = Frame Size + 20mm

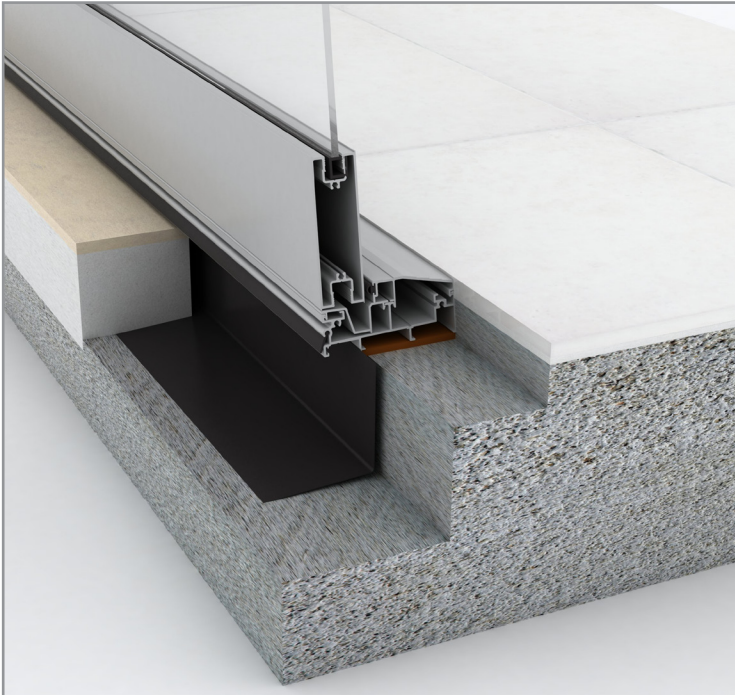
- Fit subframe to opening and seal fixings.
- Fit window to subframe (screw or pop-rivet).
- Do not permit weight of eaves or arch bars to bear on any window or door frame. **(Windows and doors are not load bearing.)**
- To ensure the satisfactory long term performance of doors, sill must be fully supported.
- Ensure outside finish does not block sill drainage holes.



Please note that drawings displayed are not to scale

Hinge Door - Installation

Building In Detail | Cladding on Studwall



INSTALLING FRAME CORRECTLY

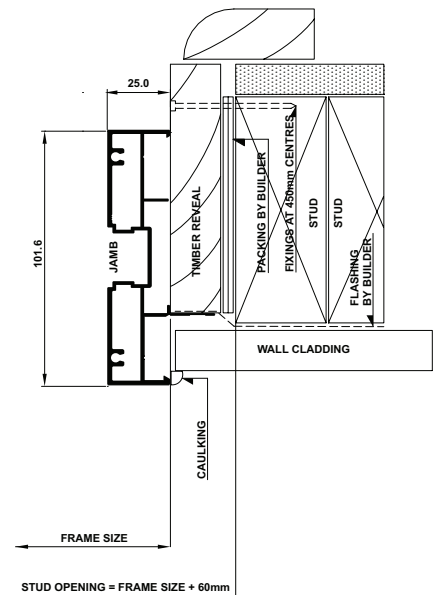
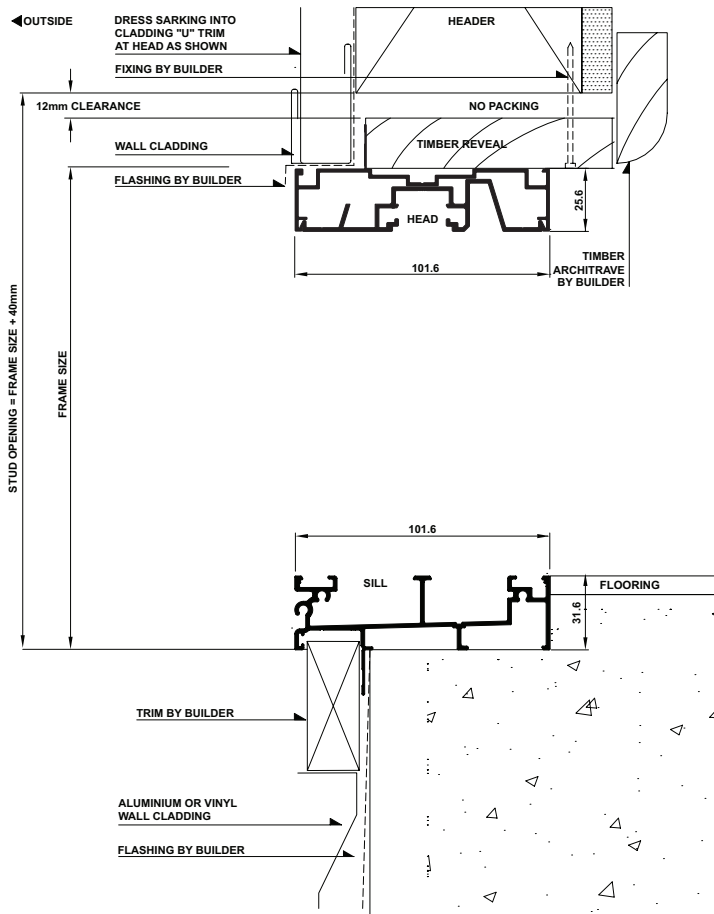
- Fit flashing to door surround (refer to drawing below).
- Measure the frame opening to ensure that there is sufficient room for the product and additional packing.

Stud Opening:

Height = Frame Size + 40mm

Width = Frame Size + 60mm

- Secure aluminum door by nailing through reveal into studwork - fixing at 450mm maximum centres.
- Header beam should be at least 12mm clear of window frame.
- Do not permit weight of eaves or arch bars to bear on any window or door frame. **(Windows and doors are not load bearing.)**
- To ensure the satisfactory long term performance of doors, install sill support (refer to drawings below).
- Ensure outside finish does not block sill drainage holes.

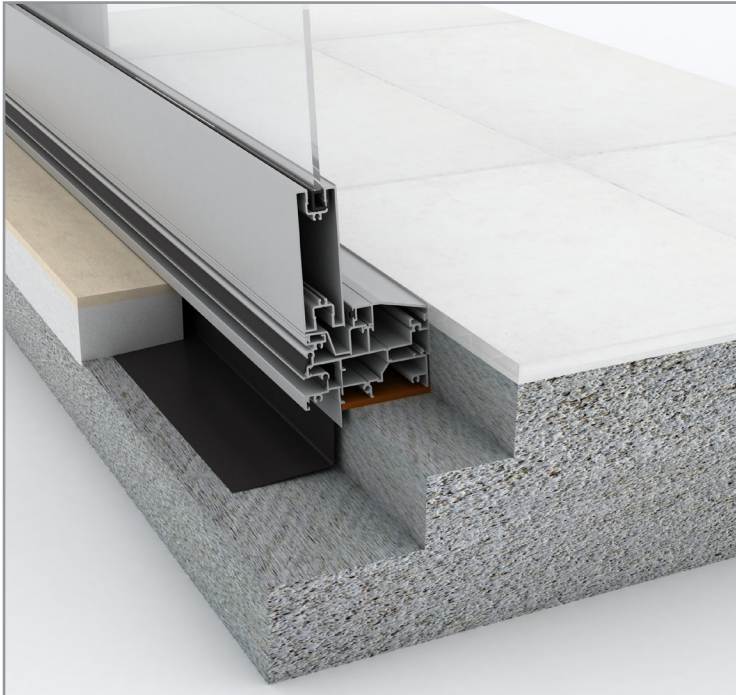




Hinge Door - Installation

Building In Detail | Cladding on Studwall | Sump Sill

INSTALLING FRAME CORRECTLY



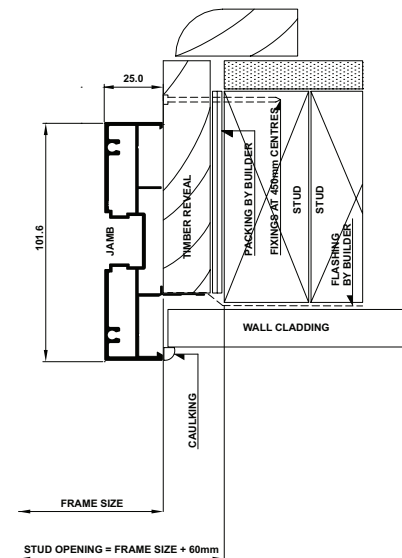
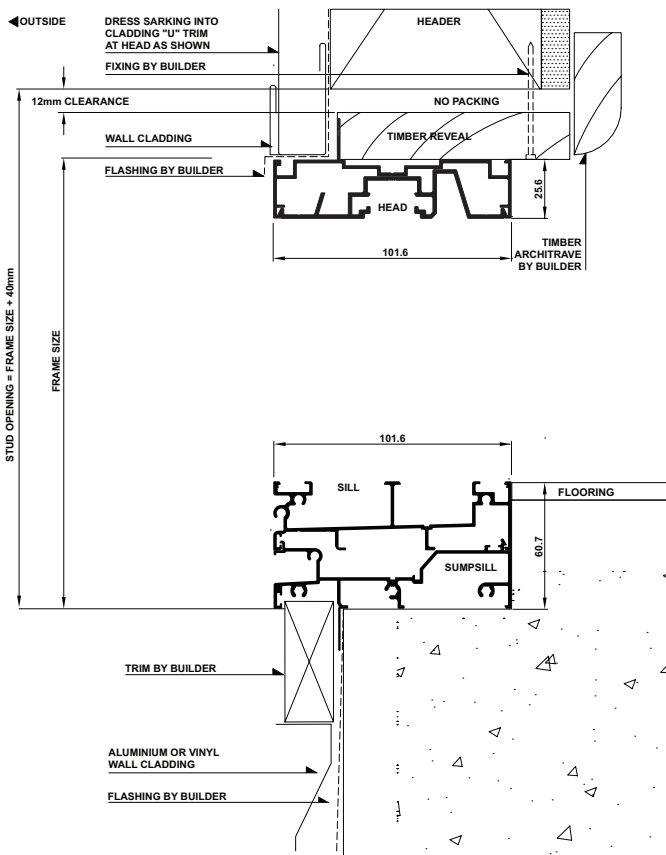
- Fit flashing to door surround (refer to drawing below).
- Measure the frame opening to ensure that there is sufficient room for the product and additional packing.

Stud Opening:

Height = Frame Size + 40mm

Width = Frame Size + 60mm

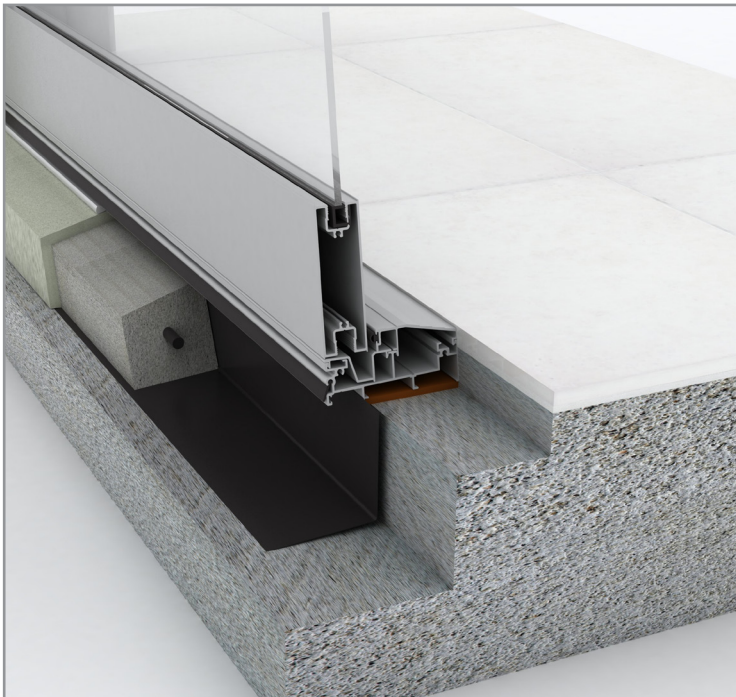
- Secure aluminum door by nailing through reveal into studwork - fixing at 450mm maximum centres.
- Header beam should be at least 12mm clear of window frame.
- Do not permit weight of eaves or arch bars to bear on any window or door frame. **(Windows and doors are not load bearing.)**
- To ensure the satisfactory long term performance of doors install sill support (refer to drawings below).
- Ensure outside finish does not block sill drainage holes.



Please note that drawings displayed are not to scale

Hinge Door - Installation

Building In Detail | Hebel Power Panel



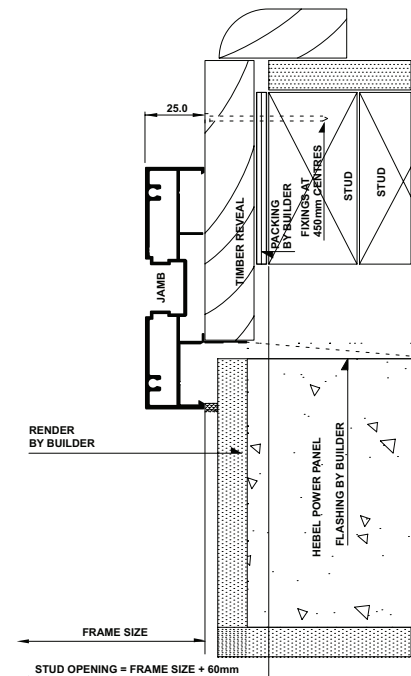
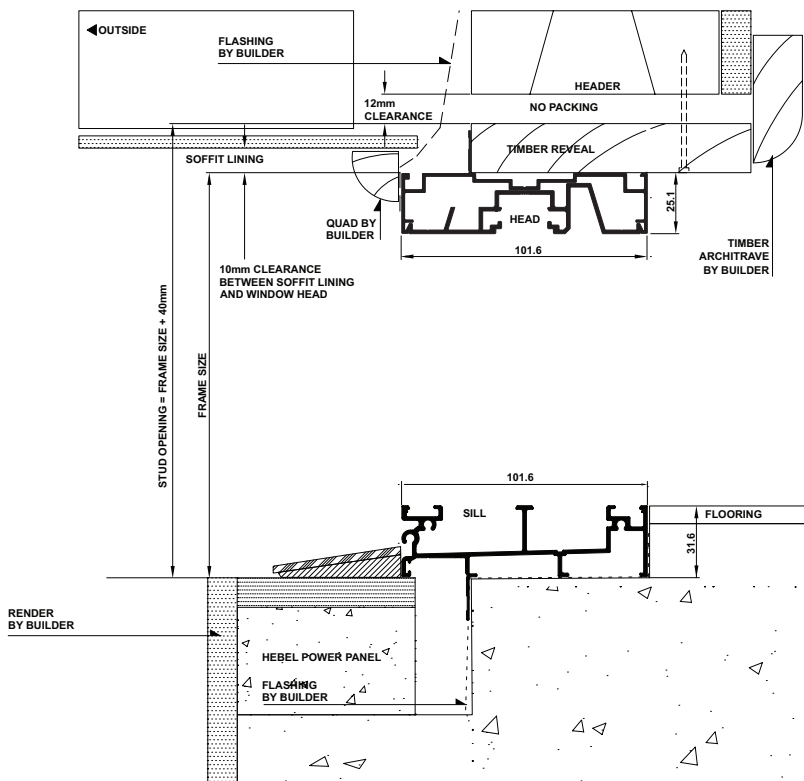
INSTALLING FRAME CORRECTLY

- Fit flashing to door surround (refer to drawing below).
- Measure the frame opening to ensure that there is sufficient room for the product and additional packing.

Stud Opening:

Height = Frame Size + 40mm
Width = Frame Size + 60mm

- Secure aluminum door by nailing through reveal into studwork - fixing at 450mm maximum centres.
- Header beam should be at least 12mm clear of window frame.
- Do not permit weight of eaves or arch bars to bear on any window or door frame. **(Windows and doors are not load bearing.)**
- To ensure the satisfactory long term performance of doors, sill must be fully supported.
- Ensure outside finish does not block sill drainage holes.



Hinge Door - Installation

Building In Detail | Hebel Power Panel | Sump Sill



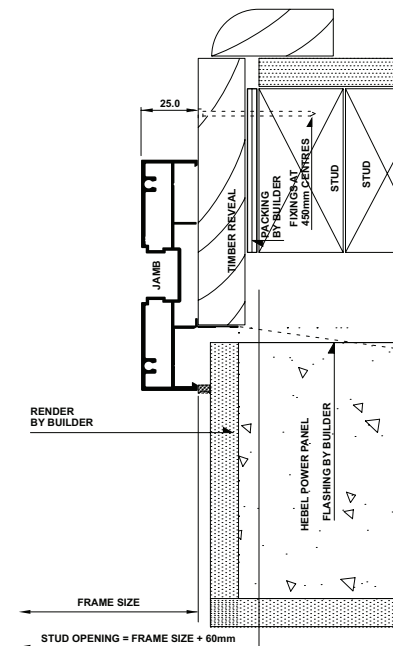
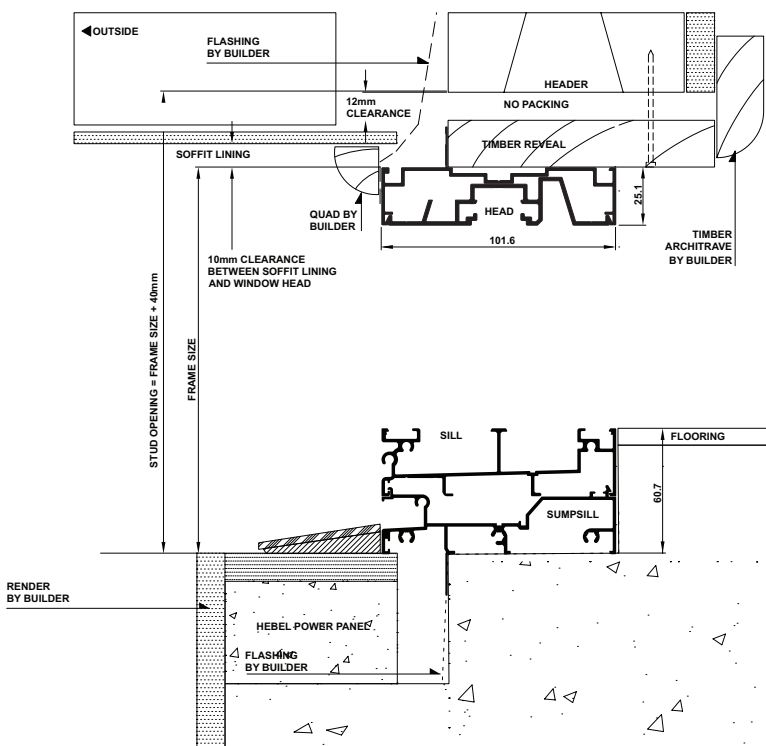
INSTALLING FRAME CORRECTLY

- Fit flashing to door surround (refer to drawing below).
- Measure the frame opening to ensure that there is sufficient room for the product and additional packing.

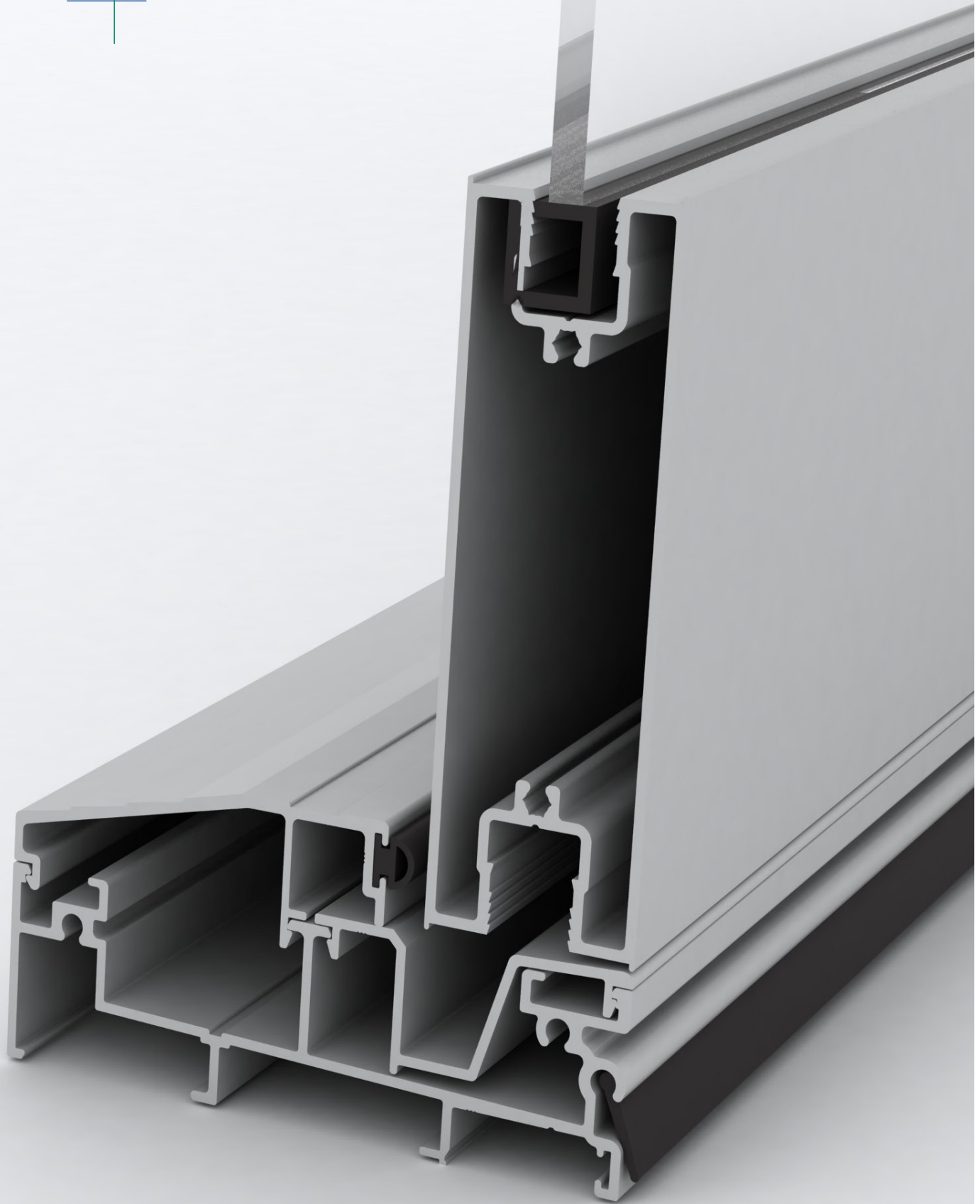
Stud Opening:

Height = Frame Size + 40mm
Width = Frame Size + 60mm

- Secure aluminum door by nailing through reveal into studwork - fixing at 450mm maximum centres.
- Header beam should be at least 12mm clear of window frame.
- Do not permit weight of eaves or arch bars to bear on any window or door frame. **(Windows and doors are not load bearing.)**
- To ensure the satisfactory long term performance of doors, sill must be fully supported.
- Ensure outside finish does not block sill drainage holes.



Please note that drawings displayed are not to scale

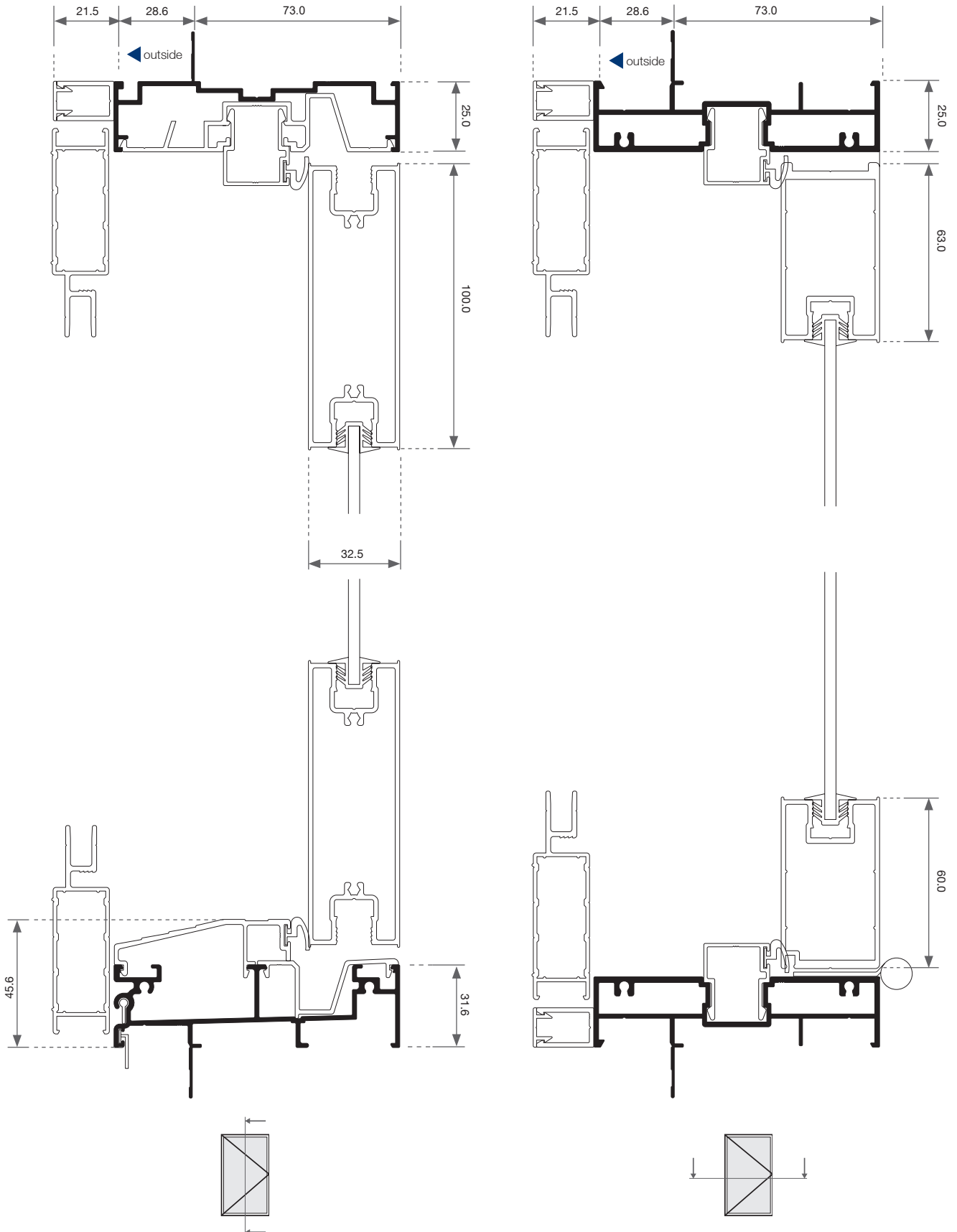


Quantum[®] Hinge Door

Cross Sectional Views

Hinge Door - Cross Sectional View

Single | Open In

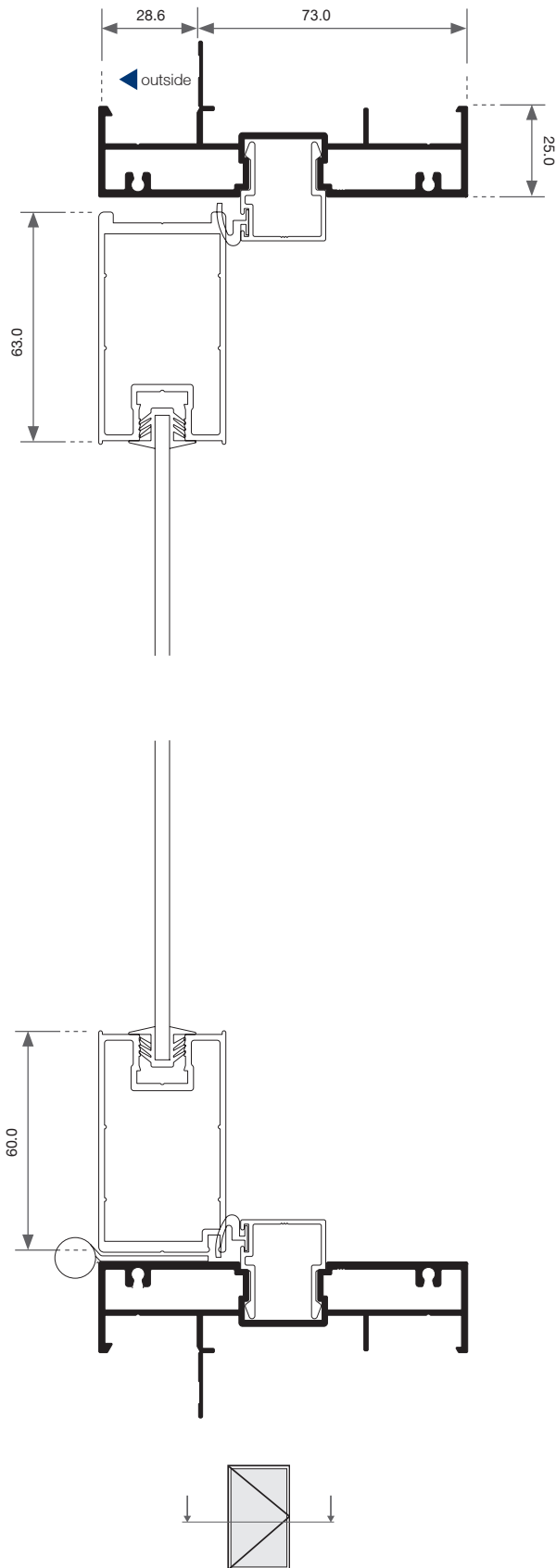
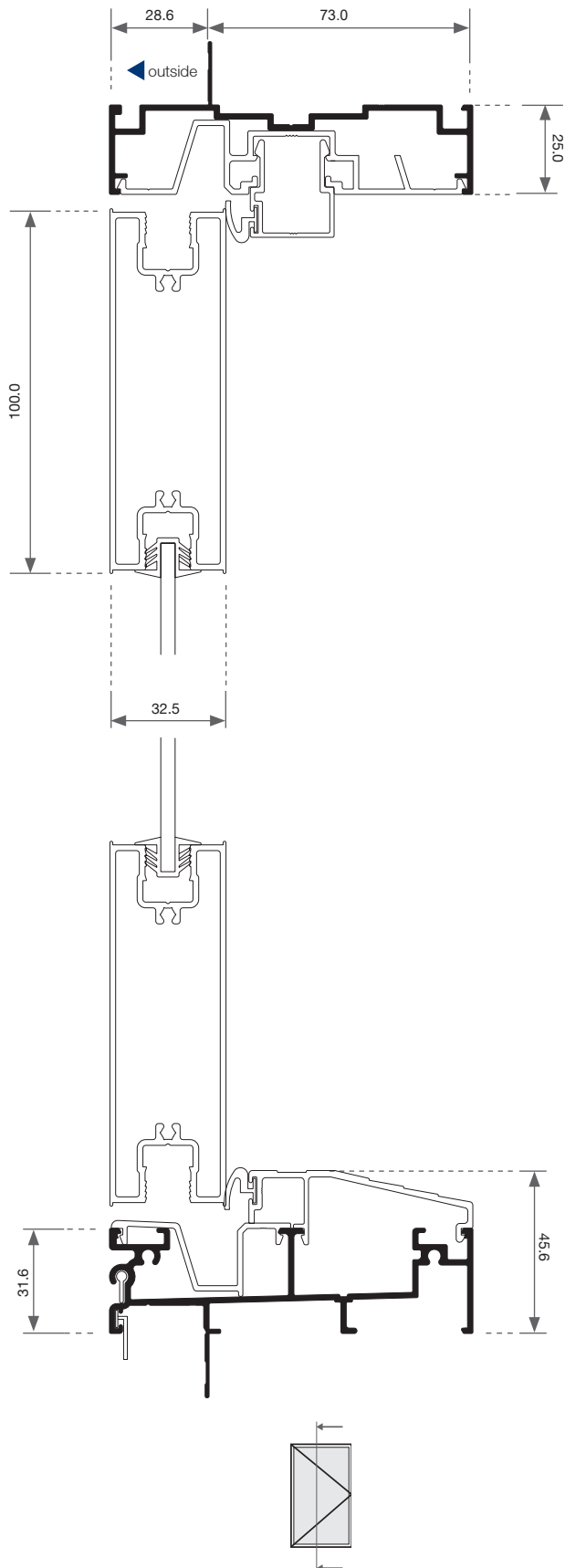


Please note that drawings displayed are not to scale

Hinge Door - Cross Sectional View



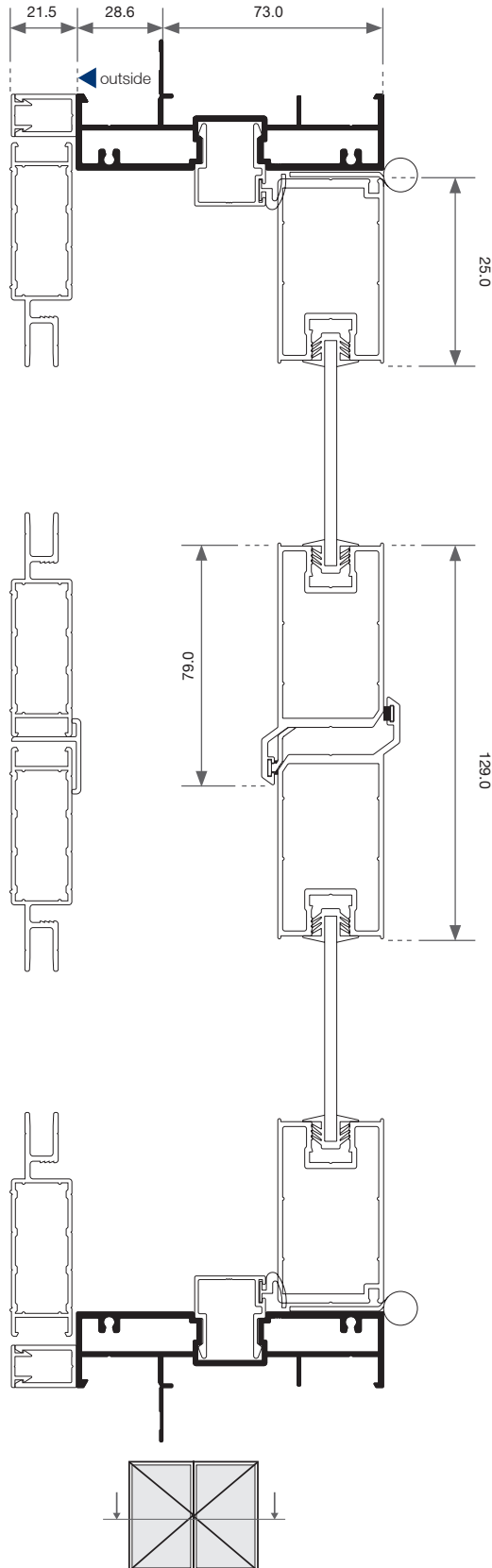
Single | Open Out



Please note that drawings displayed are not to scale

Hinge Door - Cross Sectional View

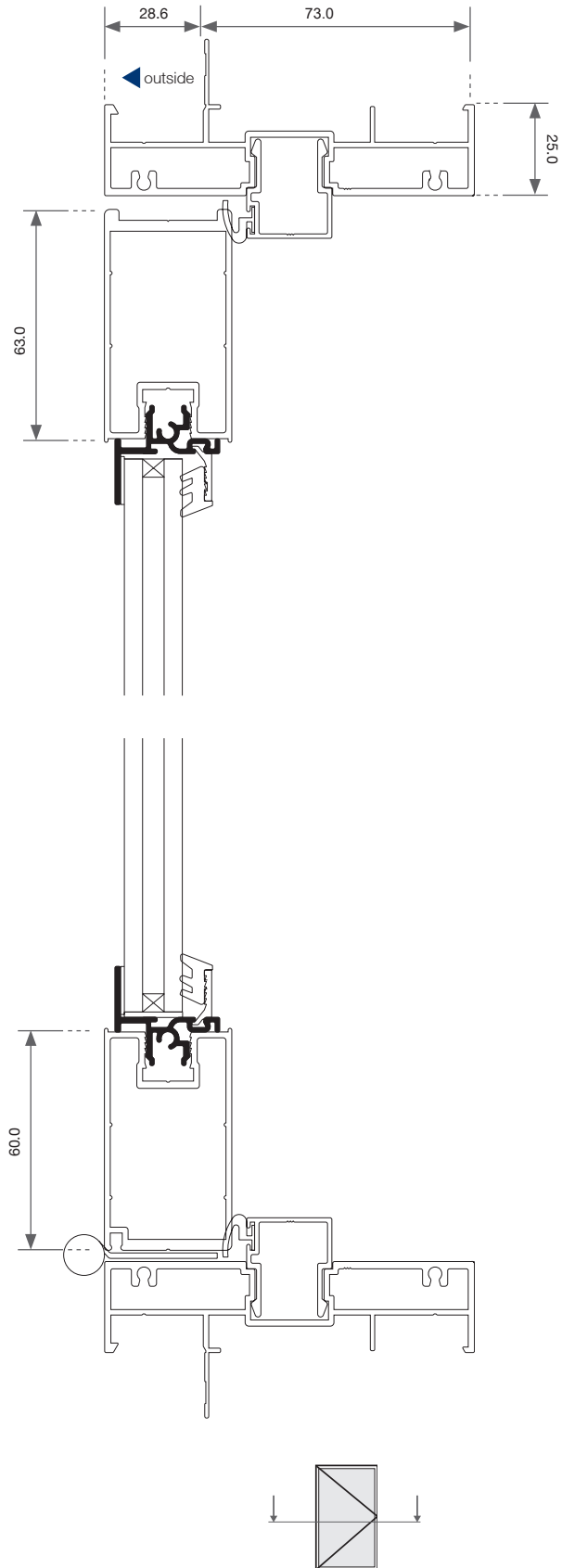
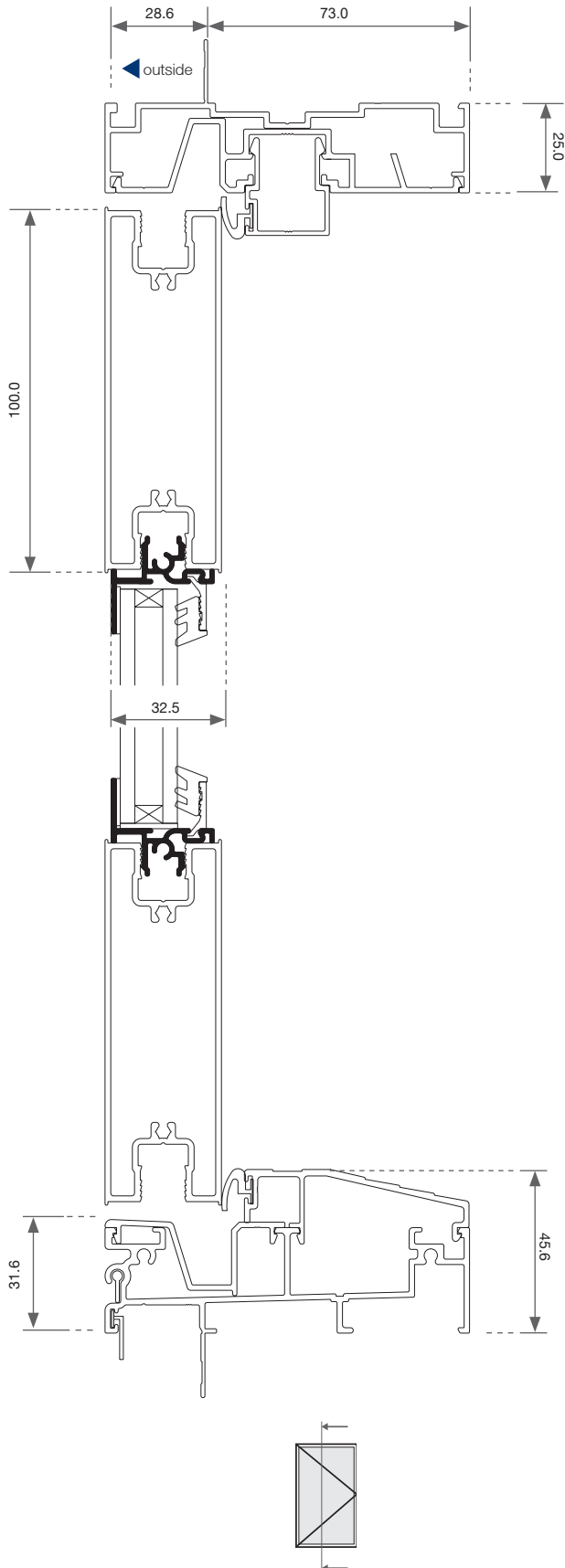
Pair | Open In



Hinge Door - Cross Sectional View



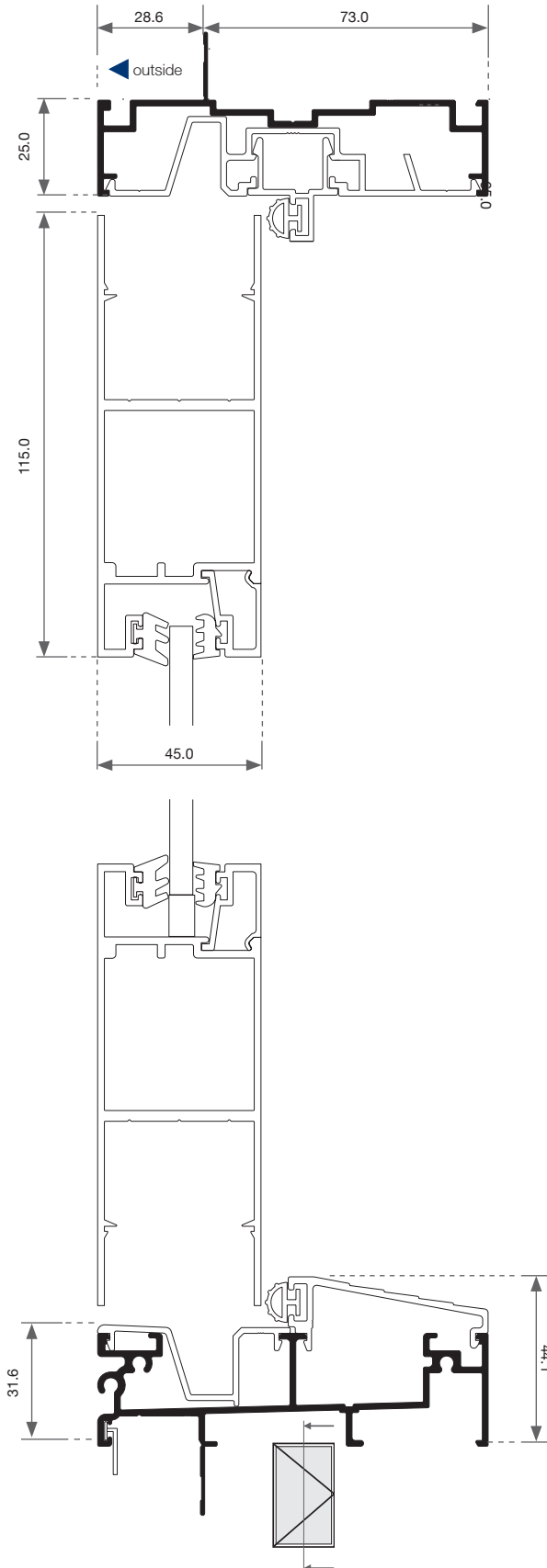
Single | Double Glazed



Please note that drawings displayed are not to scale

Hinge Door - Cross Sectional View

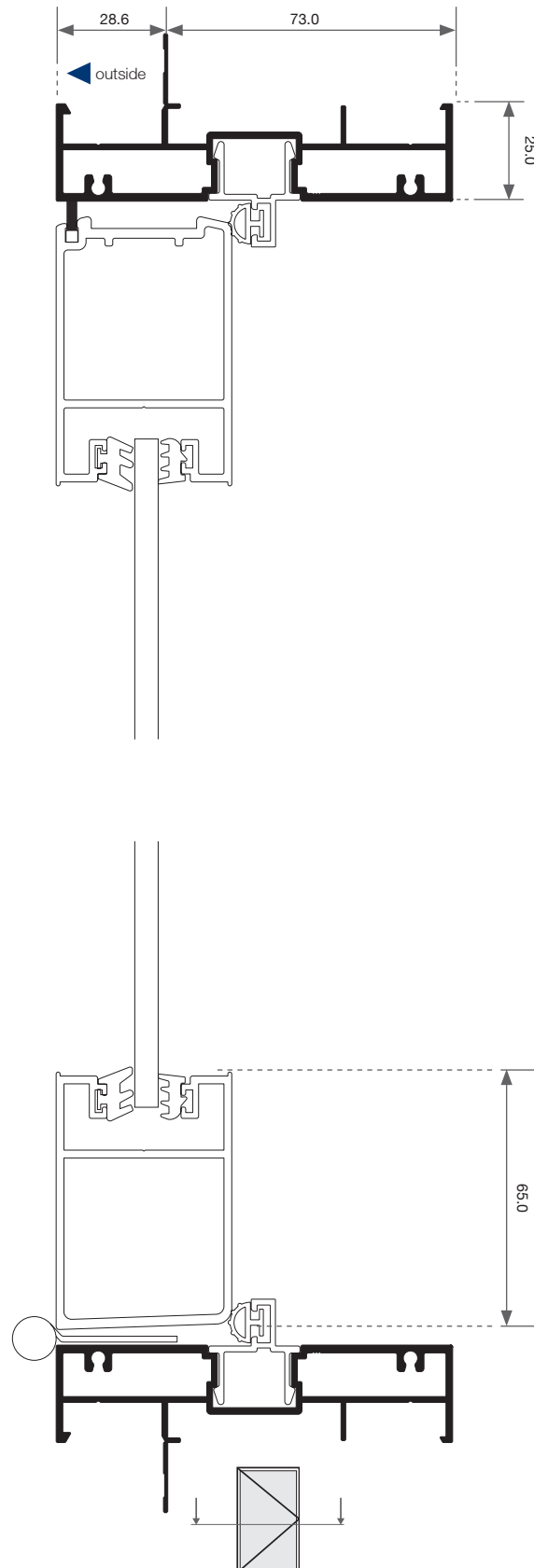
Single | Heavy Duty | Open Out | Elevation





Hinge Door - Cross Sectional View

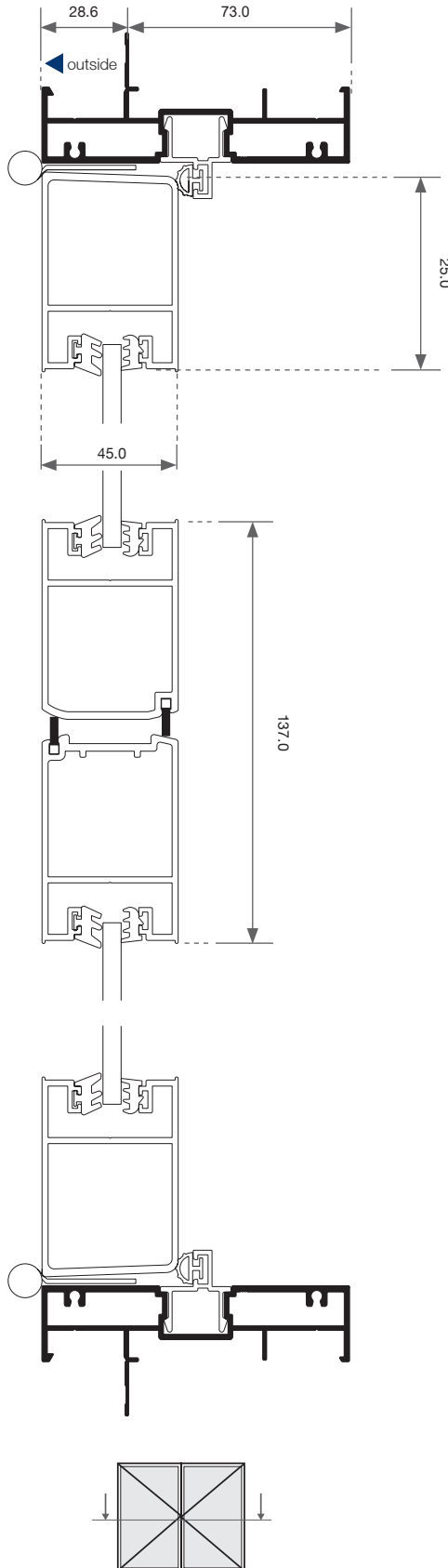
Single | Heavy Duty | Open Out | Plan



Please note that drawings displayed are not to scale

Hinge Door

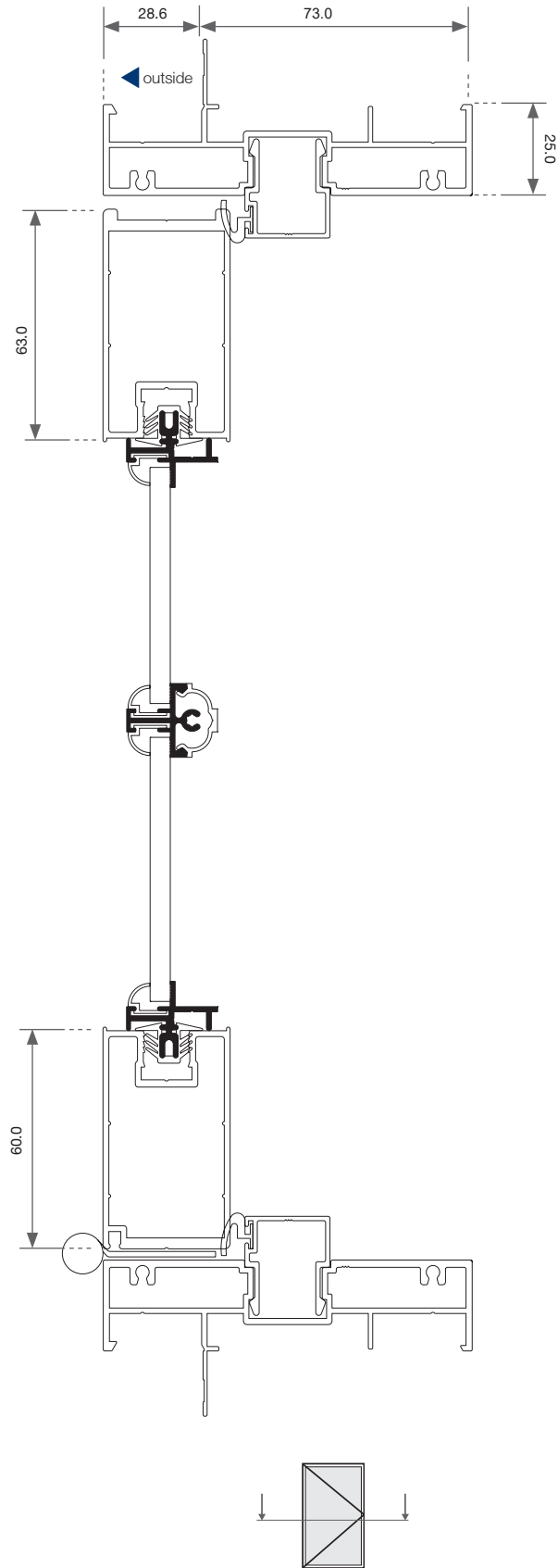
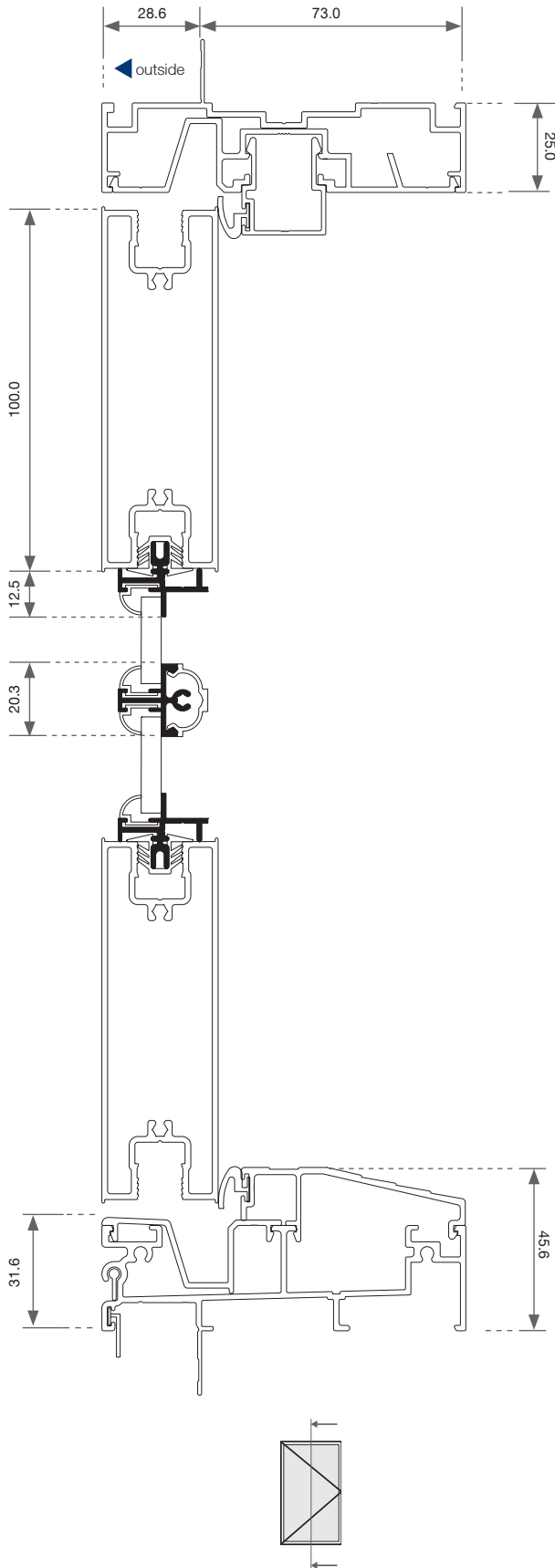
Pair | Heavy Duty | Open Out





Cross Sectional View

Cross Sectional Views | **Single | Ovolo**



Please note that drawings displayed are not to scale