

Crestlite® 650 Overlap Awning Window Features & Benefits

650 Overlap Awning Window - Features & Benefits

650 Overlap Awning Window - Features & Benefits

FRAME

- Robust semi commercial aluminium window frame - ideal for larger fixed lite applications.
- Overall frame profile measures is 50mm x 102mm.
- Frames can be glazed internally or externally - must be specified at time of order.
- Frame can be glazed with top or bottom bead.
- Commercial look for developments, apartments, units or high end residential projects.

SASH

- 38mm profile awning sash incorporates a flush double sealing system on the frame.
- Sash overlaps the exterior frame - increases performance and sealing.
- Large single lite windows are available.

GLAZING & ENERGY EFFICIENCY

- All Trend® Windows and Doors comply with AS1288, AS/NZS4666, AS/NZS1170 and AS/NZS1664.
- Frame contains deep pockets allowing for greater overlapping strength of glass.
- Clean glazing line to exterior aspect.
- Glazing options from 6mm to 24mm insulated glazed unit (IGU).
- Secure captive wedge used for glazing frames.
- Energy efficiency options available to help reduce energy consumption.
- All glazing options are Window Energy Rating Scheme (WERS) rated - providing a wide range of energy efficient solutions.

ACOUSTICS

- Acoustic solutions available for improved noise reduction.
- High R_w ratings or STC ratings available.

FRAME ADAPTABILITY

- Crestlite® hinge door, pivot door and awning sash inserts are designed to be adapted to this frame.



WIND & WATER RATINGS

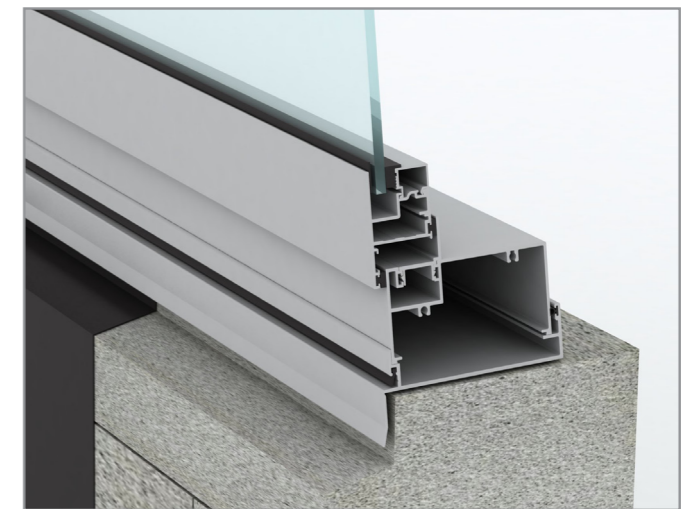
- All Trend® Windows and Doors are designed to meet and surpass 700Pa wind velocity rating and 150Pa water penetration rating and comply with AS2047.
- Pascal deflection rates up to 2200Pa.
- Front glazed commercial suite contains a concealed drainage hole for high water ratings as well as additional front screw holes for stronger frame fixing for higher wind load areas.
- Overlap awning window rated at an air infiltration of 0.4L/s m² (below the the National Construction Code (NCC) for Air conditioned spaces of 1.00L/s m²) perfect for both air conditioned and non-air conditioned spaces.

HARDWARE

- Key lock is supplied as standard.
- **Infinity** black hardware is supplied as standard.
- Optional colours available
 - Pearl White
 - Stone Beige
 - Anodic Natural Matt
 - Satin Chrome
- Window locks can be keyed alike to other Trend® products for ease of use.
- Restricted openings are also standard for high rise situations.

FINISHES

- Wide range of powdercoat finishes are available (including warranty powders and anodised options).



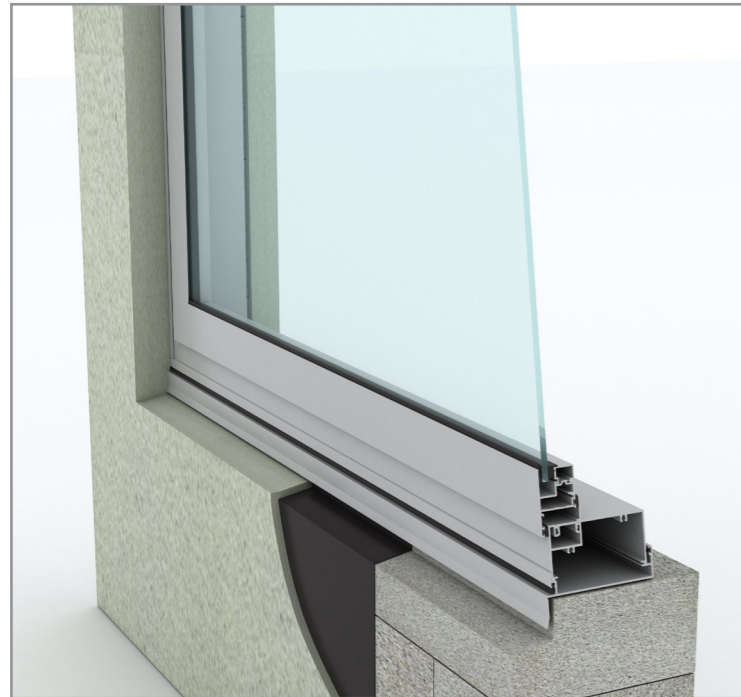
Note: To obtain maximum rating detail contact your nearest Trend Architectural Consultant.



Crestlite® 650 Overlap Awning Window Installation

650 Overlap Awning Window - Installation

Building In Detail | **Blockwork**



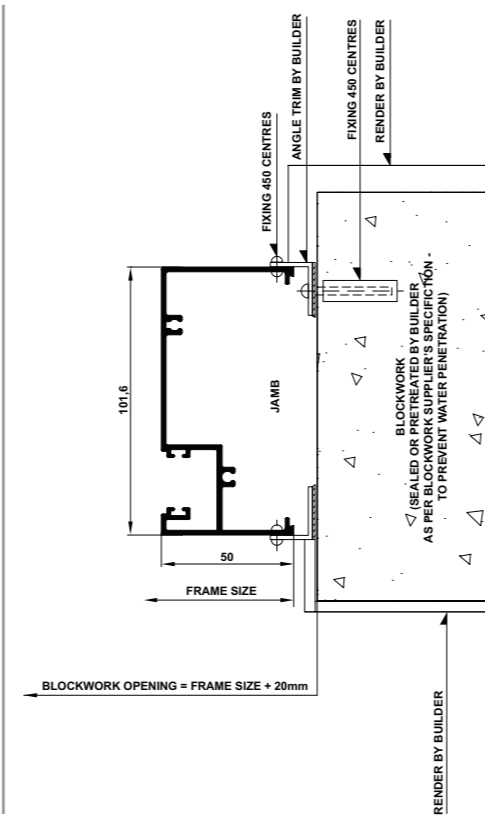
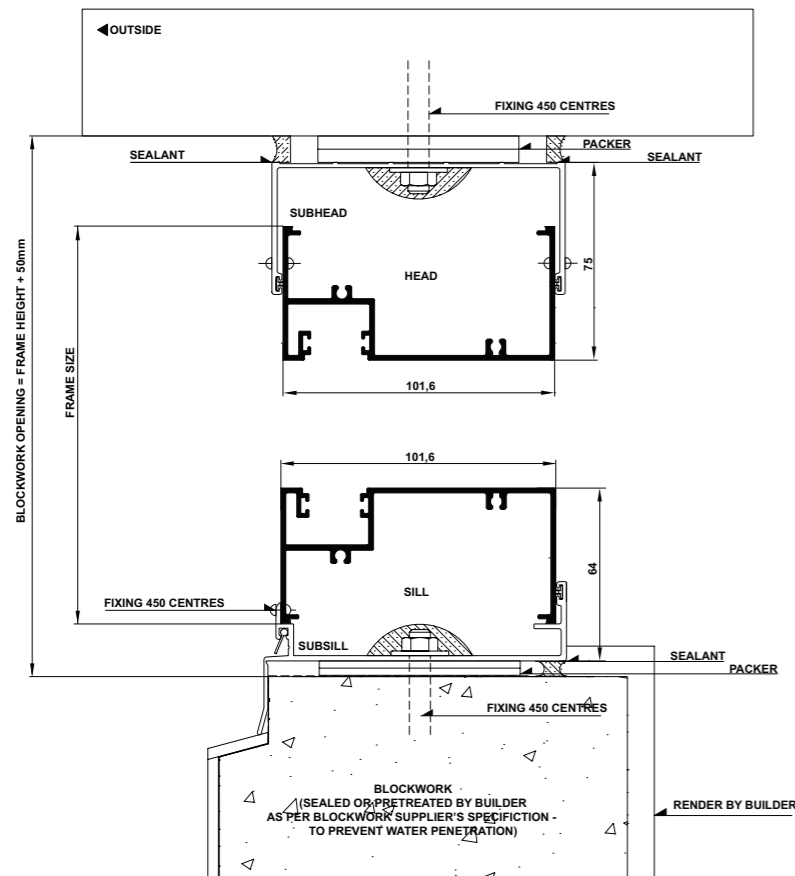
INSTALLING FRAME CORRECTLY

- Fit flashing to window surround (refer to drawing below).
- Measure the frame opening to ensure that there is sufficient room for the product and additional packing.

Blockwork Opening:

Height = Frame Size + 50mm
Width = Frame Size + 20mm

- Header beam should be at least 12mm clear of window frame.
- Do not permit weight of eaves or arch bars to bear on any window or door frame. **(Windows and doors are not load bearing.)**
- To ensure the satisfactory long term performance of windows, sill must be fully supported.
- Ensure outside finish does not block sill drainage holes.





Crestlite® 650 Overlap Awning Window

Cross Sectional Views

650 Overlap Awning Window - Cross Sectional View

650 Overlap Awning Window - Cross Sectional View

Single Lite

Two Lite with Lowlite

