

## Crestlite® 650 Inline Awning Window Features & Benefits



## 650 Inline Awning Window - Features & Benefits

## 650 Inline Awning Window - Features & Benefits

### FRAME

- Robust semi commercial aluminium window frame - ideal for larger fixed lite applications.
- Overall frame profile measures is 50mm x 102mm.
- Frames can be glazed internally.
- Frame can be glazed with top or bottom bead.
- Commercial look for developments, apartments, units or high end residential projects.

### SASH

- 38mm awning sash incorporates a flush double sealing system on the frame to improve weathering performance.
- The sash is flush to the frame giving clean lines to the overall appearance.
- Awning is available in front pocket framing section adaptable with centre pocket framing.

### GLAZING & ENERGY EFFICIENCY

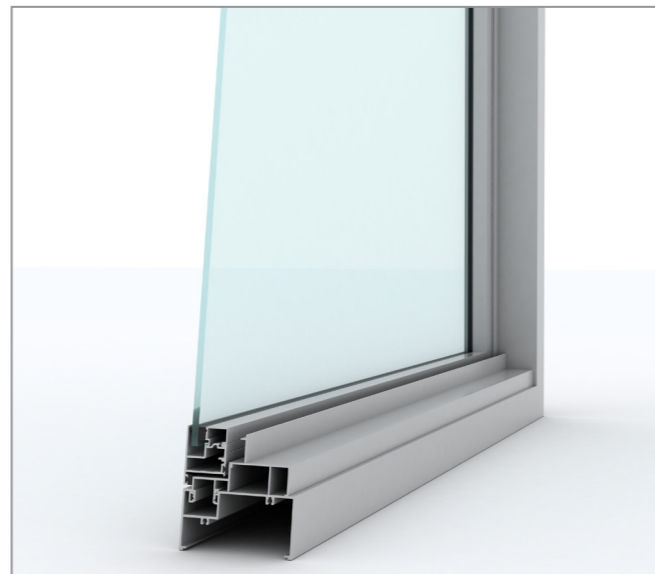
- All Trend® Windows and Doors comply with AS1288, AS/NZS4666, AS/NZS1170 and AS/NZS1664.
- Frame contains deep pockets allowing for greater overlapping strength of glass.
- Clean glazing line to exterior aspect.
- Glazing options from 6mm to 24mm insulated glazed unit (IGU).
- Secure captive wedge used for glazing frames.
- Energy efficiency options available to help reduce energy consumption.
- All glazing options are Window Energy Rating Scheme (WERS) rated - providing a wide range of energy efficient solutions.

### ACOUSTICS

- Acoustic solutions available for improved noise reduction.
- High  $R_w$  ratings or STC ratings available.

### HARDWARE

- Key lock is supplied as standard.
- **Infinity** black hardware is supplied as standard.
- Optional colours available
  - Pearl White
  - Stone Beige
  - Anodic Natural Matt
  - Satin Chrome
- Window locks can be keyed alike to other Trend® products for ease of use.
- Restricted openings are also standard for high rise situations.



Note: To obtain maximum rating detail contact your nearest Trend Architectural Consultant.

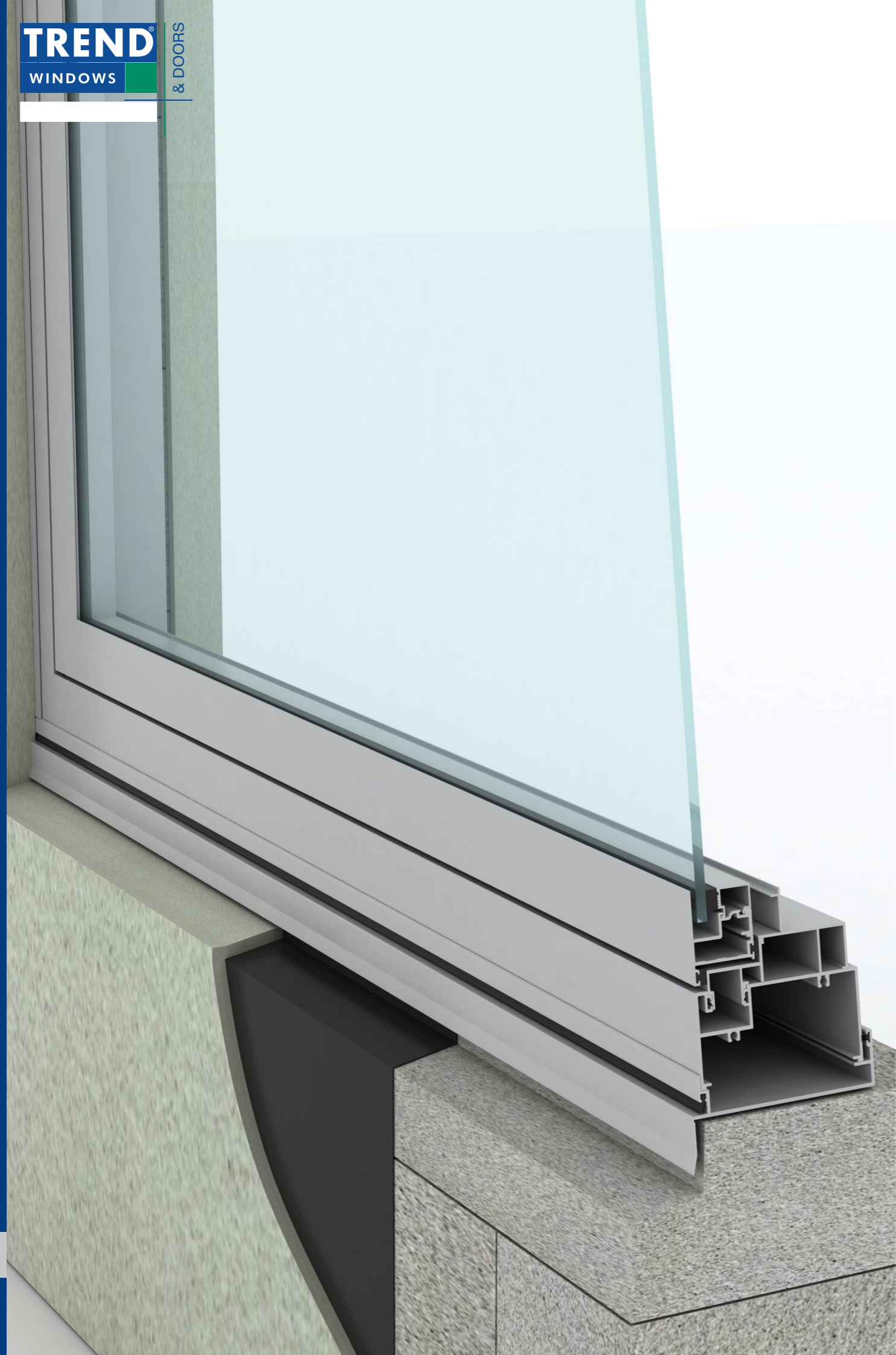
### WIND & WATER RATINGS

- All Trend® Windows and Doors are designed to meet and surpass 700Pa wind velocity rating and 150Pa water penetration rating and comply with AS2047.
- Pascal deflection rates up to 2200Pa.
- Front glazed commercial suite contains a concealed drainage hole for high water ratings as well as additional front screw holes for stronger frame fixing for higher wind load areas.
- Inline awning window rated at an air infiltration of 0.4L/s m<sup>2</sup> (below the the National Construction Code (NCC) for Air conditioned spaces of 1.00L/s m<sup>2</sup>) perfect for both air conditioned and non-air conditioned spaces.

### FINISHES

- Wide range of powdercoat finishes are available (including warranty powders and anodised options).

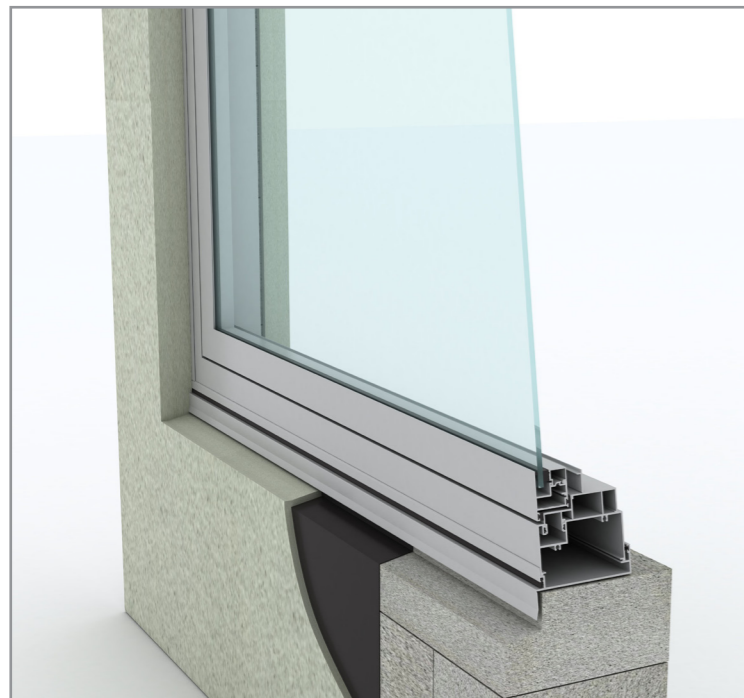




## Crestlite® 650 Inline Awning Window Installation

# 650 Inline Awning Window - Installation

Building In Detail | **Blockwork**

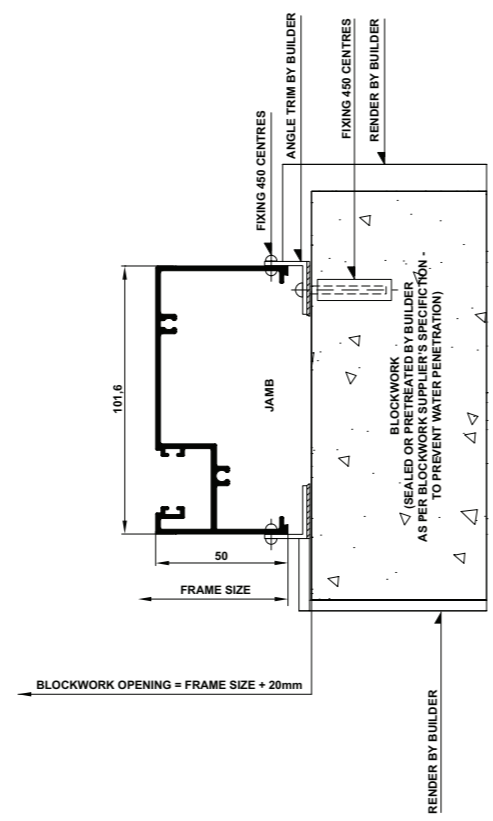
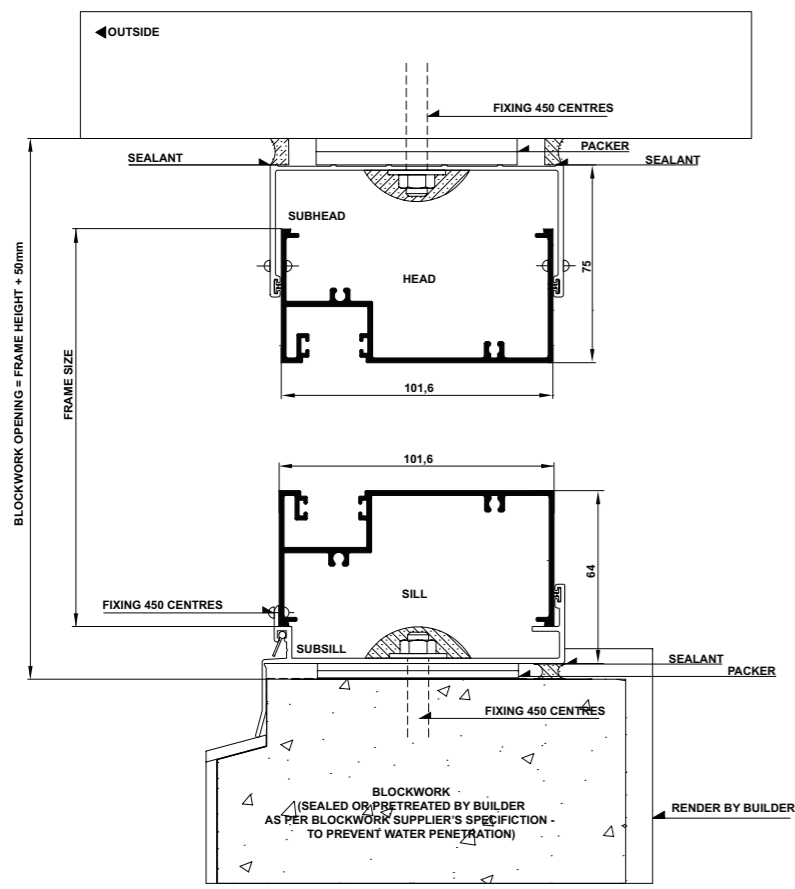


## INSTALLING FRAME CORRECTLY

- Measure the frame opening to ensure that there is sufficient room for the product and additional packing.

**Blockwork Opening:**  
Height = Frame Height + 50mm  
Width = Frame Size + 20mm

- Header beam should be at least 12mm clear of window frame.
- Fit subframe to opening and seal fixings.
- Fit window to subframe (screw or pop-rivet).
- Do not permit weight of eaves or arch bars to bear on any window or door frame. **(Windows and doors are not load bearing.)**
- To ensure the satisfactory long term performance of doors, sill must be fully supported.
- Ensure outside finish does not block sill drainage holes.





---

## Crestlite® 650 Inline Awning **Cross Sectional Views**

## 650 Inline Awning Window - Cross Sectional Views

## 650 Inline Awning Window - Cross Sectional Views

Single Lite

Two Lite

