

Crestlite® 300 Centre Glazed Features & Benefits



300 Centre Glazed - Features & Benefits

FRAME

- Robust commercial aluminium window frame - ideal for larger fixed lite applications.
- Overall frame profile measures 45mm x 102mm.
- Frames can be glazed from inside or outside - must be specified on order.
- Commercial look for apartments, units or high end residential projects.

SILL

- Modern sill provides a clean appearance from the inside and the outside.

GLAZING & ENERGY EFFICIENCY

- All Trend® Windows and Doors comply with AS1288, AS/NZS4666, AS/NZS1170 and AS/NZS1664.
- Frame contains deep pockets allowing for greater overlapping strength of glass.
- Glazing options from 5mm to 12.38mm thickness.
- Secure captive wedge used for glazing frames.
- Maximum single fixed lite panel is up to 8 sqm each.
- Maximum multiple fixed lite panels is up to 6 sqm each.
- Energy efficiency options available to help reduce energy consumption.
- All glazing options are Window Energy Rating Scheme (WERS) rated - providing a wide range of energy efficient solutions.

FRAME ADAPTABILITY

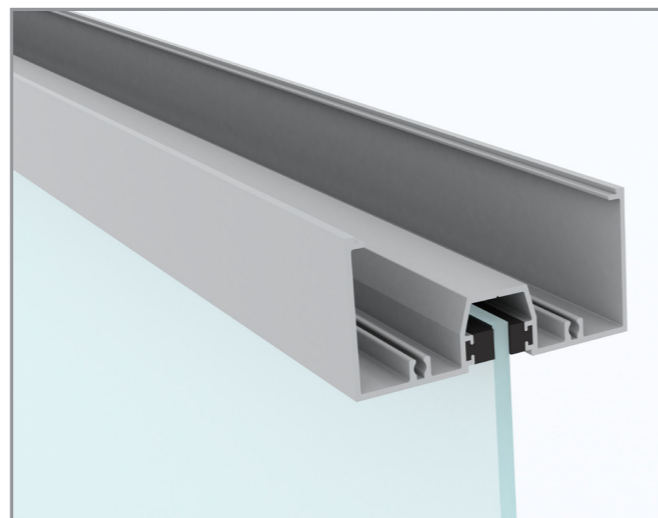
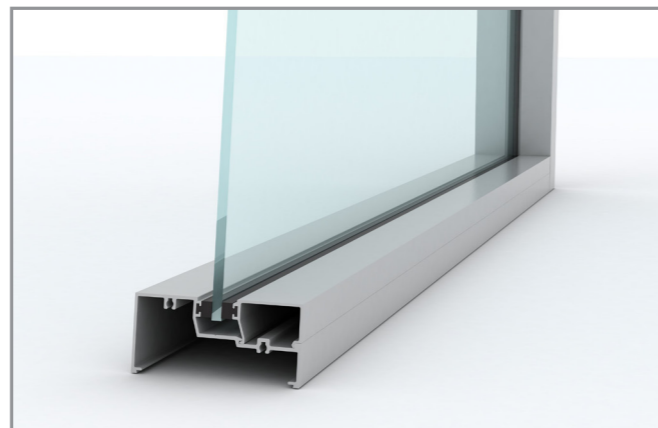
- Crestlite® hinge door, pivot door and awning sash inserts are designed to be adapted to this frame.

WIND & WATER RATINGS

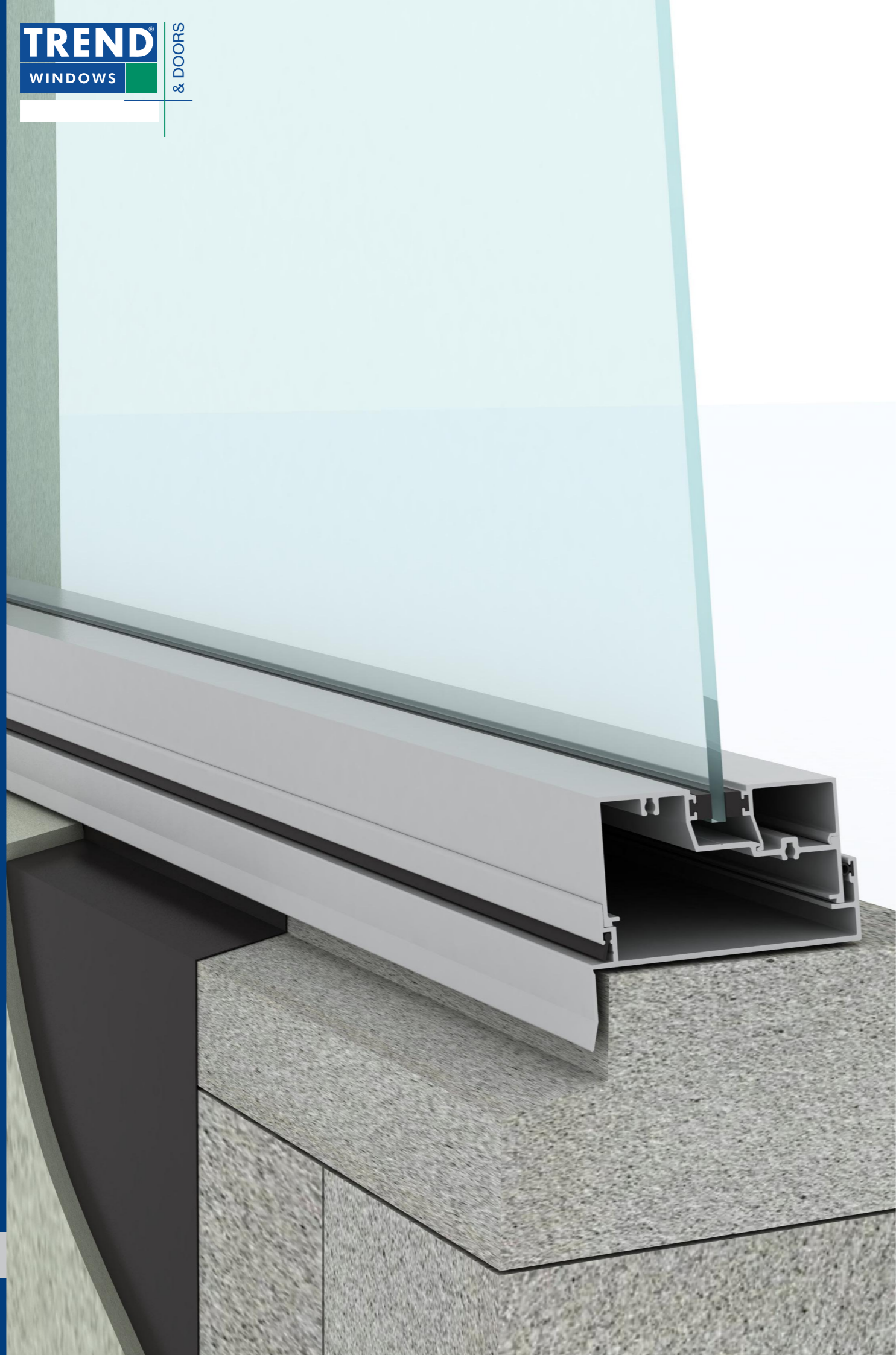
- All Trend® Windows and Doors are designed to meet and surpass 700Pa wind velocity rating and 150Pa water penetration rating and comply with AS2047.
- Pascal deflection rates up to 2200Pa.
- Centre glazed is rated at an air infiltration of 0.84L/s m² (below the the National Construction Code (NCC) for Air conditioned spaces of 1.00L/s m²) perfect for both air conditioned and non-air conditioned spaces.

FINISHES

- Wide range of powdercoat finishes are available (including warranty powders and anodised options).



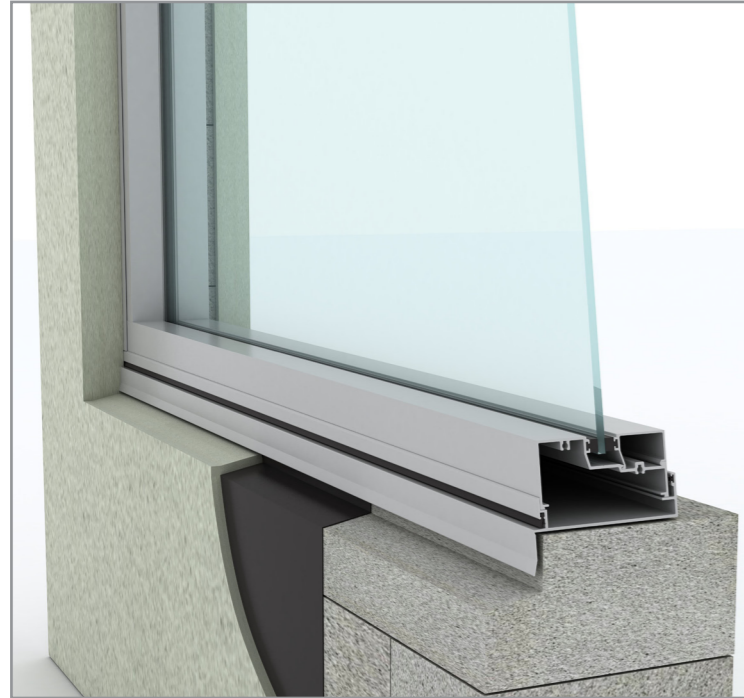
Note: To obtain maximum rating detail contact your nearest Trend Architectural Consultant.



Crestlite® 300 Centre Glazed Installation

300 Centre Glazed - Installation

Building In Detail | **Blockwork**



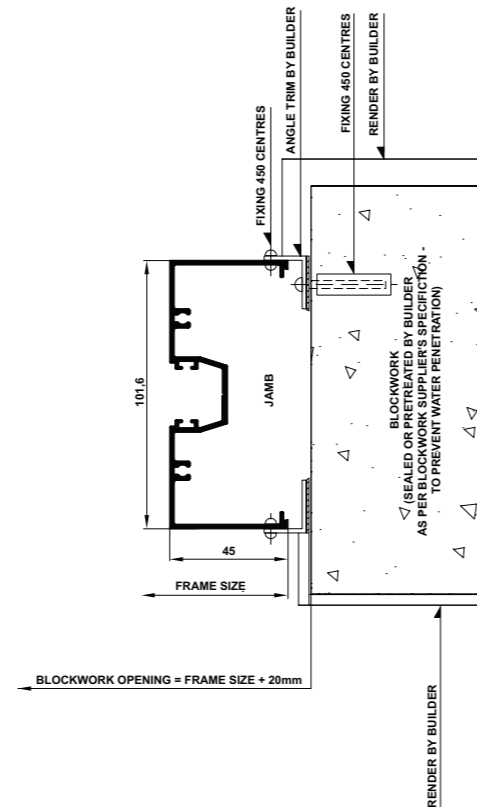
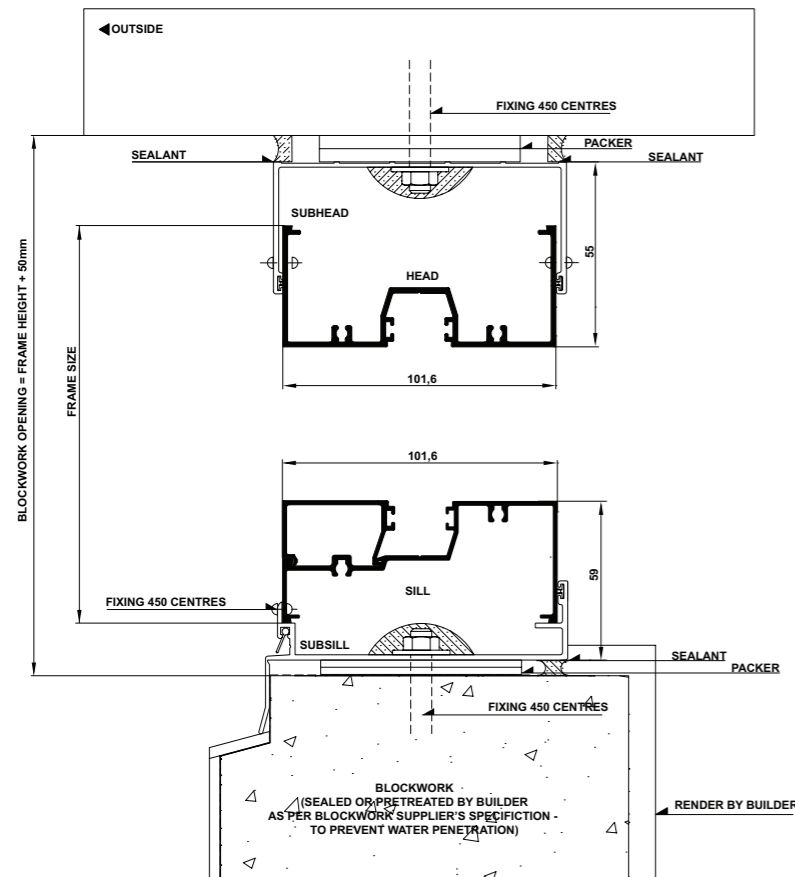
INSTALLING FRAME CORRECTLY

- Measure the frame opening to ensure that there is sufficient room for the product and additional packing.

Blockwork Opening:

Height = Frame Size + 50mm
Width = Frame Size + 20mm

- Header beam should be at least 12mm clear of window frame.
- Fit subframe to opening and seal fixings.
- Seal ends of subsill with angle.
- Fit window to subframe (screw or pop-rievet).
- Do not permit weight of eaves or arch bars to bear on any window or door frame. **(Windows and doors are not load bearing.)**



Crestlite® 300 Centre Glazed Cross Sectional Views



300 Centre Glazed - Cross Sectional View

300 Centre Glazed - Cross Sectional View

Single Lite

Two Lite with Lowlite

